



**Bobcat**®

## Articulating Tractor

AT450



***One Tough  
Animal***®



# GO OVER, AROUND AND THROUGH JUST ABOUT ANYTHING.

Introducing the all-new Bobcat® AT450 articulating tractor. With stable maneuverability and uncompromising versatility, this tractor is designed to tackle an endless barrage of to-do's. Its revolutionary articulating, oscillating frame provides superior stability that can take you just about anywhere. From its unsurpassed ability to climb and maneuver in super-tight spaces to its long list of versatile attachments, the new Bobcat AT450 dominates wherever it goes and whatever you ask of it.

## **EASILY NAVIGATE ROLLING AND ROUGH TERRAIN AND SLOPES.**

A wide-stance oscillating frame and adjustable, on-the-fly hydraulic weight transfer keep you moving productively.

## **POWER THROUGH TOUGH GROUND AND DIFFICULT TASKS.**

Two engine options (25-horsepower diesel or 32-horsepower gas) deliver with power to spare.

## **GET YEAR-ROUND VERSATILITY.**

Do it all, from hauling material to maintaining acres of turf or tackling the deepest snow. With the standard front hitch system, changing attachments is quick and easy.





AT450 Gas  
Attachment: Rough Cut Mower



## PERFORMANCE

AT450 Diesel  
Attachment: Bucket

# ALL-AROUND PERFORMANCE

The Bobcat AT450's articulating and oscillating frame helps keep all four wheels in contact with the ground – even on rough, uneven terrain that makes attachment operation difficult for many other machines. So whatever task is at hand – mowing, plowing, landscaping, digging, lifting – its uncompromising power and versatility make this powerhouse the ONE machine that can **conquer any challenge.**





## **ARTICULATING AND OSCILLATING FRAME**

The articulating, oscillating frame allows for a tight turning radius, plus it keeps all four wheels grounded so operators can confidently take on uneven terrain and slopes as steep as 30 degrees with the dual wheel kit attached. The tractor's articulated joint provides tighter turns and significantly more maneuverability compared to traditional compact tractors.

## **FOUR-WHEEL DRIVE**

Four-wheel drive delivers exceptional traction for scaling steep berms and slopes or powering through soft, slippery or uneven terrain.

## **INCREASED STABILITY**

With an articulating and oscillating frame, four-wheel drive, and low center of gravity, the AT450 delivers increased stability and traction on many types of terrain and in different types of conditions.

## **FRONT-END ATTACHMENT ADVANTAGE**

Front-mount attachments complete the work before the articulating tractor's tires pass over the work area. The result is a clean finish, without the tires compacting snow before it can be blown or flattening grass before it can be cut.

## **POWERFUL ENGINE**

The AT450 features a liquid-cooled 25-horsepower Kubota® D902 diesel or 32-horsepower WG972 gas engine that produces generous power for PTO and hydraulically driven attachments. Mow large acreages at speeds up to 9 mph, then quickly switch to the turbine blower attachment for a professional clippings cleanup.

## **STRONG, DRIVING PTO**

This articulating tractor's PTO directs ample power to front-end attachments, using an adjustable cog belt system that is also designed for easy attachment changes.

## **MINIMAL GROUND DISTURBANCE**

With its light overall footprint, the AT450 minimizes ground compaction as well as cuts and tears in the turf.

## **WHEEL SPACER KIT**

The optional wheel spacer kit permits the original wheels to extend outward 3 inches, allowing the tractor to safely take on 25-degree slopes.

## **DUAL WHEEL KIT**

Add an additional four wheels to the AT450 for even greater traction and stability. You'll also spread the tractor's footprint across a wider area and protect the turf with lower ground pressure.

## **TACKLE UNEVEN TURNS**

Four independent 21-inch decks with powerful torque allow the Flex Deck Mower to deliver a high quality, professional cut on uneven, sloped terrain – pushing productivity to all-new heights and angles.

**30° SLOPES**



*AT450 Gas  
Attachment: AirFx Mower*



**COMFORT**

# MAKE WORKING MORE COMFORTABLE.

Why not make work a little more pleasant? Spacious legroom, an adjustable suspension seat and standard foot pegs provide operators with all-day comfort and support. With so many added features that make operating the AT450 easier for you, hard work may not feel quite so hard.

## **COMFORTABLE SUSPENSION SEAT**

The optional adjustable suspension seat provides all-day ride comfort.

## **EXCELLENT VISIBILITY**

Bobcat designs its equipment with visibility as a top priority. From the operator's platform, you have optimal sight lines to both front attachments and rear implements.





## SMOOTH RIDE

Besides amazing stability, you'll also travel more comfortably on rough terrain and experience a ride quality that other machines can't match.

## SPACIOUS, ANTI-SLIP OPERATOR PLATFORM

The large platform provides the legroom operators want for long days of work. The platform is flat and features an anti-slip surface for enhanced comfort and control. Operators can also make use of the convenient storage bin and a 12-volt charger.

## LED WORK LIGHTS

Bright, efficient and reliable LED lights provide the visibility you need when natural light is low. LED work lights are standard equipment.

## SIMPLE, QUICK ATTACHMENT HOOKUP

The quick hitch attachment system enables operators to conveniently switch attachments in a matter of minutes, with no tools required.



AT450 Gas  
Attachment: Flail Mower



## DIGITAL DISPLAY

Monitor system voltage, engine temperature and other major functions from the easy-to-read digital display.



## FOOT PEGS

With operator comfort top of mind, standard foot pegs add comfort and support while working on rough ground.



## UPTIME & SERVICEABILITY

# BUILT TOUGH, DURABLE AND VERY RESOURCEFUL



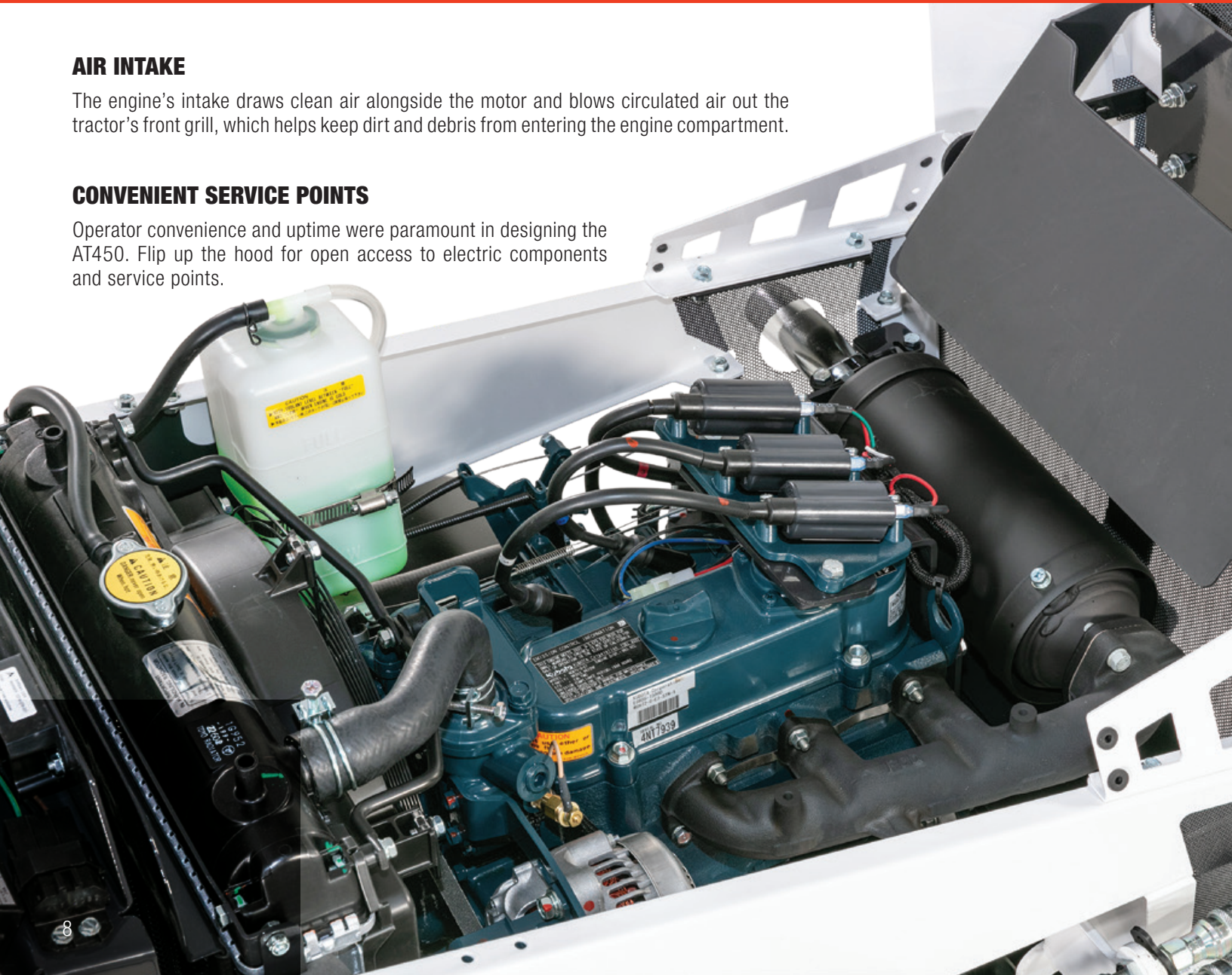
Designed to keep you moving through thick and thin, the Bobcat AT450 is rugged, dependable and built to last, allowing you to accomplish more during every season. And just as important, by keeping maintenance simple, you've got more time for other pursuits.

### AIR INTAKE

The engine's intake draws clean air alongside the motor and blows circulated air out the tractor's front grill, which helps keep dirt and debris from entering the engine compartment.

### CONVENIENT SERVICE POINTS

Operator convenience and uptime were paramount in designing the AT450. Flip up the hood for open access to electric components and service points.







### **AUXILIARY HYDRAULICS**

Conveniently located hydraulic couplers power the auxiliary functions of front-end attachments. Add additional couplers for front-mount attachments and rear-mount implements for even more versatility and productivity. An optional electric power connection is also available.



### **MORE FUEL CAPACITY**

The conveniently located 7-gallon fuel tank keeps you going longer, with fewer fill-ups.

### **PROTECTIVE SKID PLATING**

Skid plating along the underside of the frame helps protect components, enhancing the articulating tractor's durability for a long and dependable service life.

### **EASY-ACCESS BATTERY TERMINAL**

Operators have unobstructed access to the battery, which is protected from the elements in a compartment below the joystick.

### **HANDY TIE-DOWNS**

The AT450 is easy to load, transport and unload with its convenient tie-downs. Secure the machine easily, confidently and quickly.

AT450 Gas  
Attachment: Angle Broom



## VERSATILITY

# ATTACHMENTS ADD INCREDIBLE VERSATILITY.

Having the right tool for the right job can make a huge difference in productivity and efficiency. This arsenal of attachments is designed to perfectly complement the Bobcat AT450 articulating tractor and turn an already remarkable machine into a versatile powerhouse. Plus, the quick hitch attachment system enables operators to quickly and conveniently switch attachments in just minutes, with no tools required.



AT450 Gas  
Attachment: AirFX Mower

## ACCESSORIES

### UTILITY ACCESSORIES

- Bar tires
- Turf tires
- Dual wheel kits
- 3-inch wheel spacer kit
- Slope meter kit
- Backup beeper kit
- All-weather deluxe cab enclosure
- Suspension seat
- Engine overheat protection kit
- Front power outlet kit

### ALL-WEATHER DELUXE CAB ACCESSORIES

- Interior mirror
- Two-sided exterior mirror
- LED lights
- Circulating fan
- Water heater kit
- Quick disconnect heater hose kit

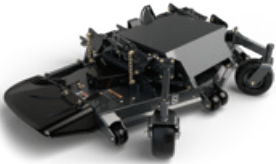


## ATTACHMENTS



### ADJUSTABLE V-BLADE ATTACHMENT

Designed to tackle formidable snowfall and outdoor tasks, the adjustable V-blade attachment features a straight cutting width of 58 inches and an overall height of 21 inches.



### AIRFX MOWER DECK ATTACHMENT

The AirFX™ mower deck is designed with a deep-deck, bullnose and patented Air-Gap baffle system, creating a vacuum that lifts grass for a superior quality of cut.



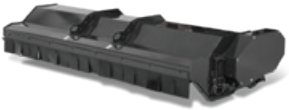
### ANGLE BROOM ATTACHMENT

The heavy-duty, uniquely waved polypropylene bristle design of the angle broom sweeps a cleaner path for driveways, sidewalks, parking lots and more.



### BUCKET ATTACHMENT

Take on landscaping, hardscaping, small excavation projects or even deep snow with the rugged and compact bucket attachment.



### FLAIL MOWER ATTACHMENT

With two different knife options – Y and scoop – the flail mower is perfect for taking on native areas or areas that demand a fine finish.



### FLEX DECK FINISH CUT MOWER ATTACHMENT

With the Bobcat flex deck, you can deliver a precision cut, even on steep slopes. With clean directional side discharge, four independent 21-inch decks and variable blade speeds, the flex deck is designed to follow any slope or contour effortlessly without scalping.



### ROUGH CUT MOWER ATTACHMENT

The rough cut mower evenly mows down tall grass and thick, woody overgrowth up to 1.5 inches in diameter. Built to clear entire fields, the rough cut mower's 72-inch cutting width lets you power through large expanses of farmland and wooded areas with ease.



### SNOWBLOWER ATTACHMENT

The commercial-grade snowblower attachment has the ability to cut a 48-inch path with its 16-inch serrated auger – it powers straight through deep snow and propels it from a powerful 140 rpm, four-blade blower.



### STRAIGHT BLADE ATTACHMENT

Power through dirt, gravel or snow with the hydraulic straight blade, built tough with a reversible cutting edge.



### TURBINE BLOWER ATTACHMENT

Turn up the horsepower on big cleanup jobs with the Bobcat turbine power blower. Capable of putting out wind speeds of up to 114 mph, its axial flow turbine is quiet but powerful – with a 360-degree rotating nozzle that makes it easy to blow leaves and debris in the direction you want.



# SPECIFICATIONS

Model	AT450 Gas	AT450 Diesel
<b>Engine</b>	Kubota WG972	Kubota D902
Max. Operating Speed	3600 rpm	3600 rpm
Fuel Type	Gas	Diesel
Gross Horsepower	32.5 hp (24.2 kW)	24.8 hp (18.4 kW)
Displacement	58.7 cu. in. (962 cc)	54.7 cu. in. (898 cc)
Cylinders	3	3
Cooling	Liquid	Liquid
Fuel Capacity	7.0 gal. (26.4 L)	7.0 gal. (26.4 L)
Charging	40 Amp	40 Amp
Battery	450 CCA	450 CCA
Max. Slope Rating, Continuous	20°	20°
Max. Slope Rating, Intermittent (10 minutes or less)	30°	30°
Weight (with Field Trac tires and fuel)	1860 lb. (843 kg)	1865 lb. (845 kg)
<b>Dimensions</b>		
Overall Width	44.5 in. (1130 mm)	44.5 in. (1130 mm)
Overall Width With Wheel Extensions	50.5 in. (1282 mm)	50.5 in. (1282 mm)
Overall Width With Dual Wheels	66.5 in. (1689 mm)	66.5 in. (1689 mm)
Overall Length With ROPS Up	80.5 in. (2044 mm)	80.5 in. (2044 mm)
Overall Height With ROPS Up	73.5 in. (1866 mm)	73.5 in. (1866 mm)
Overall Height With ROPS Folded	55.0 in. (1397 mm)	55.0 in. (1397 mm)
Wheelbase	43.5 in. (1104 mm)	43.5 in. (1104 mm)
Minimum Ground Clearance	4.7 in. (119 mm)	4.7 in. (119 mm)
Frame Oscillation	9.0 in. (228 mm)	9.0 in. (228 mm)
Turning Radius	43.5 in. (1104 mm)	43.5 in. (1104 mm)
<b>Hydraulics</b>		
Implement Pump	Turola Group 2 Series Fixed-Displacement, Stacked Configuration	Turola Group 2 Series Fixed-Displacement, Stacked Configuration
Flow Capacity	6.0 gpm (22.7 L/min.) @ 3600 rpm	6.0 gpm (22.7 L/min.) @ 3600 rpm
Lift, Steering, Auxiliary Pressure	1750 psi (12.0 MPa)	1750 psi (12.0 MPa)
Hydraulic Oil Capacity	5.2 gal. (19.6 L)	5.2 gal. (19.6 L)
<b>Transmission</b>		
Hydrostatic Drive Pump	Eaton® Model 70160, Variable-Displacement Piston Pump	Eaton® Model 70160, Variable-Displacement Piston Pump
Transaxles	(2) Peerless® 2600 Dual-Range	(2) Peerless® 2600 Dual-Range
Speed – High Range (forward/reverse)	9.5 mph (15.2 km/hr.) / 7.0 mph (11.2 km/hr.)	9.5 mph (15.2 km/hr.) / 7.0 mph (11.2 km/hr.)
Speed – Low Range (forward/reverse)	6.0 mph (9.6 km/hr.) / 4.5 mph (7.2 km/hr.)	6.0 mph (9.6 km/hr.) / 4.5 mph (7.2 km/hr.)
Steering	Hydraulic Power Steering	Hydraulic Power Steering
Brakes	Single, Mechanical Disc	Single, Mechanical Disc
<b>Attachment Drive</b>		
Front PTO Clutch	Warner® CMS 250 Series Electric Clutch/Brake	Warner® CMS 250 Series Electric Clutch/Brake
Hydraulic Outlets	Quick Couplers – Front	Quick Couplers – Front
<b>Tires</b>		
Field Trac	22x12-10	22x12-10
Bar	22x12-10	22x12-10
Turf	22x11-10	22x11-10
<b>Hitch</b>		
Front	Quick-Hitch System	Quick-Hitch System
Back	2 in. Receiver Hitch (Category 1 3-point hitch opt.)	2 in. Receiver Hitch (Category 1 3-point hitch opt.)





Model	AT450 Gas	AT450 Diesel
<b>High-Back Bucket Seat</b>	Deluxe, High-Back Bucket Seat With Armrests and Rear Storage Pouch	Deluxe, High-Back Bucket Seat With Armrests and Rear Storage Pouch
Adjustment	6 in. Fore and Aft	6 in. Fore and Aft
<b>Features</b>		
Dual LED Headlights and Taillights	Std	Std
Storage Compartment	Std	Std
Cup Holder	Std	Std
Front and Rear Skid Plates	Std	Std
Manual PTO Tension Adjustment	Std	Std
Fold-Down ROPS (roll-over protective structure)	Std	Std
12-Volt Outlet (15 amp)	Std	Std
Front Fender Kit	Opt	Opt
Engine Overheat Protection Kit	–	Std





# One Tough



## B O B C A T T I M E L I N E



Compact Wheel Loaders

1958



Skid-Steer Loaders

1960



Bob-Tach Mounting System

1970



Compact Excavators

1986



Compact Track Loaders

1999



Mini Track Loaders

2001



Toolcat Utility Work Machines

2003



First Utility Vehicle with RapidLink

2006

50

Years

2008



M-Series Compact Excavators & Loaders

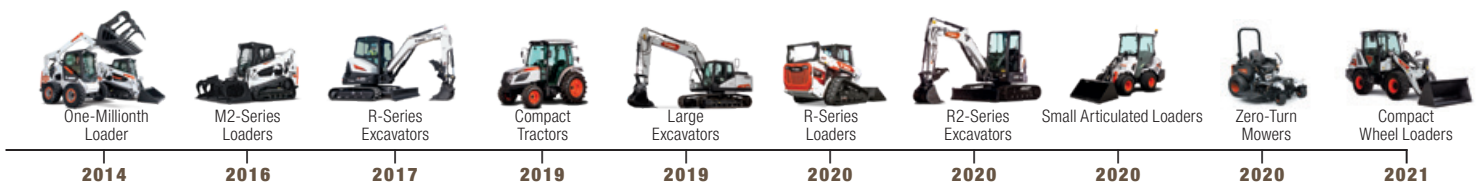
2009



# h Animal<sup>®</sup>



AT450 Gas  
Attachment: Rough Cut Mower







# YOU ARE ONE TOUGH ANIMAL.®

Everything we put into Bobcat equipment is designed to make more of whatever you bring to the job. Whether it's strength, versatility, speed or agility, it's built around you.

Certain specification(s) are based on engineering calculations and are not actual measurements. Specification(s) are provided for comparison purposes only and are subject to change without notice. Specification(s) for your individual Bobcat equipment will vary based on normal variations in design, manufacturing, operating conditions, and other factors. Where applicable, dimensions are in accordance with ISO standards. Specifications and design are subject to change without notice. Pictures of Bobcat units may show other than standard equipment. All dimensions are given for small articulated loaders with standard tires. All dimensions are shown in inches. Respective metric dimensions are enclosed by parentheses. Bobcat Company complies with the requirements of ISO 9001 as registered with BSI.

**DOOSAN**

**Bobcat Company is a member of the Doosan Group.** Doosan is a global leader in construction, grounds maintenance and material handling equipment, power and water solutions, and engineering that has proudly served customers and communities for more than a century. Bobcat®, the Bobcat logo and the colors of the Bobcat machine are registered trademarks of Bobcat Company in the United States and various other countries. ©2023 Bobcat Company. All rights reserved.



Printed on 10% recycled paper

**B-3050 (12/23)**  
EP-10M-1223-6598-F

**Bobcat Company**  
250 East Beaton Drive • West Fargo, ND 58078

**Bobcat.com**



**Bobcat®**

***One Tough Animal.***