



BOBCATALOG

20
24

CONTENTS

New Innovations	4
Electric Loaders and Excavators	6
Digital Products	8
Compact Loaders	12
Excavators	22
Compact Wheel Loaders	34
Telehandlers	38
Light Compaction	40
Material Handling, Industrial Air and Portable Power	42
Parts and Service	44
Zero-Turn Mowers	48
Turf Renovation	54
Compact Tractors	56
Articulating Tractors	61
Utility Vehicles	62
Toolcat Utility Work Machines	64
Mini Track Loaders	66
Small Articulated Loaders	68
Attachments	70
Equipment Specifications	106

LOOK FOR THESE ICONS HIGHLIGHTING NEW PRODUCTS IN 2024 AND EXCLUSIVE FEATURES UNIQUE TO BOBCAT EQUIPMENT.



NEW PRODUCT



EXCLUSIVE



HEAVY-DUTY INFORMATION YOU CAN USE

Sign up today for Bobcat emails and receive updates on the latest products, special offers, tips for getting the most out of your machine, warranty reminders and more.





*RogueX Compact Track
Loader Concept*

DESIGN TO DOMINATE

ALL-ELECTRIC AUTONOMOUS COMPACT LOADER CONCEPTS

ROGUEX AND ROGUEX2

It's a masterwork in the art of possibilities. Bobcat® RogueX is an exciting compact track loader concept designed from the start without an operator station for remote operation and the automation of tasks. Its powerful combination of all-electric innovation and advanced kinematics delivers radius- and vertical-path lift capabilities in one machine.

Set to be revealed in early 2024, the RogueX2, a skid-steer loader concept, is the latest example of all-electric and autonomous innovation from Bobcat. Its aggressive, forward-leaning stance conveys its fierce power and performance. The angular lines, bold shapes and sculpted forms showcase the machine's strength, agility and confidence.



*RogueX2 Skid-Steer
Loader Concept*



SCAN TO LEARN MORE
ABOUT BOBCAT INNOVATIONS.





LEARN MORE AND SIGN UP FOR
PRODUCT AVAILABILITY UPDATES.



LEADING THE CHARGE

BOBCAT BRINGS ELECTRIC INNOVATION TO THE EQUIPMENT INDUSTRY.

At Bobcat, we're leading the electric equipment charge and reinventing how work gets done. By bringing heavy-duty electrification to new frontiers, the next generation of groundbreakers will find an alternative power solution that makes a productive difference and unleashes greater accomplishments.



ALL-ELECTRIC COMPACT LOADERS

T7X AND S7X

The Bobcat electric loader lineup includes the award-winning Bobcat T7X – the world's first all-electric compact track loader – and the Bobcat S7X all-electric skid-steer loader. Bobcat is revolutionizing power delivery by eliminating all hydraulics on the machine and replacing them with heavy-duty linear actuators. The T7X and S7X can save up to 95% of monthly maintenance and fueling expenses compared to their diesel-equivalent loaders.

With zero emissions, all-electric loaders work quietly and efficiently in sensitive urban environments that may have ESG requirements. Our all-electric compact loaders provide a familiar environment for any Bobcat equipment operator, with controls and instrumentation that are consistent with their diesel-powered counterparts.

BATTERY-ELECTRIC COMPACT EXCAVATORS

E10e, E19e AND E32e

With quick charging, long runtimes, plus impressive power and torque, the battery-electric Bobcat compact excavators take the labor-saving power of Bobcat equipment wherever the work is – including indoor jobsites and areas with noise restrictions.

Both the E10e and E19e support a 12-hour on-board charge time as well as a 1-2-hour off-board charge time.

CRITICS ARE CHARGED UP.

Continuing our legacy, Bobcat is recognized globally for our pioneering approach to electric equipment.

- Fast Company's World Changing Ideas: Transportation
- Compact Equipment's Innovative Iron Awards
- Contractors' Top New Products Award
- CES 2022 Innovation Award
- Construction Equipment's Top 100 Products of 2022
- Choice Awards 2022



HARNESS YOUR HORSEPOWER.

Revolutionary digital products for your Bobcat compact equipment give you ways to enhance your experience on the jobsite.



Bobcat® MAXCONTROL

Increase your efficiency when help is limited. Control your Bobcat loader using an app on your iOS smartphone and avoid repeated trips in and out of the cab. You can command machine functions and attachments from outside the cab – up to 300 feet away.

— NOTE: Not approved for certain types of hazardous or explosive environments.



LEARN MORE ABOUT MAXCONTROL REMOTE OPERATION.

Bobcat®

FEATURES ON DEMAND

Add additional features to your compact track or skid-steer loader with Features On Demand. Available on select models.



LEARN MORE ABOUT FEATURES ON DEMAND.

— See page 16 for more info.

Bobcat® MACHINE IQ[®]

Stay in the driver's seat of your fleet with the ability to track information and machine health from virtually anywhere on any device.

Optimize performance.

- Check operating hours and fuel levels
- Access fleet utilization reporting*

Maximize uptime.

- Receive maintenance reminder email alerts with instructions and parts*
- Track maintenance intervals
- Get fault code notifications and troubleshooting guidance*

Enhance security.

- Create geofences and curfews with breach notifications*
- Get motion detection notifications*
- Access GPS location and history

*Available through Machine IQ Health and Security subscription.



LEARN MORE ABOUT MACHINE IQ.

MACHINE IQ: AS ESSENTIAL AS WORK BOOTS

Factory-Installed

Select Bobcat machines are standard equipped with Machine IQ and come with a Machine IQ Basics trial subscription.

- Loaders (R-Series):
T/S62, T/S64, T/S66, T/S76, T/S86
- Loaders (M3-Series):
T770 (Comfort and Deluxe packages)
- Compact Excavators:
E26, E32, E35, E38, E40, E48, E55, E60, E88



Machine: S64
Attachment: Pallet Fork

Connectable Equipment

Other Bobcat machines are compatible with Machine IQ by connecting with an aftermarket kit. These models include additional loaders and excavators as well as small articulated loaders and Toolcat™ utility work machines.



FOR BRANDON TRIMBORN, BOBCAT TECHNOLOGY IS A LIFE-CHANGER.



When a school volunteer at Brandon Trimborn's high school needed someone with an auger attachment to dig holes required for moving a solar panel, Brandon's dad and business owner, Tim, did the job for free. This led to work with a solar company in Santa Fe, New Mexico, and Triple T Excavating, whose prior focus was building foundations, entered the solar energy business.

The versatility and durability of Bobcat equipment made it easy to adapt to a new and growing industry and lay the groundwork for Santa Fe's solar evolution. As Bobcat customers for more than two decades, Triple T owns an impressive lineup of Bobcat equipment that includes three excavators, two skid-steer loaders, one compact track loader and a wide assortment of attachments from buckets to forks, grapples, augers, a trencher, a grader and more.

When an ATV accident left Brandon paralyzed from the chest down, he worried about his ability to continue operating heavy equipment – a job that was in his blood. Working closely with his local Bobcat dealer, Brandon enlisted MaxControl remote operation. Now he can operate his machine with his phone – and he remains actively engaged in the family business, working with the heavy machinery he loves.

The game-changing, innovative technology from Bobcat has made a life-changing impact for Brandon and Triple T Excavating as they drive solar energy growth across the Southwest.



"I hope Bobcat keeps doing what they're doing, because they're definitely top tier when it comes to power and innovation."

– Brandon Trimborn,
Project Manager and Heavy Equipment Operator
for Triple T Excavating





COMPACT LOADERS



BOBCAT GOES PLATINUM.



THESE LIMITED-EDITION BOBCAT T76 AND S76 LOADERS HAVE IT ALL.

You've worked hard to build a successful business. The Bobcat Platinum package T76 and S76 loaders are designed to set you and your accomplishments apart. These limited-edition showstoppers come exclusive with the Bob-Dock™ attachment mounting system. Plus, get best-in-class technology like the Bobcat 7-inch touch display, rear view camera, automatic ride control, dual-direction bucket positioning, auto throttle, a 5-year Machine IQ Health and Security subscription, along with Bobcat MaxControl remote operation. You'll also get every optional performance and comfort upgrade available.

BOB-DOCK ATTACHMENT MOUNTING SYSTEM

Exclusive to the Platinum package is the Bob-Dock attachment mounting system, which comes installed from the factory and includes two adapter plates. The Bob-Dock system delivers the fastest hands-free hookups for both hydraulic and non-hydraulic attachments.

TOUGH LOOKS TO MATCH YOUR TOUGHEST JOBS

These limited-edition loaders have a sleek black chrome exhaust tip, special interior decals, charcoal tailgate guard, plus a numbered edition plate and distinctive Platinum badge.

LEARN MORE ABOUT PLATINUM LOADERS.





Machine: S86
Attachment: Snowblower



BIGGER DONE BETTER: THE LARGEST COMPACT LOADER LINEUP IN THE INDUSTRY

With more models, options, accessories and attachments than the rest, you can precisely match your machine's performance to your work needs and get maximum versatility for every job that comes your way.

The T86 and S86 are designed to offer the highest levels of usable engine and hydraulic horsepower. With Premium Power Performance to distribute the muscle where and when it's needed during multitasking operations and up to three hydraulic flow options in one machine, including standard flow along with high-flow and super-flow options, you get more attachment versatility and higher built-in productivity than ever before.

SEE YOUR DEALER OR VISIT BOBCAT.COM TO GET A CLOSER LOOK AT **COMPACT LOADERS**.

CHOOSE YOUR LOADER WISELY. SEE OUR
TIPS FOR SELECTING THE RIGHT COMPACT LOADER.



Machine: T66
Attachment: Pallet Fork



MULTIPLE TREAD PATTERNS ARE AVAILABLE TO MATCH YOUR TRACK TO YOUR WORK CONDITIONS.

Machine: S76
Attachment: Angle Broom



CHOOSE FROM A VARIETY OF TIRE STYLES AND WIDTHS TO MATCH YOUR WORK.

COMPACT TRACK LOADERS

EXCLUSIVE

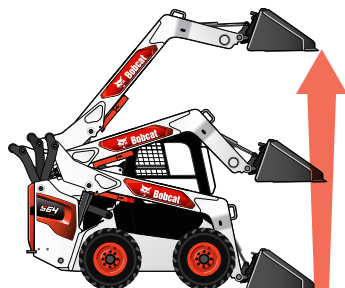
5-LINK TORSION SUSPENSION UNDERCARRIAGE

This option dramatically reduces vibration from the undercarriage for a more comfortable ride.

SOLID-MOUNTED UNDERCARRIAGE

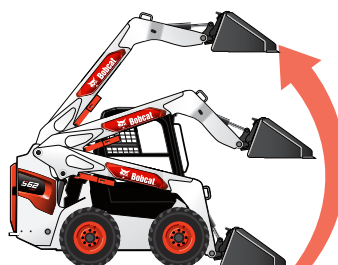
Standard on most models, providing improved traction to work in mud, sand, manure, dirt and other soft conditions.

LIFT PATH TYPES FOR LOADERS



VERTICAL LIFT PATH

Higher lift capacity and more reach at full lift height.



RADIUS LIFT PATH

Arc arm movement for maximum reach at truck bed height.



Machine: S66
Attachment: Sweeper



FEATURES **ON DEMAND**

FEATURES ON DEMAND

With Bobcat Features On Demand, you can add additional features to select skid-steer and compact track loader models in an instant – as your work demands or budget allows. You can test a variety of premium features before buying or ask your dealer to quickly and easily “turn on” the features you want. It’s that simple.

Features can be purchased individually or as part of a Features On Demand performance package. See individual machine options for availability.

PERFORMANCE

HIGH LIFT HEIGHT

Extra lift height gives you more capability for dumping into high-sided dump trucks and hoppers.

POWERFUL LIFT CAPABILITY

Cast-steel lift arm sections increase strength, and optimized geometry ensures excellent lift capacity – even at full reach.

INLINE ENGINE

A Bobcat engine with a durable direct-drive system provides more usable horsepower and torque for pushing, digging, lifting and operating attachments.

DUAL-DIRECTION BUCKET POSITIONING

Optional dual-direction bucket positioning keeps the bucket load at a consistent angle throughout the lift cycle to minimize spilling and maximize efficiency.

TWO-SPEED TRAVEL

Machines standard with single-speed travel have the option to upgrade to Two-Speed travel, which boosts your loader’s top travel speed to reduce the time it takes to move across your jobsite.

AUTOMATIC RIDE CONTROL

This optional feature cushions your load to reduce spillage and increase comfort.

AUTO-THROTTLE

Conserve fuel and enhance efficiency with the patented auto-throttle feature. Optional on select loader models equipped with Features On Demand, auto-throttle automatically applies engine rpm so you can perform tasks more quickly.

Machine: T86
Attachment: Bale Fork



COMFORT

REAR VIEW CAMERA

The rear camera offers a rear view from the operator's seat, helping identify obstacles and providing an additional viewpoint for certain applications.

ONE-PIECE SEALED AND PRESSURIZED CAB

Isolates the operator from engine and hydraulic noise, enhances the efficiency of heating and air conditioning, and minimizes dust and dirt entering the cab.

SIDE LIGHTING KIT

Optional side lights give you better light output and increased productivity.



EXCLUSIVE

OPTIONAL CLEAR-SIDE ENCLOSURE

Durable, mesh-free windows resist damage and abrasion while providing an optimal view.

ALL-AROUND VISIBILITY

Large front, side, top and rear windows provide a better view of your work, plus you can see the tracks or tires without raising the lift arms. The cab-forward design moves you closer to the attachment for a better vantage point.

STANDARD OR PREMIUM LED LIGHTS

Reliable standard LED lights provide far-reaching visibility when natural light is low. Upgrade to optional premium LED front lights that wrap around the cab's upper corners to light a wider area.



Machine: S76

IN-CAB DISPLAY OPTIONS

5-INCH DISPLAY

The standard 5-inch display for loaders includes:

- Password-protected keyless start
- Attachment settings
- Auto idle activation/deactivation
- Engine hour tracking
- Detailed fault code explanations and instructions

OPTIONAL 7-INCH TOUCH DISPLAY

The advanced 7-inch touch display option includes all the features of the 5-inch display and a lot more.

- Bluetooth®-enabled device connectivity, USB power port and auxiliary input
- Active noise canceling during phone calls
- Detailed operator statistics and customizable contact lists for each operator
- Up to 20 unique operator codes for jobsite security
- Integrated radio with 12 AM and FM radio presets and six weather band presets per operator

CONTROL TECHNOLOGIES

BOBCAT STANDARD CONTROLS

Each steering lever independently controls the left- or right-side drive; foot pedals control the lift and tilt.

SELECTABLE JOYSTICK CONTROL (SJC)

The SJC option offers low-effort hand control of all machine drive and work group functions. ISO or “H” patterns can be easily activated by a push button or rocker switch inside the cab.

OPERATION MODES INCLUDE:

EXCLUSIVE

STEERING DRIFT COMPENSATION

Makes minor adjustments to the steering – this is beneficial when you side-shift certain attachments.

DRIVE RESPONSE MODE

Adjust how the drive responds to joystick movement.

HORSEPOWER MANAGEMENT

Automatically adjusts the loader drive system to maximize pushing and digging power and minimize the chance of stalling. It's disabled when you use speed management.

WORK GROUP RESPONSE MODE

Change how the lift and tilt functions respond to joystick movement.

SPEED MANAGEMENT

Provides a full range of joystick motion at a slower speed, giving you precise control of machine movements while maintaining maximum driveline torque and full hydraulic power for attachment performance.





Machine: S64
Attachment: Flail Cutter

COMPACT LOADERS

 **Bobcat**
MACHINE IQ[®]

With Machine IQ, you can track your machine with GPS, create a custom planned maintenance program with your dealer, access fault code troubleshooting and more. It's the easy way to maximize your machine's productivity. It's factory-installed on most loaders, and all you need to do is activate your account. See pages 8-9 for more info.

UPTIME

CAST-STEEL LIFT ARMS

Select Bobcat loader lift arms have cast-steel construction for increased material strength and rigidity. It also allows a slimmer-profile arm that enhances your visibility.

PROTECTED COMPONENTS

Work confidently with protected hoses and quick couplers, plus watertight, corrosion-resistant electronic connectors.

MACHINE PROTECTION

Alerts you if there is a risk of damage. If necessary, it will de-rate performance so you can stop work or move the loader for diagnosis.

EFFICIENT COOLING

Run at optimal temperatures with a high-capacity radiator and oil cooler – plus a fan that's 50% larger than prior models.

FEATURES ON DEMAND

REVERSING FAN

Temporarily reverse the cooling fan direction to blow dust and small debris from the radiator and rear screens, reducing maintenance and downtime.

SERVICEABILITY

SELF-DIAGNOSTICS

On all Bobcat loaders equipped with a digital display, you can track machine performance and access machine alerts.

SIMPLE, STATE-OF-THE-ART AND NON-DPF

Bobcat engines meet Tier 4 regulations without a diesel particulate filter (DPF), saving time and long-term maintenance costs.



Extended warranty available. Learn more.



Machine: T76
Attachment: Soil Conditioner

VERSATILITY

BOB-TACH ATTACHMENT MOUNTING SYSTEM

The standard Bob-Tach® attachment mounting system offers attachment changes in less than a minute. Its cast-steel connection point features fewer welds for more strength, plus openings that allow dirt and debris to pass through.

POWER BOB-TACH SYSTEM

The optional Power Bob-Tach system changes non-hydraulic attachments from inside the cab.



EXCLUSIVE

BOB-DOCK SYSTEM

With the Bob-Dock system, available on select models, you can change hydraulic attachments from inside the cab without stepping outside the cab to remove or connect hoses.

STANDARD FLOW

Select standard flow to operate attachments that require lower hydraulic horsepower.

FEATURES ON DEMAND

HIGH FLOW

This option provides a big power boost for improved production with select hydraulic attachments like the Bobcat flail cutter, trencher, planer and stump grinder.

SUPER FLOW

Available on the T86 and S86, this hydraulic option tackles the most demanding applications, such as milling pavement or clearing trees and heavy brush, with attachments designed specifically for super-flow hydraulics.



COMPACT EXCAVATORS

Machine: E48 Platinum
Attachment: Nitrogen Breaker



BOBCAT GOES PLATINUM.



THE LIMITED-EDITION, FULLY OPTIONED BOBCAT E48

WE LOADED IT UP. HOW YOU USE IT IS UP TO YOU.

Its unique Platinum design is easy to notice. Its performance and precision are impossible to ignore. Push your performance and productivity to the highest level in the limited-edition Bobcat Platinum package E48 compact excavator.

This 42 hp machine is more than high-end. It's packed with features that help you outperform even your own highest standards. Plus, you'll get the job done in ultimate comfort. Take command of every job with a rear view camera, LED enclosure light kit, standard long arm and counterweight, a 5-year subscription to Machine IQ, and engine block heater. You've built a business doing work better than anybody can. You should have an excavator that works like nothing else.

UNIQUE PLATINUM DESIGN

Set yourself apart from the crowd in the Platinum E48 compact excavator. The Platinum package exterior and interior styling bring impressive looks to ugly jobs. Tough-looking charcoal body panels, special interior decals and other impressive details let every bystander know there's some serious work about to get done.

LEARN MORE ABOUT PLATINUM EXCAVATORS.





COMPACT EXCAVATORS

Machine: E55
Attachment: Bucket

RULE THE UNDERGROUND.

Work is tougher. Deadlines are shorter. Your equipment needs to be better.

Bobcat compact excavators are designed to help you take on challenging jobs in confined working conditions with confidence. These powerful, comfortable and versatile machines supply a long list of hard-working innovations that maximize your productivity.

SEE YOUR DEALER OR VISIT BOBCAT.COM TO GET A CLOSER LOOK AT **COMPACT EXCAVATORS.**

PERFORMANCE

MAXIMUM LIFT CAPACITY

With their exemplary balance and innovative design that delivers maximum power and torque, Bobcat compact excavators deliver strong lift capacity that improves productivity.

REACH, DEPTH AND MANEUVERABILITY

Bobcat excavators deliver the ideal combination of performance-enhancing reach and depth in a compact footprint that can go wherever the work demands. Three unique arm options enhance your ability to customize the way you work. Learn more about arm options on page 30.

IMPRESSIVE BREAKOUT FORCES

High-efficiency hydraulic pumps match force to demand, continuously responding to loads and delivering exceptional arm and bucket forces.



Extended warranty available. Learn more.



Machine: E48
Attachment: 3-Tined Grapple





COMFORT

COMFORTABLE CAB

Enjoy a spacious, comfortable cab, plus a large adjustable suspension seat. Optional heat and air conditioning keep you comfortable, even in extreme conditions.

EXCELLENT VISIBILITY

Narrow cab pillars and ample glass surface area give you visibility that's never been better to your work group and blade.

LOW-EFFORT JOYSTICKS

Equipped with fingertip boom swing and auxiliary control, Bobcat joysticks provide quick, precise movement with low effort and less fatigue over long hours of operation. They put more control at your fingertips.

OPTIONAL REAR CAMERA

Offers a continuous rear view from the operator's seat, if desired, which provides an additional viewpoint for certain applications.

GREAT RIDE QUALITY AND MINIMAL VIBRATION

Bring noticeably smoother ride quality to the job, ensuring greater comfort while moving across bumpy terrain. Robust body panels, hinges and latches are designed to reduce vibration in the cab.

OPTIONAL HIGH-BACK HEATED SEAT WITH HEADREST

It's easy to find the right operating position in the optional high-back heated seat. You get more support for long hours of operation.

OPTIONAL TOUCH DISPLAY

The optional 7-inch display provides advanced machine interaction. The integrated radio with Bluetooth technology allows a wide range of on-the-job entertainment plus the ability to make and receive hands-free phone calls. On excavators equipped with the rear view camera, the camera is integrated with the touch display, eliminating the need for multiple screens in the cab. Up to 20 unique operator codes enhance jobsite security and provide detailed operator statistics that can help your staff work more effectively. The easy-to-use touch screen is waterproof and hardened to reduce scratching.

UPTIME

MACHINE PROTECTION

Bobcat excavators monitor engine and hydraulic functions. If conditions risk damage to the engine or hydraulic components, the system will alert the operator and, if necessary, de-rate engine power as well as hydraulic flow. It still allows the operator to complete the job at hand or move the excavator to an area for diagnosis.

REDESIGNED BOBCAT ENGINE

Engine enhancements include improved cold start and engine recovery under severe load with a fuel recirculation valve that returns warm fuel to the lift pump and reduces gelling issues.

INCREASED ENGINE OIL SERVICE INTERVAL

The recommended engine oil service interval has increased from 500 to 750 hours, giving you more uptime per oil change.

TOOLLESS COOLING PACKAGE

The side-by-side heat exchangers offer easy, tool-free cleanout, with no need to separate coolers to remove debris or wash out the coolers.

SIMPLE MACHINE TIE-DOWN

Easy-to-reach tie-down locations help you quickly secure your machine to a trailer for simple transportation.

Machine: E48 Platinum
Attachment: Nitrogen Breaker



GET MORE DONE WITH MACHINE IQ.

With Machine IQ, you can track the efficiency and productivity of your fleet, watch your machine's location history, see operating hours and fuel usage, and even receive maintenance and operation notifications. Access machine data any time via your Bobcat owner portal account. See pages 8-9 for more info.

SERVICEABILITY

Purposefully designed to get daily maintenance done quickly, rear and side access doors make it easy to find and reach your engine checkpoints. A centralized grease bank makes fast, simple work of lubricating the slew bearing, slew pinion and swing cylinder.

Machine: E88



VERSATILITY

OPTIONAL CLAMP DIVERTER VALVE

With the optional clamp diverter valve, you have more flexibility to run attachments without disconnecting the clamp.

HYDRAULIC PIN-GRABBER ATTACHMENT QUICK COUPLER

This optional attachment mounting system for the E88 provides the ability to change buckets without leaving the seat.



EXCLUSIVE

HYDRAULIC X-CHANGE ATTACHMENT MOUNTING SYSTEM

For the most convenient attachment changes in the industry, choose the optional Hydraulic X-Change™ system. Release and secure attachments from inside the cab with the flip of a switch. The standard X-Change attachment mounting system is included standard on 3- to 6-ton models for easy and fast attachment connection and removal.



EXCLUSIVE

DEPTH CHECK SYSTEM

Depth check minimizes the tendency to over- and under-dig. Operators can monitor digging depth from the in-cab display as they dig. There's no need for a second worker – or repeated trips in and out of the cab. Depth check functions are integrated with the standard display or the optional touch display.



**SCAN FOR A CLOSER LOOK AT THE
BOBCAT DEPTH CHECK SYSTEM.**

INTEGRATED LIFT EYE

The lift eye, standard on select excavators, gives you a convenient method for handling objects or moving them in and out of the trench.

Machine: E88

Attachment: Hydraulic Quick Coupler



COMPACT EXCAVATORS



NEW PRODUCT

Machine: E40

Attachment: Nitrogen Breaker



SELECTABLE AUXILIARY HYDRAULIC FLOW

Three flow rates on select base models help you match the requirements of select Bobcat hydraulic attachments. Most excavator models offer even more customization with up to 10 flow rates.



FIND THE RIGHT MACHINE FOR YOUR WORK. **MORE OPTIONS MAKE IT EASY.**

ARM CONFIGURATIONS

Choose the arm configuration that is best for your work. The standard arm provides maximum breakout force and lifting ability. The long arm gives you longer reach and more dig depth. The extendable arm gives you the best of both worlds by delivering the power and performance of a standard arm while giving you extra reach on demand – up to 2 feet, depending on the model.



STANDARD ARM



LONG-ARM OPTION



EXTENDABLE-ARM OPTION

*Machine: E60 With Extendable Arm
Attachment: Bucket With Extendable Arm Clamp*

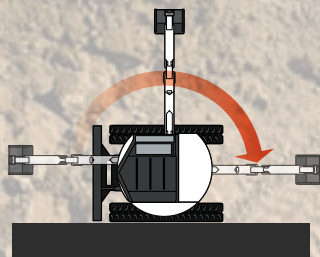


**COMPARE ARM OPTIONS. SCAN THE CODE TO LEARN
MORE ABOUT BOBCAT ARM CONFIGURATIONS.**

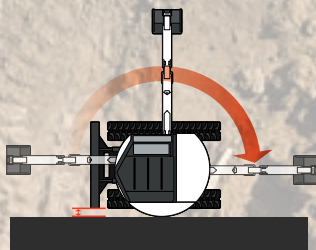


TAIL SWING TYPES

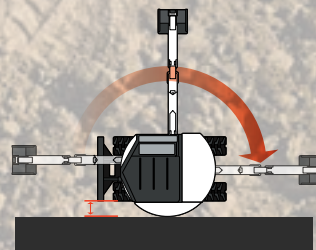
Choose an excavator model with a tail swing configuration that best fits your maneuverability requirements.



ZERO TAIL SWING



MINIMAL TAIL SWING



CONVENTIONAL TAIL SWING



*Machine: E35
Attachment: Bucket*



EXCLUSIVE

CLAMP-COMPATIBLE EXTENDABLE ARM

Dig deeper, reach farther and minimize repositioning with the only clamp-compatible extendable-arm option on the market.



TAKE ON A BIGGER CHALLENGE.

Dig into larger projects and deeper revenue streams with large excavators.

Bigger challenges call for bigger solutions. Get the size, power and reach you need to take on your biggest, toughest jobs. Bobcat large excavators deliver the impressive lift capacities and reach needed for your most difficult jobs – while retaining great maneuverability.

PERFORMANCE

TAIL SWING TYPES

Reduced tail swing (E145) allows for enhanced maneuverability in tight jobsites, so you can confidently use the machine around obstacles or against walls. For tough work that requires the best possible lift capacity, the conventional tail swing (E165) gives you the strength you need.

FOUR POWER MODES

Four selectable power modes give you adaptable performance to tackle the job as you see fit. Choose from Power+, Power, Standard Power or Economy modes. For a quick boost of power, the One-Touch Power Boost button increases hydraulic power, allowing you to break through hard ground.

IMPRESSIVE CAPACITY AND FORCE

Class-leading hydraulics provide reliable, steady power to the work group, saving time with every digging cycle. The combination of size and hydraulic power enables you to lift more with greater confidence – so you can pick and place items with ease.

SMART POWER CONTROL

While in digging work mode, Smart Power Control matches load to engine rpm, hydraulic pump torque and engine response, improving efficiency in any of the four power modes. Operators can activate it and turn it off whenever necessary.



COMFORT THAT GOES BIG

The E145 provides an environment that's more comfortable than ever before, plus, you'll enjoy an easy-to-read 8-inch touch display, rear view camera and overhead view displays that give you 360-degree visibility.

QUIET, COMFORTABLE CAB

The pressurized cab features a seamless sound-isolating seal to keep sound levels extremely low inside the operator station. The cabin is isolated from the frame to reduce noise.

HEATED AIR-SUSPENSION SEAT

Enjoy a wide range of adjustment points to find optimal comfort, including seat height, seat cushion angle, back recline and more.

STANDARD REAR, SIDE AND 360-VIEW CAMERAS

Watch your surroundings and gain greater peace of mind with convenient rear view and side view cameras. Plus, get a 360-degree view of your environment with four strategically mounted cameras that create a composite overhead view on the 8-inch touch display.



Machine: E145
Attachment: Bucket

VISIT [BOBCAT.COM](https://www.bobcat.com) TO GET A
CLOSER LOOK AT LARGE EXCAVATORS.





Machine: L95
Attachment: Bucket



MOVE LIKE YOU MEAN IT.

Make light work of heavy lifting with a Bobcat compact wheel loader.

Power through the toughest jobs with ease. With significant bucket capacity, high lift height, impressive maneuverability and swift travel speeds, Bobcat compact wheel loaders provide exceptional material handling capabilities to help you accomplish more. The most powerful compact wheel loader in the lineup, our new Bobcat L95, moves like nothing you've seen before.

SEE YOUR DEALER OR VISIT BOBCAT.COM TO GET A CLOSER LOOK AT **COMPACT WHEEL LOADERS**.



Extended warranty available. [Learn more.](#)



PERFORMANCE

HIGH-PRODUCTION LIFT CAPABILITY

For efficient lifting and loading, a Bobcat compact wheel loader is hard to beat. Standard bucket capacities of up to 1.2 cubic yards make fast work of tough material handling tasks in landscaping, construction, agriculture and other industry applications.

L95

Standard bucket: 1.2 cu. yd.

Lift height: 10.1 ft.

ROC (with bucket straight): 3,981 lb.

L85

Standard bucket: 1 cu. yd.

Lift height: 10.0 ft.

ROC (with bucket straight): 3,974 lb.

L65

Standard bucket: 7/8 cu. yd.

Lift height: 9.9 ft.

ROC (with bucket straight): 3,133 lb.

EXCELLENT PUSHING POWER

The electronic hydrostatic transmission and horsepower management work together to maximize pushing and loading power – and minimize stalling without sacrificing performance.

TIGHT TURNING RADIUS

As it turns, the compact wheel loader's articulated steering allows the rear tires of the loader to match the path of the front tires for easy obstacle navigation and efficient work on jobsites where space is limited.

HIGH-SPEED TRAVEL MODE (L95)

Spend less time traveling across a jobsite or between jobs. Move faster – and get the job done quicker – with travel mode for Bobcat compact wheel loaders. This time-saving feature increases your top travel speed to as high as 24 mph.

STANDARD HIGH-FLOW HYDRAULICS (L85, L95)

The L85 and L95 come standard with high-flow hydraulics that provide up to 27 gpm. This allows operators to maintain peak efficiency while operating approved hydraulic attachments.

**FIND OUT HOW TO CHOOSE THE
RIGHT COMPACT WHEEL LOADER SIZE.**



Machine: L85
Attachment: Angle Broom



COMFORT

COMFORTABLE RIDE AND OPERATION

Low noise levels in the cab, smooth turning, frame oscillation and options like automatic ride control make for a quality ride. The joystick moves with the seat and is adjustable forward or backward for added comfort and controllability.

HEATED AIR-RIDE SEAT (L95 CAB)

The heated air-ride seat cushions operators from rough terrain and machine vibration for a smooth, comfortable ride. Adjustable pressure level accommodates various operator sizes, weights and preferences.

5-INCH DISPLAY

The 5-inch display panel provides full-featured machine interaction and monitoring capabilities from right in the cab. Diagnostics and detailed operation information you can access through the display include monitoring, troubleshooting and error conditions.

VERSATILITY

ATTACHMENT VERSATILITY

Bobcat attachments are integrated with your wheel loader's electronics and hydraulics for maximum performance. Whether it's moving pallets, removing snow or clearing debris, Bobcat attachments help you take on new jobs or get more use from one machine.

ADVANCED ATTACHMENT CONTROL MODE

With the advanced attachment control mode, you can control the engine and travel speed separately for full auxiliary hydraulic performance.

Machine: L95
Attachment: Utility Grapple



Machine: L85



SERVICEABILITY

EXPANSIVE SERVICE AREA

The wide tailgate opening with gas-assisted lift support gives you nearly 180 degrees of service access. Engine checkpoints and centralized grease points are within easy reach – so routine maintenance is quick and simple.

NON-DPF TIER 4 SOLUTION

Tier 4 Bobcat engines achieve emissions compliance without the use of a diesel particulate filter (DPF) or selective catalytic reduction (SCR).

CENTRALIZED GREASE POINTS

A centralized grease bank makes essential daily maintenance quick and easy.



Machine: L85



VERSATILITY TO RISE ABOVE THE REST

Bobcat telehandlers extend your capabilities.

Bobcat telehandlers are made to reach high and stack fast with unparalleled precision and performance. Their lift height, reach and capacity, along with a heavy-duty telescoping boom, help you easily handle the most difficult jobs. They can also backfill, push, dig – and use a wide variety of Bobcat attachments to take your versatility even higher.



**GET A CLOSER LOOK AT
BOBCAT TELEHANDLERS ON BOBCAT.COM**



Machine: TL519
Attachment: Bale Fork

SPACIOUS, COMFORTABLE CAB

The Bobcat telehandler cab surrounds operators in comfort, offering great visibility and innovative, user-friendly instrumentation that puts you in control of challenging jobs. Enjoy a cloth suspension seat, standard heat and air conditioning, a suspended cab that reduces vibration, a multifunction LCD screen, and more.

**CONTACT YOUR DEALER OR VISIT BOBCAT.COM
TO REQUEST A PRICE QUOTE TODAY.**



Extended warranty available. [Learn more.](#)



KEY FEATURES

TWO-STAGE, LOW-PROFILE BOOM

The low-profile telescopic boom gives you the power to access a wide range of lift heights and reach lengths. The boom's low mount and rear pivot position provide superior digging ability – as the machine pushes, more weight stays on the front axle.

AUTOMATIC TILT (ATTACHMENT) POSITIONING

The automatic tilt for bucket or attachment positioning increases material handling speed for higher productivity. It further prevents spillage when raising or lowering the boom and helps to ensure consistent, productive attachment performance.

AUTOMATIC RIDE CONTROL

Reduces material spillage, allowing faster travel speeds for increased productivity. Its dampening effect increases comfort by offering a smoother ride when traveling across uneven terrain. Available on the TL619, TL723 and TL923.



EXCLUSIVE

SMART HANDLING SYSTEM (SHS)

Combine precision with productivity. Bobcat SHS allows you to easily adjust the speed of the boom movements via the joystick. It's great for when you need to combine high engine power with precise, careful boom speeds.

REACH FOR MORE VERSATILITY.



EXCLUSIVE

FIVE OPERATION MODES

Gain the versatility you need for a wide variety of applications:

- ECO Mode
- Smooth Drive Mode
- Dynamic Drive Mode
- Flex Drive Mode
- Advanced Attachment Control Mode



LEARN MORE ABOUT EACH OPERATION MODE.



EXCLUSIVE

FOUR STEERING MODES

All-wheel, front-wheel, crab and semi-crab steering modes give you tailored maneuverability.



LEARN MORE ABOUT THE FOUR STEERING MODES.

EASY ATTACHMENT CHANGES

The Power Bob-Tach system on the TL519 and TL619 gives you the fastest attachment changes in the industry. TL723 and TL923 have a power quick-tach system.

Machine: TL723
Attachment: Bucket

Machine: TL923
Attachment: Pallet Fork

VIEW ATTACHMENT SECTION ON PAGES 70-105 FOR MORE DETAILS AND FULL LIST OF ATTACHMENTS.



LIGHT COMPACTION

MORE WAYS TO PACK IN THE PRODUCTIVITY

Bobcat light compaction machines make short work of compaction tasks on a wide variety of materials.

With our lineup of light compaction equipment, Bobcat offers high-productivity, robust and cleverly designed machines. Bobcat light compaction machines are agile, versatile, easy to operate and simple to maintain.



*Machine: FP15.50 Plate Compactor
Accessory: Wheel Kit*



Machine: R68P Upright Rammer

REVERSIBLE PLATE COMPACTORS

Powerful Bobcat reversible plate compactors enable quick directional changes for maximum compaction output in tight spaces.

Plate compactors shown with optional wheel kit.



FORWARD PLATE COMPACTORS

Equipped with durable, efficient engines, our range of forward plates provides maximum power and minimal fuel consumption.

RAMMERS

Bobcat rammers deliver high performance and efficient compaction power. Their clever design keeps their center of gravity low for optimal balance.



TRENCH ROLLERS

Operated using an ergonomic remote control for maximum comfort, our dual-amplitude trench roller features an articulating joint and oscillating frame for consistent ground contact.



GET A CLOSER LOOK ON [BOBCAT.COM](https://www.bobcat.com)

Also available on [shop.Bobcat.com](https://shop.bobcat.com)



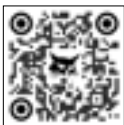
THE FUTURE OF MATERIAL HANDLING UNLEASHED



NEW PRODUCT

Bobcat forklifts take your performance higher.

Bobcat internal combustion pneumatic and electric forklifts release the beast within to get the job done with maximum power and efficiency – all day, every day. With reduced fuel consumption and fast-charging opportunities, the performance only gets better. Bring the power of One Tough Animal® to your operation with Bobcat forklifts.



LEARN MORE ABOUT BOBCAT FORKLIFTS.

Machine: BR20SP Electric Forklift



LIGHTS. POWER. ACTION.

A new era in power begins under the orange and white Bobcat banner. Set the stage to accomplish more. Add the new Bobcat portable power and industrial air equipment to your toolkit.



PORTABLE POWER
AND INDUSTRIAL AIR



NEW PRODUCT

PORTABLE GENERATORS

25 kVA to 570 kVA; equipped with an extensive array of standard features plus customizable options. Enjoy unmatched flexibility and versatility for every job.



NEW PRODUCT

PORTABLE AIR COMPRESSORS

Nothing performs like a Bobcat air compressor when the pressure's on. 185 cfm to 1,600 cfm and 100 psi to 365 psi range; built for quality, reliability and performance.



NEW PRODUCT

INDUSTRIAL AIR

From 10 hp to 300 hp, new Bobcat industrial air compressors are available in fixed and variable speed models. With more offerings coming in 2024, Bobcat consistently offers premium performance with a ruggedly reliable design and an industry-leading warranty.



NEW PRODUCT

PORTABLE LIGHT TOWERS

6 kW to 8 kW; Bobcat has a line of professional-grade portable light towers to illuminate your workspace, whatever that may be.



LEARN MORE ABOUT
BOBCAT INDUSTRIAL AIR.



LEARN MORE ABOUT
BOBCAT PORTABLE POWER.



PARTS AND SERVICE

SHOP FOR BOBCAT PARTS.



KEEP YOUR MACHINES RUNNING SMOOTHLY.

Nothing inspires confidence like the consistent performance of your Bobcat equipment. Your local Bobcat dealer has parts, service and everything you need for peak performance that lasts.

CONTACT YOUR BOBCAT DEALER FOR BOBCAT **PARTS AND SERVICE.**



FIND YOUR NEAREST BOBCAT DEALER.

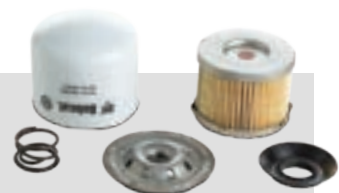
ENGINEERED TO BE BOBCAT TOUGH



BOBCAT TRACKS

In independent tests against other brands that fit Bobcat machines, genuine Bobcat tracks wore more evenly and slowly. Bobcat tracks also retained more diameter, keeping more track on the ground for longer.

Download our track buying guide.



BOBCAT FILTERS

Just because it fits doesn't mean it's fit for your Bobcat machine. From its superior construction to its superior filter media that removes fine particulates, genuine Bobcat filters provide the ultimate in performance and protection.

Compare Bobcat filters to the other brands.



BOBCAT REMAN

For like-new performance and reliability at the lowest cost, get Bobcat reman parts. These parts are fully restored to Bobcat performance specs, and they have the same warranty as new Bobcat parts.

Shop Bobcat reman parts.



BOBCAT GROUND ENGAGEMENT TOOLS

Make every time you touch the ground count with Bobcat ground engagement tools like bristles and gutter brushes, augers and breaker bits, bucket teeth and cutting edges, plus many more.

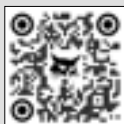
Download our bristle buying guide.



BOBCAT FLUIDS

Fill up on genuine Bobcat protection with the custom-blended oils and additives in Bobcat fluids and lubricants. Unlike other brands, these fluids are made for the harsh conditions and hard jobs you face.

Shop Bobcat fluids.



MAINTENANCE KITS

Stay up and running with genuine Bobcat maintenance kits. They contain all the right parts for key service intervals – at the best price.

Shop maintenance kits.





JOSH DUHAMEL BUILDS A LEGACY ON THE BIG SCREEN ... AND WITH BOBCAT EQUIPMENT.

When he's not starring in movies or participating in celebrity charity events, Josh Duhamel enjoys escaping to a lake deep in the heart of the Minnesota wilderness. Replacing the backbreaking manual labor of pickaxes and shovels with Bobcat equipment, he's able to dig, lift, clear and shape his little slice of heaven faster and with more precision. Now he is well on his way to creating a lasting legacy for his family that holds his heart.





To mold a more relaxing, joyful world for his family, Josh has made numerous changes to his lake property over the years. One project that was always on his list was a food plot for deer hunting. With access to the latest Bobcat equipment, including loaders, tractors and some job-matched attachments, he finally made it happen. Now, he's making plans for a second plot where he can grow crops for his dinner table.

Because he's got the horsepower needed to really get things done, he can clear land, haul trees, plow snow, or move large rocks and stumps. In other words, Bobcat machines allow him to make lasting changes on the land he loves.

Cheers to many more generations of moving dirt, enjoying wildlife and making memories at the lake.



"To me, this is the thing that I'm most proud of that I've built, that I can pass down hopefully for generations."

— Josh Duhamel



OWN YOUR TURF.

Bobcat zero-turn mowers are engineered to keep you on top of your game.

This is your turf. Take control of every inch with Bobcat zero-turn mowers. These fast, powerful machines achieve a pristine quality of cut with their innovative features and hard-working, long-lasting, rugged durability. No matter what you're looking for in a mower, Bobcat gives you the edge you need for a tough job that's all about results.

Machine: ZT6000



NEW PRODUCT

BOBCAT ZT6000e ZERO-TURN MOWER

Results that will charge you up

The ZT6000e electric zero-turn mower is designed to deliver 4-6+ hours* of mowing performance with its integrated lithium-ion battery, electric drive and direct-drive electric blade motors. This commercial powerhouse includes the AirFX™ cutting deck that gives owners a phenomenal quality of cut, including even clipping dispersal and a cleaner deck throughout the day.

Its bullnose design and the bolt-on baffles lift grass for a remarkable, uniform finish. With significantly reduced noise levels compared to mowers with internal combustion engines, zero emissions and a 4.3-inch touch display, these mowers change the game for operator experience. The ZT6000e can be operated all hours of the day, even during early morning hours when neighbors are asleep.

- Includes a 52- or 61-inch AirFX deck
- Integrated 58-volt/20.4 kWh lithium-ion battery supports up to 4-6+ hours* of mowing
- Recharges in 6.3 hours with 240-volt connection, 12.6 hours with 120-volt connection
- Three electric blade motors provide tip speed up to 18,500 ft./min. for superior productivity
- 3-year/2,000-hour limited warranty

ALL-ELECTRIC



DECKED-OUT PERFORMANCE

From deep deck designs and their unique geometries to patented baffles, airflow and vacuum seal technologies, Bobcat zero-turn mower cutting decks deliver a quality of cut that meets our customers' high demands.

BULLNOSE AIRFX CUTTING SYSTEMS BLOW THE COMPETITION AWAY.

The AirFX system keeps you a cut above the rest.

- Deeper profile for increased vacuum lift
- Easily replaceable, patented, bolt-on Air-Gap baffles for more efficient airflow and enhanced serviceability
- Bullnose design allows grass to stand up before it reaches the mower blades
- Steel-fabricated spindles on gas-powered units for increased durability
- Even clipping dispersal
- Improved deck cleanliness
- Adjustable front lip for optimized cutting on varying conditions and grass types

RUGGED DURABILITY WITH TUFDECK & TUFDECK PRO CUTTING SYSTEMS

Heavy-gauge steel construction, replaceable bolt-on front baffles and reliable steel-fabricated spindles provide a manicured finish every time.

SUPERIOR DISCHARGE WITH DURADECK CUTTING SYSTEMS

Double-Wave™ bolt-on baffles increase airflow throughout the deck for excellent results, and they are built tough enough to handle everything commercial jobs dish out.



AIRFX DECK WITH PATENTED AIR-GAP BAFFLES

Deep deck design with patented Air-Gap baffles increases airflow, delivers an exceptional quality of cut and ensures a cleaner deck. Powerful airflow aggressively shoots clippings out the extra-large discharge chute for a clean finish.



Machines: (from left to right) ZT3500, ZS4000, ZT7000, ZT6000, ZT2000, WB700

INNOVATION THAT GROWS LIKE GRASS

As the mowing business gets tougher, Bobcat delivers more options.



NEW PRODUCT

BOBCAT ZT5000 ZERO-TURN MOWER

Commercial-grade durability and performance at an affordable price

With its top-of-the-line AirFX cutting deck, the new Bobcat ZT5000 offers a phenomenal quality of cut. Plus, you'll get operator-friendly controls, easy DIY serviceability and more. The ZT5000 comes with hard-working Bobcat durability – so it's a mower that's tough enough to build your professional reputation and grow your business.

- Includes a 52- or 61-inch AirFX deck
- High-performance Kawasaki® FX Series engine
- Upgraded Hydro-Gear® ZT-3800 transmission
- Dual fuel tanks for 7.8 gallons of capacity
- Ground speeds up to 10 mph
- High-back deluxe suspension seat
- 3-year/2,000-hour limited warranty



COMMERCIAL MOWERS

ZT7000 ZERO-TURN MOWER

Built to boost your bottom line, the ZT7000 is the peak of toughness and best-in-the-business performance. With transport speeds up to 19 mph and mowing speeds up to 13 mph, you can knock out quality results, job after job.



- Includes a 61- or 72-inch bullnose AirFX deck
- Kawasaki FX1000V 35.0 hp or FX1000V-EFI 38.5 hp engine
- Dual fuel tanks for 15 gallons of capacity
- Transport speeds up to 19 mph and cutting speeds up to 13 mph
- Extra-high back, full mechanical suspension seat
- Rotating bumper simplifies routine maintenance
- 3-year/2,000-hour limited warranty



ZT6100 ZERO-TURN MOWER

Built for anyone who demands as much from their machine as they demand from themselves. The ZT6100 has the power, speed and fuel capacity you need for hours of uncompromising mowing power.

- Includes a 61-inch bullnose AirFX deck
- Kawasaki FX850V-EFI 29.5 hp engine
- Dual fuel tanks for 15 gallons of capacity
- Ground speeds up to 12 mph
- High-back, full mechanical suspension seat
- Rotating bumper simplifies routine maintenance
- 3-year/2,000-hour limited warranty



ZT6000 ZERO-TURN MOWER

The versatility and dependability of the ZT6000 will satisfy the toughest customers and give your crew something to fight over.

- Includes a 52- or 61-inch AirFX deck
- Kawasaki FX801V 25.5 hp engine
- Dual fuel tanks for 15 gallons of capacity
- Ground speeds up to 12 mph
- High-back, full mechanical suspension seat
- 3-year/2,000-hour limited warranty



[CHECK OUT THE BOBCAT MOWER LINEUP.](#)

COMMERCIAL MOWERS

ZS4000 ZERO-TURN MOWER

Agility. Profitability. With a compact size, extra ground clearance and large drive tires, the ZS4000 gets around obstacles and on to the next job.

- Includes a 36-inch DuraDeck™ cutting system or a 48-, 52- or 61-inch AirFX deck
- Kawasaki engine options from 19.0-26.0 hp
- 5.1- or 6.5-gallon fuel capacity (depending on model)
- Ground speeds up to 10.5 mph (depending on model)
- Stand-on operator station with flip-up, anti-vibration platform allows for use as a walk-behind mower
- 3-year/2,000-hour limited warranty



WB700 WALK-BEHIND MOWER

The WB700 is a commercial, mid-size walk-behind mower with a powerful hydraulic drive that reduces operator fatigue and minimizes ground disturbance. Its compact size takes up less space on your trailer and is great for mowing around obstacles and highly landscaped environments.

- Includes a 36-, 48- or 52-inch TufDeck™ cutting system
- Kawasaki FS Series engine from 14.5-18.5 hp
- 5 gallons of fuel capacity
- Ground speeds up to 6.5 mph
- 3-year/2,000-hour limited warranty



ENTRY-LEVEL COMMERCIAL MOWER

ZT3500 ZERO-TURN MOWER

Convenient maintenance and all-day mowing comfort make the ZT3500 a powerful machine for anyone ready to take on the toughest turf.

- Includes a 48-, 52- or 61-inch TufDeck Pro cutting system
- Kawasaki FX Series engine from 20.5-23.5 hp
- 7.8 gallons of fuel capacity
- Ground speeds up to 10 mph
- High-back, full mechanical suspension seat
- 3-year/1,000-hour limited warranty



Extended warranty available. Learn more.



RESIDENTIAL MOWERS

ZT3000 ZERO-TURN MOWER

Pride in a job well done. That's the ZT3000 sweet spot. With top reliability and power for the job, you'll get a great, quality cut no matter how many acres you maintain.

- Includes a 48-, 52- or 61-inch TufDeck Pro cutting system
- Kawasaki FT Series engine from 20.0-24.0 hp
- 3.8 gallons of fuel capacity
- Ground speeds up to 8 mph
- High-back spring suspension seat
- 3-year/1,000-hour limited warranty



ZT2000 ZERO-TURN MOWER

The ZT2000 brings more features than other zero-turn mowers in the same price range. You'll get durability and a professional cut at an affordable price.

- Includes a 42-, 48- or 52-inch TufDeck cutting system
- Kawasaki FR Series engine options from 21.5-23.0 hp
- 3.8 gallons of fuel capacity
- Ground speeds up to 7 mph
- High-back spring suspension seat
- 3-year/500-hour limited warranty



SEE THE FULL LINEUP OF **BOBCAT MOWERS** AT BOBCAT.COM OR VISIT YOUR DEALER.



DOING THE GROUNDWORK FOR AMAZING TURF

Introducing our new lineup of turf renovation equipment.

With the innovation and extreme durability you expect from the Bobcat brand, Bobcat has launched your new go-to lineup for lush lawns, golf courses, sports facilities and more. These Bobcat machines can tackle every part of your turf renovation project.

LEARN MORE ABOUT BOBCAT **TURF RENOVATION** PRODUCTS.

SCAN TO LEARN MORE ABOUT NEW
TURF RENOVATION PRODUCTS.



GET THE RESULTS YOU WANT.



NEW PRODUCT

AERATORS

Bobcat aerators bring power, adaptability and efficient performance to create healthier lawns in less time. With their ease of use, rugged design and deep penetration, you'll tackle the task confidently and competently, job after job.

- Tackle large areas in no time with high working speeds and wide coverage.
- Achieve exceptional soil health with deep tine coverage that penetrates up to 5 inches into the turf.

Machine: AE30s



Machine: DT18



NEW PRODUCT

DETHATCHERS & OVERSEEDERS

Dethatch and overseed the ground with Bobcat dethatchers and overseeders. They're built to help you attain lush, reinvigorated lawns with simple operation, powerful engines and exceptional productivity.

- Cover 18 or 19 inches of width, depending on the model.
- Blade depth is infinitely variable to compensate for blade wear within the depth of range.
- In addition to dethatching, the DT20 boasts an outstanding germination rate of over 90%, while the DT18 offers exceptional versatility and seamless overseeding with its optional 30-pound seedbox.



NEW PRODUCT

SOD CUTTERS

With user-friendly operation, powerful engines and rock-solid durability, you can cut sod both quickly and precisely.

- Cut sod up to 2.5 inches thick.
- The cast-iron gearbox is built to last and provides superior uptime.
- Rubber isolation mounts dampen vibration, helping to improve operator comfort and reduce overall fatigue.

Machine: SC18H





Machine: CT4045
Attachment: Bucket
Implement: 3pt Rotary Cutter

LET YOUR WORK SPEAK VOLUMES.

Bobcat compact tractors are heavy on capabilities to lighten your load.

With legendary Bobcat performance funneled into multiple models across four platforms, it's easy to find the right one for your needs. From the nimble yet powerful 1000-2000 platforms all the way up to the heavy hitters in the 4000-5000 platforms, these workhorses all bring rugged performance you can count on. And with a wide array of attachments and implements, your new compact tractor will have you looking for new to-do's to cross off.

SEE YOUR DEALER OR VISIT [BOBCAT.COM](https://www.bobcat.com) TO GET A CLOSER LOOK AT COMPACT TRACTORS.

CHOOSE FROM FOUR SIZE CLASSES.

Bobcat offers an extensive lineup of compact tractors in four platforms that vary in machine size, horsepower range and cab configurations.



1000 PLATFORM **21-25 HP SUB-COMPACT TRACTORS**

A good choice for small acreages



2000 PLATFORM **25-40 HP COMPACT TRACTORS**

Open or enclosed cab options; a good choice for larger acreage owners



4000 PLATFORM **45-58 HP COMPACT TRACTORS**

Open cab; a good choice for farms and landscaping



5000 PLATFORM **45-58 HP COMPACT TRACTORS**

Fully enclosed cab; a good choice for farms and ranches



CHOOSE FROM FOUR TRANSMISSION TYPES.

MANUAL 9X3 SHIFT TRANSMISSION

This economical, reliable manual-shift transmission has nine forward gears and three reverse gears. It's the classic tractor transmission that many people remember from growing up on the farm.

2-RANGE & 3-RANGE HYDROSTATIC TRANSMISSION

The hydrostatic transmission (HST) provides maximum ease of use and fast, simple direction changes. A twin-pedal design provides one pedal to move you forward; the other moves you in reverse.

MANUAL 8X8 SYNCHRO SHUTTLE TRANSMISSION

For shift-on-the-fly functionality that is similar to a stick-shift automobile, the two-range synchro shuttle transmission (SST) allows you to clutch and shift across eight forward and eight rear speeds.

ELECTRONIC HYDROSTATIC TRANSMISSION (E-HST)

E-HST offers the simplicity and ease of direction change you get with HST – plus the electronic acceleration provides near-effortless input on the travel pedal to control your speed. It works like an automatic transmission in a car. It also includes cruise control to keep you moving at a constant speed.



*Machine: CT4058
Attachment: Pallet Fork
Implement: 3pt Tiller*

PERFORMANCE

3-POINT HITCH AND REAR PTO

The 3-point hitch enables you to do a large number of tasks on your property using the drawbar or PTO-powered implements.

POWERFUL 3-POINT HITCH LIFT CAPACITY

Count on excellent 3-point hitch lift capacities to increase your implement capabilities and improve your performance.

DRAWBAR TOWING POWER

The Bobcat compact tractor's drawbar delivers heavy towing performance. An adjustable hitch provides towing flexibility and convenience.



STANDARD FOUR-WHEEL DRIVE

All Bobcat compact tractors come with standard four-wheel drive so you can easily power through tough terrain.

TIGHT TURNING RADIUS

Bobcat compact tractors feature a tight turning radius – as little as 8 feet, depending on the model – so you can easily move and work close to trees, buildings and other obstacles.

VERSATILITY

THREE TIRE OPTIONS

Turf, industrial and agricultural tires offer a combination of reliability and ride quality to match the requirements of your work.

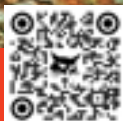
ATTACHMENTS AND IMPLEMENTS

There's no limit to what you can accomplish with your front-end loader with standard quick-attach mounting system for a variety of attachments and implements.

— NOTE: 1000 platform machines come standard with a Category 1 Limited 3-point hitch.



SEE THE FULL COMPACT TRACTOR
LINEUP AT [BOBCAT.COM](https://www.bobcat.com)



VIEW ATTACHMENT SECTION ON PAGES 70-105 FOR MORE
DETAILS AND FULL LIST OF ATTACHMENTS AND IMPLEMENTS.



Machine: CT2025

COMFORT

EXCELLENT VISIBILITY

The compact tractor offers a panoramic view with minimal obstruction and great rear visibility to monitor your implement.

ENCLOSED CAB

A factory-installed, radio-ready enclosed cab with air conditioning and heat on select models keeps you working comfortably in all kinds of weather.

DELUXE SUSPENSION SEAT

The fully adjustable deluxe suspension seat, available on select models, absorbs vibration and bumps to maximize comfort.

INTEGRATED LOADER JOYSTICK LEVER

Select models offer a cab-integrated joystick lever that's within easy reach for simple loader work. It's strategically positioned to maintain comfortable operation.

UPTIME

HEAVY-DUTY BRUSH GUARD

As you maneuver through debris, branches and other obstacles, the brush guard protects your compact tractor's front end. It's included with the front-end loader and also available separately.

METAL HOOD

The streamlined metal hood design improves visibility and reliably protects the engine and components from dirt and debris. Available on 2000, 4000 and 5000 platform models.

ONE-PIECE ENGINE HOOD WITH AIR CYLINDER ASSIST

The hood is easy to lift thanks to the air cylinder assist. When fully opened, the hood stands nearly perpendicular to the engine compartment (on select models).

ONE-SIDE MAINTENANCE

All daily checks, engine fluid fills and filters are located on one side of the engine, making it easy to keep your tractor running smoothly with minimal effort. Available on select models.



Extended warranty available. Learn more.



GO OVER, AROUND AND THROUGH JUST ABOUT ANYTHING.



NEW PRODUCT

The new Bobcat AT450 dominates wherever it goes, whatever the task.

Designed to tackle an endless barrage of to-do's, the Bobcat AT450 includes a revolutionary articulating and oscillating frame that delivers superb ability to navigate rolling terrain and slopes. Quick, easy attachment changes enable you to haul materials, maintain acres of turf or tackle snow for all-year, all-around productivity.

ARTICULATION AND OSCILLATION

The AT450's articulating and oscillating frame enhances traction and maneuverability, enabling the operator to navigate through tight spaces and rough terrain.

ATTACHMENT VERSATILITY

Stay productive all year long with an intuitive quick hitch system and extensive lineup of attachments, including a snowblower, V-blade and a variety of mower decks.

OPERATOR COMFORT

A large platform, conveniently located controls and ergonomically placed foot pegs keep operators comfortable all day (or night).



Machine: AT450
Attachment: AirFX Mower



GET A CLOSER LOOK AT NEW
ARTICULATING TRACTORS ON BOBCAT.COM

VIEW ATTACHMENT SECTION ON PAGES 70-105 FOR MORE DETAILS AND FULL LIST OF ATTACHMENTS.



ARTICULATING TRACTORS



UTILITY VEHICLES

GET A CLOSER LOOK AT
BOBCAT UTVS ON BOBCAT.COM



Machine: UV34
Attachment: Heavy-Duty V-Blade

ALL-OUT PERFORMANCE FOR WHEN YOU'RE ALL ABOUT THE WORK

Go all out and get it all done with Bobcat utility vehicles.

With industry-leading specs, proven durability and comfort features that the hardest-working operators deserve, Bobcat utility vehicles deliver reliable productivity and performance every day.

VISIT YOUR DEALER TO LEARN MORE ABOUT **BOBCAT UTILITY VEHICLES**.



Extended warranty available. Learn more.



KEY FEATURES

TOUGH CHASSIS AND SUSPENSION

A strong, rigid chassis and heavy-duty driveline components ensure better work performance, more durability and increased towing capacity, along with higher ground clearance. Greater range of motion in the suspension provides superior ride quality.

LEADING PAYLOAD AND TOWING CAPACITIES

Haul and pull bigger loads with a payload capacity of 1,250 pounds and a tow rating of 2,500 pounds – the highest payload and tow rating of nearly any brand.

COMPOSITE CARGO BOX

With 15.6 cubic feet of storage space, this cargo box is one of the largest in its class. A rock-solid, one-piece composite material design resists dents, scratches, rust and corrosion.

FAST AND EASY MAINTENANCE

Check the oil without having to raise the cargo box. Fewer grease points and easier access to coolant, air, oil and fuel filters help reduce time spent servicing your machine.

COMFORTABLE CAB

The low and wide cab opening, comfortable seat, three-point seatbelt with comfort strap, tilt steering and more legroom make every minute of your workday more enjoyable. Covered and sealed storage keeps your personal items secure and protected from the elements.

SIMPLE OPERATION

Enjoy intuitive operation with power steering and responsive control, even when loaded with cargo or towing trailers. Ergonomically designed instrumentation and controls plus large, easy-to-read gauges further enhance your experience.

HEAVY-DUTY CLUTCH

The heavy-duty clutch ensures optimal belt engagement to minimize slippage and extend service intervals.

STANDARD LED LIGHTING

Shine a bright path to the work and keep visibility high when operating at night or in low-light areas.

ACCESSORY KITS AND COLLECTIONS

Customize your Bobcat utility vehicle to get the job done – whether you're looking for extra style, added comfort or enhanced productivity. With the help of your local dealer, you can make your machine as unique as you are.



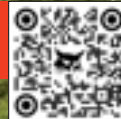
Scan to view accessories.

Machine: UV34XL
Accessories: Hunt Ready Collection



Machine: UW56
Attachment: Pallet Fork

GET A CLOSER LOOK AT
TOOLCAT MACHINES ON [BOBCAT.COM](https://www.bobcat.com)



TOOLCAT UTILITY
WORK MACHINES



LOOKS LIKE NOTHING ELSE. WORKS LIKE NOTHING ELSE.

Meet the master of all trades: the Toolcat utility work machine.

Part pickup truck, compact tractor, skid-steer loader, utility vehicle, and ready to tackle anything. The Toolcat utility work machine is a bold invention for people who have a lot to do and need a machine that can get it done. Whether lifting, hauling, towing or using one of 45+ attachments and implements, this do-it-all machine is in a league of its own.

VISIT YOUR DEALER TO LEARN MORE ABOUT TOOLCAT UTILITY WORK MACHINES.



Extended warranty available. [Learn more.](#)



KEY FEATURES

TWO DRIVE MODES

The drive response system includes two drive modes for the best combination of speed, torque and performance for the task. It's easy to adjust between traveling and working.

4,000 LB. TOWING CAPACITY

Includes a standard 2-inch receiver hitch and a towing capacity of 4,000 pounds for moving trailers, boats and more. Hydrostatic braking and secondary multi-disc wet brakes let you tow with confidence.

COMFORTABLE INTERIOR

Comfort and dash features include heat, air conditioning, an integrated 5-inch display, optional radio, a USB port for charging mobile devices and more.

OPERATOR-FRIENDLY CONTROLS

Controls are ergonomically designed, cleanly laid out and, most importantly, simple to use. In fact, if you've driven an automobile or truck, you'll find the layout and feel very similar but with the added convenience and maneuverability of a joystick.

THE ULTIMATE IN VERSATILITY

HIGH-FLOW HYDRAULICS

Get more performance for jobs requiring high power, like stump grinding, blowing snow and digging postholes. It's standard on the UW53 and available as an option on the UW56.

UW56: HYDRAULIC DUMP CARGO BOX

Quickly unload whatever you're hauling (2,000-pound capacity) without ever leaving the cab with the standard hydraulic dump cargo box on the UW56.

45+ ATTACHMENTS IN FRONT

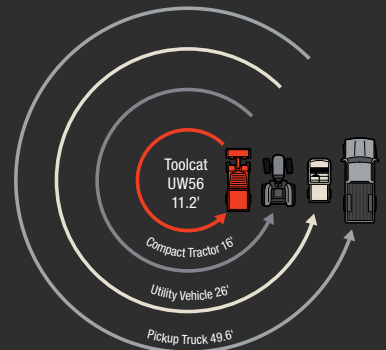
Pair either machine with more than 45 front-mounted attachments and get more work from your equipment investment.

UW53: 3-POINT HITCH AND PTO IN BACK

Unlock even more capability in the Toolcat UW53, which comes standard with a 3-point hitch and power take-off that enables you to use a wide variety of 3-point implements.

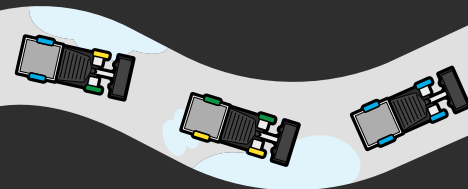
ALL-WHEEL STEER

Each wheel of your Toolcat utility work machine turns separately, resulting in a tight, turf-friendly turning radius of 11.2 feet.



HYDROSTATIC FOUR-WHEEL DRIVE

Get maximum traction. If one wheel loses tractive effort, the wheel with the most traction receives the most torque – without the need to engage any locks, buttons or levers.



YELLOW – REDUCED TRACTIVE EFFORT
GREEN – TRACTIVE EFFORT
BLUE – FULL TRACTIVE EFFORT

Machine: UW53
Attachment: Bucket
Implement: Box Blade



VIEW ATTACHMENT SECTION ON PAGES 70-105 FOR MORE DETAILS AND FULL LIST OF ATTACHMENTS AND IMPLEMENTS.

MANAGE YOUR TOOLCAT UTILITY WORK MACHINE WITH MACHINE IQ.

Ask your dealer about an aftermarket kit. See pages 8-9 for details.



MINI TRACK LOADERS

Machine: MT100
Attachment: Bucket

MINI BUT MIGHTY

Bobcat mini track loaders make quick work of grueling manual tasks.

Mini track loaders take on the biggest tasks with their small size and mighty performance. Popular with landscapers, contractors, rental companies and the tree care industry, this small machine leaves minimal ground compaction no matter the job. With a powerful rated operating capacity of 1,000 pounds, tool-free maintenance access and long-lasting durability, the MT100 gets jobs done where other machines can't.

SEE YOUR DEALER TO GET A CLOSER LOOK AT MINI TRACK LOADERS.



Extended warranty available. Learn more.





SCAN TO SEE THE MT100 IN ACTION.

Machine: MT100
Attachment: Soil Conditioner

KEY FEATURES

EASY OPERATION

The two ISO joystick controls and ergonomic design on the MT100 make it simple and comfortable to operate. Even less experienced equipment operators can get tasks done with ease.

ULTRA-COMPACT SIZE

Only 36 inches wide when paired with a bucket, the smaller size allows it to squeeze through doorways and fence gates, and it's easy to load and transport on a trailer. With optional wide tracks, it's still under 44 inches wide with a bucket, and you get a further reduction in ground pressure and an increase in flotation.

TWO ATTACHMENT MOUNTING SYSTEM OPTIONS

BOB-TACH MOUNTING SYSTEM

The well-known Bob-Tach attachment mounting system supports a comprehensive selection of Bobcat-built attachments, including the Brushcat™ rotary cutter, log grapple, soil conditioner, auger and more.

COMMON INDUSTRY INTERFACE

The common industry interface (CII) uses the smaller face plate and pin-on-style attachment connection solution for using a variety of attachments, including the auger, breaker, trencher and more.

SEALED ROLLERS

The mini track loader's rollers are sealed and bearings are constantly bathed in oil for continuous lubrication. There's no need for undercarriage greasing or daily roller maintenance.

REMOVABLE COUNTERWEIGHTS

Counterweights come standard on the MT100 to increase lifting performance on tough jobs. Counterweights are factory-mounted in the undercarriage but can be moved to the rear of the machine to meet individual needs.



Machine: MT100



SMALL ARTICULATED
LOADERS

Machine: L28
Attachment: Snow Blade



TURN AND BURN THROUGH HEAVY TASKS.

Heavy-lifting ability meets quick-turning agility with Bobcat small articulated loaders.

Small articulated loaders provide precise maneuverability with minimal ground disturbance and operator comfort in an easy-to-use, highly capable, compact package. The unique design offers excellent operating capacity for a compact machine to do a wide variety of jobs, including handling dirt, mulch, brush and other materials in tight areas. From the bucket to the angle broom, snowblower or Brushcat rotary cutter, the small articulated loader brings big versatility for an endless array of tasks.

CONTACT YOUR DEALER OR VISIT [BOBCAT.COM](https://www.bobcat.com) TO REQUEST A **PRICE QUOTE TODAY.**



Extended warranty available. [Learn more.](#)



KEY FEATURES

TELESCOPING LIFT ARM (L28)

Reach higher and farther with a lift arm that extends up to 24 inches. An innovative dual-cylinder design keeps the load level as you move the bucket.

AUTOMATIC TRACTION MODE

Activates one of two traction modes, high traction or turf safe, based on operation to cause the least possible ground disturbance. Optional traction assist allows you to temporarily override the automatic modes and provide power to all wheels.

ARTICULATING JOINT

Enables the rear tires of the loader to match the path of the front tires as they turn, resulting in a highly nimble machine that navigates around obstacles with ease. It also limits cuts or tears in the turf when turning or hauling a load.



Machine: L28
Attachment: Bucket

SCAN TO WATCH THE BOBCAT SMALL
ARTICULATED LOADER WALK-AROUND VIDEO.



Machine: L28
Attachment: Log Grapple

VIEW ATTACHMENT SECTION ON PAGES 70-105
FOR MORE DETAILS AND FULL LIST OF ATTACHMENTS.

LOAD UP WITH OPTIONS.

ADD CAPABILITIES WITH UPGRADE OPTIONS:

- Stay comfortable in cold and wet weather with the optional heated cab enclosure and heated seat.
- Add or remove window panels to further adapt with the season.
- Counterweights add lift capacity when needed.
- Add protection with a rear guard.

ATTACHMENTS

The Bob-Tach attachment mounting system accepts select mini track loader and standard Bobcat attachments. With the optional Power Bob-Tach system, you can change non-hydraulic attachments without leaving the comfort of your cab.

MANAGE YOUR SMALL ARTICULATED LOADER WITH MACHINE IQ.

Ask your dealer about an aftermarket kit. See pages 8-9 for details.

WE HAVE AN ATTACHMENT FOR THAT.®



3-POINT HITCH ADAPTER

Add versatility to your loader or utility work machine.

- Enable the use of Category 1 and 2 implements
- Bob-Tach attachment mounting system offers quick-mounting capabilities
- Adjustable top link for added versatility
- Offers 2-inch receiver for moving trailers

Approved machines: CTL SSL TC



ANGLE BLADE

Level, backfill, grade and remove snow on farms or acreages.

- Blade can be rotated 360 degrees and angled to move material from either side
- Use the blade in forward or reverse
- Replaceable cutting edge

Approved machines: CT

	60 in.	72 in.	84 in.
Weight	308 lb.	332 lb.	348 lb.
Length	40 in.	40 in.	40 in.
Hitch	Category 1	Category 1	Category 1
Offset (Right or Left)	12 in.	12 in.	12 in.

AT = Articulating Tractor CT = Compact Tractor CTL = Compact Track Loader CWL = Compact Wheel Loader MTL = Mini Track Loader MX = Excavator

ANGLE BROOM

Sweep driveways, sidewalks, parking lots and more.

- Waved design of the bristles creates a cleaner path and sweeps more snow or debris in one pass
- Heavy-duty, easy-to-replace polypropylene broom bristles (steel bristles available)
- Reverse bristle rotation available on the 68- and 84-inch angle brooms for enhanced cleaning along curbs, corners and around obstacles
- **NEW:** Also available for articulating tractor

Approved machines: **AT** **CTL** **CWL** **MTL** **SAL** **SSL** **TC**



	52 in.	64 in.	68 in.	84 in.	AT450
Operating Weight	355 lb.	385 lb.	860 lb.	944 lb.	395 lb.
Overall Width	54.5 in.	67.5 in.	79.6 in.	96.4 in.	63 in.
Sweep Width (Straight)	51.5 in.	63.5 in.	68 in.	84 in.	52 in.
Sweep Width (Fully Angled)	48 in.	60 in.	63 in.	77 in.	47 in.
Broom Angling	Hydraulic	Hydraulic	Hydraulic	Hydraulic	25°; Hydro Drive, Oscillation Fixed
Broom Bristle Diameter	26 in.	26 in.	32 in.	32 in.	26 in.
Flow Range	9-18 gpm	9-18 gpm	8-24 gpm	15-28 gpm	—



AUGER

Dig holes with speed and plumb-line accuracy.

- Choose from varying options that offer a choice between torque and rpm
- Multiple bit types and teeth to match your digging conditions
- Exceptional digging depth when paired with Bobcat machines

Approved machines: **CTL** **CWL** **MTL** **MX** **SAL** **SSL** **TL**



	12PH	14PH	20PH	25PH	35PH	50PH
Operating Weight	140 lb.	140 lb.	140 lb.	140 lb.	285 lb.	285 lb.
Length	28 in.	28 in.	28 in.	28 in.	39.7 in.	39.7 in.
Width	10 in.	10 in.	10 in.	10 in.	11.6 in.	11.6 in.
Height	10 in.	10 in.	10 in.	10 in.	11.4 in.	11.4 in.

BACKHOE – COMPACT TRACTOR

Turn your compact tractor into a powerful excavator.

- Use the backhoe for general-purpose digging and trenching
- Sub-frame included to attach to your compact tractor

Approved machines: **CT**



	BH66	BH76	BH86	BH86-5
Shipping Weight (Without Bucket)	657 lb.	880 lb.	1102 lb.	1102 lb.
Digging Depth (2 ft. Flat Bottom)	73 in.	90 in.	96 in.	94 in.
Reach From Swing Center Line	100 in.	122 in.	126 in.	125 in.
Dig Force – Bucket	2240 lbf.	3075 lbf.	3748 lbf.	3532 lbf.
Stabilizer Type	Hydraulic Fold Down	Hydraulic Fold Down	Hydraulic Fold Down	Hydraulic Fold Down

LX = Large Excavator **SAL** = Small Articulated Loader **SSL** = Skid-Steer Loader **TC** = Toolcat Utility Work Machine **TL** = Telehandler **UTV** = Utility Vehicle

Scan the QR codes for additional specifications and metric conversions.



BACKHOE – LOADERS

Handle full-time excavating jobs with a Bobcat loader.

- Operates with minimal ground disturbance
- You can use the same buckets available for excavators
- Clear line of sight from the operator's seat
- Bob-Tach mounting system makes it fast and simple to mount the backhoe to the machine

Approved machines: **CTL** (M-SERIES), **SSL** (M-SERIES)

	7BH	9BH	8811
Operating Weight	1298 lb.	1487 lb.	2012 lb.
Max. Reach	123.6 in.	145.3 in.	166 in.
Dig Force – Bucket	5294 lbf.	5318 lbf.	8611 lbf.
Bucket Pin-On/X-Change	X-Change	X-Change	X-Change
Max. Dig Depth	95.1 in.	116.6 in.	135.7 in.
Stabilizer Type	Hydraulic Vertical	Hydraulic Vertical	Hydraulic Fold Down



BALE FORK

Move and load round, uneven or square bales.

- Bale fork length: 40.8 inches
- Two small-diameter forks penetrate the material
- Mounts to standard or heavy-duty pallet fork attachment frame

Approved machines: **CT** **CTL** **SSL** **TC** **TL**



BOB-TACH BACKHOE

Mount directly to the loader.

No kit or stabilizers required.

- Standard bolt-on X-Change system
- 13-, 16- and 20-inch bucket widths

Approved machines: **CTL** **SSL**

Bob-Tach Mounted Backhoe	
Operating Weight	750 lb.
Max. Dig Depth	72 in.
Max. Reach	77 in.
Swing Angle (Right or Left)	48°



BORING UNIT

Bore without tearing up paved areas.

- Easily install underground cables and flexible pipes
- Bore up to 2 feet deep and 30 feet horizontally
- Install cable or pipe up to 4 inches in diameter
- Side-shift allows operation next to buildings and other obstacles

Approved machines: **MTL** **SAL** **SSL**

Boring Unit	
Operating Weight	130 lb.
Width	36 in.



BOX BLADE – COMPACT TRACTOR

Impressive leveling, backfilling and grading.

- Heavy-duty, rear-mount cutting edges are strong enough to cut into gravel, topsoil or other material
- Adjustable and replaceable ripper shanks break up hard ground or compacted soil for easier moving
- Steel cutting blade edges are reversible and replaceable to increase the life of your implement

Approved machines: **CT**

	48 in.	60 in.	72 in.
Operating Weight	360 lb.	418 lb.	474 lb.
Length	28 in.	31 in.	31 in.
Width	49.5 in.	61.5 in.	73.5 in.



Pictured: Heavy-Duty Box Blade

BOX BLADE – LOADERS

Excel at standard and rough grading projects.

- Available in three models: standard, laser-controlled and heavy-duty
- The attachment's large box and oscillating bolster helps to move more dirt and material on every pass
- HD box blade capable of moving material in either forward or reverse for greater efficiency
- Foam-filled tires eliminate flats
- HD box blade compatible with Trimble® 3D grading systems
- Trimble and TopCon laser receivers offer ± 0.25 -inch accuracy

Approved machines: **CTL** **SSL** **TC**

	Box Blade	HD Box Blade
Operating Weight	980 lb.	1384 lb.
Length	64.3 in.	64.3 in.
Box Blade Moldboard Width (Cutting Width)	84 in.	84 in.



LX = Large Excavator **SAL** = Small Articulated Loader **SSL** = Skid-Steer Loader **TC** = Toolcat Utility Work Machine **TL** = Telehandler **UTV** = Utility Vehicle

Scan the QR codes for additional specifications and metric conversions.



BREAKER, HYDRAULIC

Break concrete faster. Cut through rocks easier.

- Matches hydraulic capacity of the carrier to the breaker for consistent machine-to-breaker performance
- Quieter, smoother operation while maintaining blows per minute
- Automatically regulates pressure regardless of changes in outdoor temperature

Approved machines: CTL MTL MX SAL SSL

	HB680	HB880	HB980	HB1180	HB1380	HB2380
Operating Weight (Without Mounting Frame)	281 lb.	427 lb.	502 lb.	659 lb.	849 lb.	903 lb.
Blows Per Minute (at Max. Flow)	1340	1310	1450	1280	1230	910
Flow Range	7-13 gpm	8-17 gpm	12-21 gpm	15-26 gpm	17-32 gpm	20-33 gpm
Impact Energy Class	150 ft.-lb. (200 J)	300 ft.-lb. (407 J)	500 ft.-lb. (650 J)	750 ft.-lb. (1016 J)	850 ft.-lb. (1152 J)	1000 ft.-lb. (1356 J)
Recommended Working Thickness	2-4 in.	4-10 in.	6-14 in.	8-16 in.	10-18 in.	12-20 in.



BREAKER, NITROGEN

Smash that deadline. Protect that uptime.

- Offers a long piston stroke to maximize impact energy and reduce recoil
- Unique valve design reduces pressure fluctuations and strain on carrier hydraulic pumps
- Only two moving parts, and all grease points are within easy reach

Approved machines: CTL MTL MX SAL SSL

	NB110	NB140	NB150	NB160	NB170	NB180	NB240	NB260
Operating Weight	185 lb.	508 lb.	737 lb.	1002 lb.	1207 lb.	1344 lb.	395 lb.	395 lb.
Blows Per Minute	1300	1022	1075	979	965	1000	63	63
Blows Per Minute Flow	7.9 gpm	13.2 gpm	20.4 gpm	23.3 gpm	21.9 gpm	29 gpm	37 gpm	44.9 gpm
Impact Energy Class	150 ft.-lb.	350 ft.-lb.	550 ft.-lb.	900 ft.-lb.	1200 ft.-lb.	1500 ft.-lb.	2325 ft.-lb.	2500 ft.-lb.



NEW PRODUCT



BRUSH GRAPPLE – COMPACT TRACTOR

Grab bundles of branches, downed trees and other material.

- Large grapple capacity carries more material each cycle
- Easy-to-reach grease points ensure easy maintenance
- Quickly and easily connects to your front-end loader
- Clean hose routing protects components from jobsite hazards

Approved machines: CT

	GR48	GR60
Operating Weight	205 lb.	415 lb.
Overall Width	49 in.	61 in.
Overall Height Closed	32.75 in.	42 in.
Grapple Opening	33 in.	27 in.

AT = Articulating Tractor CT = Compact Tractor CTL = Compact Track Loader CWL = Compact Wheel Loader MTL = Mini Track Loader MX = Excavator



BRUSHCAT ROTARY CUTTER

Cut smoothly on uneven terrain.

- Short deck design reduces weight, increases visibility and allows tighter turning
- Self-adjusting, pivoting flotation linkage minimizes the effect of uneven ground and increases first-pass accuracy
- The high cutting speeds and heavy-duty blades maximize inertia to cut and mulch dense vegetation in one pass
- Dual offset motors provide a clean cut every time (66-80 in.)

Approved machines: **CTL** **MTL** **SAL** **SSL** **TC**

	44 in. (30cc)	54 in. (35cc)	54 in. (50cc)	66 in. Std. Flow	66 in. High Flow	72 in. Std. Flow	72 in. High Flow	80 in. High Flow
Operating Weight	931 lb.	1042 lb.	1042 lb.	1437 lb.	1437 lb.	1500 lb.	1500 lb.	1581 lb.
Overall Width	48 in.	58 in.	58 in.	70.3 in.	70.3 in.	76.3 in.	76.3 in.	84.3 in.
Blade Tip Speed (Max. Flow)	16,595 ft./min.	17,754 ft./min.	17,573 ft./min.	18,238 ft./min.	17,064 ft./min.	17,197 ft./min.	16,536 ft./min.	18,219 ft./min.
Flow Range	9-12.5 gpm	9-12.5 gpm	12-18 gpm	15-24 gpm	24-36 gpm	15-26 gpm	24-40 gpm	24-40 gpm
Cutting Height	3 in.	3 in.	3 in.	3 in.	3 in.	3 in.	3 in.	3 in.
Cutting Capacity Diameter	2 in.	2 in.	2 in.	3 in.	3 in.	3 in.	3 in.	3 in.



HD BRUSH CUTTER

Built to take on brush-clearing jobs, both big and small.

- Reversible cutting direction doubles blade life
- Front push bar keeps material at a distance while the three-blade rotary cutter cuts it down
- Reinforced deck and quick spin-down for increased protection
- High-efficiency hydraulic motors maximize carrier output

Approved machines: **CTL** **SSL**

	62 in. Std. Flow	62 in. High Flow	74 in. Std. Flow	74 in. High Flow	86 in. High Flow
Operating Weight	1950 lb.	1950 lb.	2150 lb.	2150 lb.	2450 lb.
Overall Width	68.9 in.	68.9 in.	80.9 in.	80.9 in.	92.9 in.
Flow Range	17-23 gpm	26-31 gpm	17-23 gpm	26-37 gpm	30-37 gpm
Blade Tip Speed (Max. Flow)	17,907 ft./min.	19,429 ft./min.	17,811 ft./min.	17,005 ft./min.	19,763 ft./min.
Cutting Capacity	10 in.	10 in.	10 in.	10 in.	10 in.



BRUSH SAW

Cut down brush and clear small trees.

- Flow range 15-23 gpm

Approved machines: **CTL** **SSL**

Brush Saw	
Operating Weight	590 lb.
Tip Speed at 22 gpm	3256 ft./min.
Degree of Angle (Right or Left)	12°
Cutting Wheel Diameter	28.5 in.

LX = Large Excavator **SAL** = Small Articulated Loader **SSL** = Skid-Steer Loader **TC** = Toolcat Utility Work Machine **TL** = Telehandler **UTV** = Utility Vehicle

Scan the QR codes for additional specifications and metric conversions.

THE BEST-BUILT BUCKETS IN THE INDUSTRY



Pictured: Heavy-Duty Bucket



**CONTACT YOUR DEALER OR HAVE BUCKETS
SHIPPED DIRECTLY TO YOU AT SHOP.BOBCAT.COM**

BUCKETS – LOADERS

- Standard-duty bucket for lighter-duty jobs
- Heavy-duty bucket for high breakout forces
- Severe-duty bucket for extreme applications
- Light material bucket for snow, mulch or fertilizer
- Combination bucket can be used as a bucket, grapple, dozer and for spreading material
- Rock bucket features gusseted tines and high-steel strength
- Utility bucket for small articulated loaders with see-through back
- Weld-on and bolt-on cutting edges available
- Industrial or general-purpose bucket for mini track loaders
- **NEW:** General-purpose bucket for articulating tractors

Approved machines: AT CTL CWL MTL SAL SSL TC TL



Pictured: Standard Clamp

BUCKET CLAMPS – EXCAVATORS

STANDARD

- Grab, lift, move and place materials
- Easily maneuver in tight spaces to selectively grab objects
- Hydraulically actuated
- Clamp is compatible with extendable arm
- Pair with a trenching bucket or three-tined grapple to move oddly shaped objects

PRO CLAMP SYSTEM

- Adjust the Pro Clamp™ configuration for the job at hand
- Grab large, small or irregular objects with greater grip
- Create a smooth trench bottom with the optional grading tool, avoiding the need for a second “smooth lip” bucket
- Clean up spoil piles quickly with the grading tool and reduce manual labor
- Remove the tool when trenching, giving you enhanced visibility into the trench area

Approved machines: MX

	E20 Class I	E26-E35 Class II	E42 Class III	E42-E63 Class IV	E85 Class VI
Operating Weight	50 lb.	126 lb.	171 lb.	218 lb.	449 lb.
Clamp Width	5.5 in.	13 in.	14.4 in.	15 in.	16.5 in.
Tooth Radius	19.8 in.	27.2 in.	27.2 in.	32 in.	41 in.
Tooth Thickness	0.5 in.	0.75 in.	0.75 in.	1 in.	1 in.

Pro Clamp With Material Clamp

	E32/E35	E42/E45/E50/E55
Operating Weight	189 lb.	295 lb.
Thickness	0.63 in.	1 in.
Number of Teeth	2	2
Teeth Width	13.4 in.	15.9 in.

Pro Clamp With Grading Tool

	E32/E35	E42/E45/E50/E55
Operating Weight	194 lb.	280 lb.
Thickness	0.63 in.	0.63 in.
Cutting Edge Width	24.25 in.	24.25 in.

AT = Articulating Tractor CT = Compact Tractor CTL = Compact Track Loader CWL = Compact Wheel Loader MTL = Mini Track Loader MX = Excavator



Pictured: Heavy-Duty Exchange Grading Bucket

HEAVY-DUTY

Add capacity to move material on a jobsite, or easily finish, grade, backfill or clean ditches.

This attachment can be pinned on, quick coupled or utilized with a thumb. We offer 60-inch grading buckets for both the E145 and E165.

Approved machines: LX MX



BUCKETS, GRADING – EXCAVATORS

STANDARD

Backfill, clean ditches and complete finish grading.

- Features replaceable and reversible cutting edge, increased capacity and no center gusset
- 31-, 36-, 39-, 48- and 60-inch widths
- From Class 0 through Class 6 (E10 – E88)
- Pair with Hydra-Tilt™ or PowerTilt® swing accessories

Approved machines: MX



Pictured: Heavy-Duty Exchange Trenching Bucket

LARGE EXCAVATOR

Makes light work of even the heaviest digging.

- Includes two triangular wear shrouds
- E145 available sizes: 24-, 36- and 42-inch
- E165 available sizes: 36-, 42- and 48-inch

Approved machines: LX

BUCKETS, TRENCHING – EXCAVATORS

HEAVY-DUTY

Dig trenches for water, power and telecommunications projects.

- Cast side cutter provides enhanced durability and functionality
- Weld-on shanks offer strength and durability
- X-Change reinforcement plate (18-inch bucket and up) for severe digging
- Class 0 to Class VI

Approved machines: MX

SEVERE-DUTY

For the most extreme operations.

- Class 5 and 6 buckets fitted with ESCO® ground engagement tools with wrap-around, weld-on shanks
- Class 3 and 4 trenching buckets are available with either ESCO teeth and shanks or our current ground engagement tools

Approved machines: MX

**EXCLUSIVE**

BOB-DOCK ATTACHMENT MOUNTING SYSTEM

Change most hydraulic attachments without stepping outside the cab to remove or connect hoses.

Approved machines: CTL SSL

**SEE IT IN ACTION.**

CHIPPER

Avoid hauling debris. Chip on the spot.

- Ideal for tree pruning and removal, municipalities, parks and recreation, rentals, and personal property maintenance
- Reduces branch volume 10-to-1
- Remote attachment control safely starts and stops the machine and chipper from outside the loader
- Discharge chute rotates 360 degrees; includes adjustable deflector

Approved machines: CTL SSL TC

	5A	8B
Operating Weight	1145 lb.	1660 lb.
Continuous Chipping Size	Up to 3 in. diameter material	Up to 5 in. diameter material
Feeder Opening	5 in.	9.2 in.
Dual Mounting Locations	Front or right side of loader	Front or right side of loader
Flow Range	26-40 gpm	26-40 gpm



CONCRETE MIXER

Mix concrete wherever, whenever.

- Transports, mixes and dumps concrete faster
- Perfect for sidewalks, driveways, finish work, fence posts and footings
- Drum rotates in either direction for superior mixing
- Remote attachment control safely starts and stops the machine and concrete mixer from outside the loader

Approved machines: CTL SSL

Concrete Mixer	
Operating Weight	440 lb.
Rotation	Bi-rotational
Capacity	6.9 cu. ft.
Recommended Drum Speed	20 rpm
Flow for Recommended Drum Speed	11 gpm

AT = Articulating Tractor CT = Compact Tractor CTL = Compact Track Loader CWL = Compact Wheel Loader MTL = Mini Track Loader MX = Excavator



Concrete Pump

Operating Weight	2200 lb.
Max. Aggregate Size	1.5 in.
Max. Concrete Pressure	750 psi
Vertical Pumping Height	50 ft.
Horizontal Pumping Distance	250 ft.
Hopper Capacity	10 cu. ft.

CONCRETE PUMP

Easily pour concrete in difficult-to-reach areas.

- Standard-flow loaders place up to 18 cubic yards per hour
- High-flow loaders place up to 30 cubic yards per hour
- Dual mounting positions allow the hopper to be placed on the right or left side of the loader
- Start the pump without entering the loader with the remote control kit

Approved machines: **CTL** **SSL**



DIGGER

Save time with powerful forward and reverse digging.

- Remove rocks and stumps
- Transplant trees and shrubs
- Prune roots, dig trenches or loosen hard-packed soil
- Open frame design for greater visibility from inside the cab
- Replace the shovel; save time and manual labor

Approved machines: **CTL** **MTL** **SAL** **SSL**

	12S	25 in.	30 in.	36 in.
Operating Weight	200 lb.	290 lb.	307 lb.	325 lb.
Cutting Width of Digger	12 in.	25 in.	30 in.	36 in.
Dig Depth	28 in.	48 in.	48 in.	48 in.



NEW PRODUCT



DISC MULCHER*

Cut and mulch trees with impressive speed.

- Mulch trees and brush up to 6 inches in diameter
- Cut trees up to 14 inches in diameter
- Flywheel design maintains disc speed to slice material and mulch effectively

Approved machines: **CTL** **SSL**

*Forestry Applications Kit required

	48DCM-G88	48DCM-G103	60DCM-G132	60DCM-P124
Overall Width	63.1 in.	63.1 in.	77.2 in.	77.2 in.
Operating Weight	1625 lb.	1625 lb.	2100 lb.	2115 lb.
Motor Package	5.4 cu. in.	6.3 cu. in.	8.1 cu. in.	7.65 cu. in.
Hydraulic Flow Range	23-29 gpm	30-37 gpm	32-45 gpm	32-45 gpm

LX = Large Excavator **SAL** = Small Articulated Loader **SSL** = Skid-Steer Loader **TC** = Toolcat Utility Work Machine **TL** = Telehandler **UTV** = Utility Vehicle

Scan the QR codes for additional specifications and metric conversions.



DOZER BLADE

Turn your machine into a mini dozer.

- Push large amounts of material quickly and easily
- Adjustable skid shoes provide depth control and forward and reverse grading
- Reversible cutting edge adds versatility and increases uptime
- 96-inch dozer blade model features all-cast design for maximum strength and productivity

Approved machines: **CTL** **MTL** **SSL** **TC**

	54 in.	80 in.	90 in.	96 in.
Operating Weight	310 lb.	950 lb.	987 lb.	1580 lb.
Working Width (Fully Angled)	46.8 in.	69.3 in.	78 in.	83.5 in.
Angle (Right or Left)	30°	30°	30°	30°
Oscillation	0°	8°	8°	10°



DRUM MULCHER – LOADERS*

Shred trees and overgrowth into mulch.

- Features high-strength, steel-body construction for leading durability and performance
- Select drum mulchers feature a depth control rotor for a more efficient bite into trees up to 8 inches in diameter
- Standard 2-speed hydraulic motor for increased drum torque and quicker drum speed recovery – single-speed option available
- Heavy-duty carbide teeth rip through hard and soft woods, providing long life and uptime protection
- Hydraulic drum brake brings drum rotation to a stop quickly after deactivating the auxiliary hydraulics
- Available in high-flow and super-flow configurations

Approved machines: **CTL** **SSL**

*Forestry Applications Kit required

	50 in. (2-speed)	50 in. (2-speed DCR)	61 in. (1-speed)	61 in. (2-speed)	61 in. (2-speed DCR)	72 in. (2-speed)
Operating Weight With Drum Option	2350 lb.	2514 lb.	2500 lb.	2525 lb.	2819 lb.	3140 lb.
Number of Teeth	24	20	30	30	24	36
Tree Diameter: Continuous Use	5 in.	5 in.	5 in.	5 in.	5 in.	5 in.
Tree Diameter: Intermittent Removal	9 in.	9 in.	9 in.	9 in.	9 in.	9 in.
Tree Diameter: Occasional Removal	12 in.	12 in.	12 in.	12 in.	12 in.	12 in.
Max. Hydraulic Flow	45 gpm	45 gpm	40 gpm	45 gpm	45 gpm	45 gpm
Max. Hydraulic Pressure	4000 psi	4000 psi	4000 psi	4000 psi	4000 psi	4000 psi

DCR = Depth Control Rings Drum



NEW PRODUCT



DRUM MULCHER – COMPACT EXCAVATOR

Efficiently cut trees and brush up to 5 inches in diameter.

- Split ring rotor with bite control maximizes mulching efficiency
- Well-designed processing chamber reduces mulch size
- Easy serviceability with two grease ports, motor access cover and side cover

Approved machines: **MX**

	28DMX	36DMX	50DMX
Working Width	28.38 in.	36.13 in.	50.13 in.
Overall Width	39.44 in.	44.68 in.	58.68 in.
Hydraulic Flow Range	16-40 gpm	20-40 gpm	25-40 gpm
Weight*	750 lb.	850 lb.	1050 lb.

*Weight does not include hoses or mounting caps.



DROP HAMMER

Break and demolish concrete.

- Delivers more than 3,600 foot-pounds of impact energy combined with a fast cycle time of 20 blows per minute
- Fractures the material below the surface, leaving the surface free of jagged debris
- Generates little vibration or noise compared to standard hydraulic breakers, meaning less wear on the machine and less noise for operator and bystanders

Approved machines: **CTL** **SSL**



DUMPING HOPPER

Move material where dump trucks can't.

- Mounts easily onto Bobcat loaders for transportation to jobsites
- Can be loaded, parked, detached from power unit, filled, reattached and driven to dumpsite
- Large-capacity hopper empties quickly and easily
- Caster wheel design with flotation tires supports the dumping hopper on uneven terrain

Approved machines: **CTL** **SAL** **SSL** **TC**

	Model 10	Model 25
Operating Weight	665 lb.	1190 lb.
Capacity (Struck)	25.7 cu. ft.	67.5 cu. ft.
Capacity (Heaped)	29.7 cu. ft.	87.9 cu. ft.

LX = Large Excavator **SAL** = Small Articulated Loader **SSL** = Skid-Steer Loader **TC** = Toolcat Utility Work Machine **TL** = Telehandler **UTV** = Utility Vehicle

Scan the QR codes for additional specifications and metric conversions.



FC200	
Operating Weight	1640 lb.
Cutting Width	78 in.
Cutting Height Range	1.5-3 in.



NEW PRODUCT



FLAIL CUTTER

Clear brush and small trees.

- Variable displacement motor matches attachment to carrier's capabilities
- Three cutting heights for a variety of terrains and brush types
- Produces fine mulching action and minimizes bunching of thick brush
- Thick steel deck design protects the attachment and provides maximum strength

Approved machines: **CTL** **SSL** **TC** **TL**

FC200	
Cutting Capacity	Brush material up to 3 in. diameter
Blade Tip Speed @ 2200 rpm	9000 ft./min.
Flow Range	17-40 gpm

FLAIL MOWER – ARTICULATING TRACTOR

Cut through tall, heavy grass and brush.

- Quick hitch attachment system for easy installation or removal in minutes without any tools
- Rubber guarding for debris retention
- Two different knife options to transition from rough cutting to finish cutting

Approved machines: **AT**

AT450 Flail Mower	
Operating Weight	490 lb.
Cutting Width	72 in.
Overall Width	78.7 in.
Height of Cut Range	1 in.-3 in. in 0.5 in. increments

FLAIL MOWER – EXCAVATOR

Cut down brush, grass, small trees and more.

- Triple-knife flails rip through hard and soft wood
- Includes chains to help contain debris
- Direct-drive hydraulic motor expertly balances torque and rpm
- Three models available for cab-equipped excavators only

Approved machines: **MX** (E32 – E88)

	30 in.	40 in.	40 in.
Operating Weight With X-Change Mount	649 lb.	736 lb.	881 lb.
Operating Weight With Pin-On Mount	–	708 lb.	876 lb.
Flow Range	12.2-19.5 gpm (46-74 L/min.)	14-22.4 gpm (53-85 L/min.)	18.4-31.7 gpm (70-120 L/min.)
Number of Knives	27	36	36
Max. Cutting Capacity	4 in.	4 in.	4 in.

AT = Articulating Tractor **CT** = Compact Tractor **CTL** = Compact Track Loader **CWL** = Compact Wheel Loader **MTL** = Mini Track Loader **MX** = Excavator



FRONT-END LOADER

Does the digging and hauling for you.

- Digging, moving dirt, loading and carrying material
- Easy to attach and remove
- Delivers leading lift capacity and height
- Five models available with standard bucket included
- FL6 (48 in.), FL7 (60 in.), FL8 (60 in.), FL9 (66 in.) and FL9-5 (72 in.)

Approved machines: **CT**



GRADER

Grade with consistent precision and control.

- Bolster oscillates to minimize the effect of uneven ground
- Proportional hydraulic valve offers precise blade control
- Automatic grade control options include 3D-Ready, Laser and Sonic/ Slope Tracer
- Compatible with Trimble and TopCon laser receivers so you can achieve ± 0.25 -inch accuracy or better

Images are not to scale; grader is larger than other attachments pictured on this page.

Approved machines: **CTL** **SSL** **TC**

	84 in.	96 in.	108 in.
Operating Weight	1375 lb.	2788 lb.	2861 lb.
Length	94.5 in.	104 in.	104 in.
Blade Offset (Right or Left)	12 in.	13 in. (Hydraulic)	13 in. (Hydraulic)
Moldboard Angle (Right or Left)	25°	30°	30°
Width of Moldboard (Fully Angled)	76.1 in.	83.3 in.	93.7 in.
Max. Cut Depth	114 mm	188 mm	188 mm
Number of Cylinders	3	5	5



GRADING BLADE

Expertly grade no matter the terrain.

- Pair with Hydra-Tilt or PowerTilt swing accessories
- Excellent for backfilling trenches and leveling terrain
- Grade a wide variety of landscapes
- Shape drainage swales to minimize runoff or capture stormwater

Approved machines: **MX**

Grading Blade, X-Change	55 in.
Operating Weight	320 lb.
Width	55 in.
Height	14 in.

LX = Large Excavator **SAL** = Small Articulated Loader **SSL** = Skid-Steer Loader **TC** = Toolcat Utility Work Machine **TL** = Telehandler **UTV** = Utility Vehicle

Scan the QR codes for additional specifications and metric conversions.



GRAPPLE, 3-TINED

Grab, pick and place bulky material with powerful bite.

- Three-tine design lifts and moves large and hard-to-manage materials
- Move brush, logs and landscaping stones
- Ideal for land clearing, landscaping, demolition, construction, and buildings and grounds maintenance

Approved machines: **MX**

	Class III	Class IV
Operating Weight	200 lb.	225 lb.
Width	20.5 in.	20.5 in.
Number of Grapple Tines	3	3
Mount	X-Change	X-Change



GRAPPLE, INDUSTRIAL

Get a grip on bulky material and oddly shaped objects.

- Dual cylinders on larger models offer a secure grip on uneven loads
- Removable hose guide offers easy hose routing when grapple is attached
- **A BOBCAT-EXCLUSIVE DESIGN:** Recently optimized for improved performance, the inertia-welded cylinder ends deliver strong, smooth operation through improved hydraulic cushioning at the end of the stroke
- Bobcat tines are backed by more steel and greater reinforcement

Approved machines: **CTL** **CWL** **MTL** **SAL** **SSL** **TC** **TL**

	Bucket							Fork		
	36 in.	48 in.	62 in.	68 in.	74 in.	80 in.	86 in.	66 in.	78 in.	86 in.
Operating Weight	365 lb.	448 lb.	884 lb.	922 lb.	960 lb.	1101 lb.	1302 lb.	937 lb.	1218 lb.	1293 lb.
Number of Fork Teeth (Factory)	—	—	—	—	—	—	—	7	8	9
Number of Fork Teeth (Possible)	—	—	—	—	—	—	—	13	15	17
Number of Grapple Tines	1	1	2	2	2	2	2	2	2	2



GRAPPLE, LOG

Lift and move logs, fallen trees and other heavy-duty material.

- Reinforced tines provide powerful and lasting grip on logs and brush
- Integrated tree pusher assists in felling branches, stems or trees in the intended direction
- Heavy-duty teeth help stabilize logs of all sizes during operation

Approved machines: **MTL** **SAL**

	56 in.
Operating Weight	335 lb.
Length	34.8 in.
Width	39.2 in.
Height	39 in.



GRAPPLE, ROOT

Rip through tough land-clearing jobs.

- Curved skeletal tooth design picks up material without driving teeth into the ground
- Dirt falls between teeth to minimize topsoil removal for lighter and fewer loads
- Fully enclosed mounting frame extends wear life by minimizing frame area flexing
- **A BOBCAT-EXCLUSIVE DESIGN:** Recently optimized for improved performance, the inertia-welded cylinder ends deliver strong, smooth operation through hydraulic cushioning at the end of the stroke
- Dual grapple action on larger models offers a secure grip on uneven loads

Approved machines: CTL MTL SAL SSL TC TL

	36 in.	48 in.	66 in.	72 in.	80 in.	86 in.
Operating Weight	316 lb.	395 lb.	999 lb.	1049 lb.	1164 lb.	1181 lb.
Number of Grapple Tines	1	1	2	2	2	2



GRAPPLE, UTILITY

Grab onto loose, hard-to-handle material.

- Add to a utility fork, general purpose bucket, low-profile bucket or construction/industrial bucket for more holding ability
- Curved teeth deliver efficient scooping capabilities for the loosest materials
- Forged teeth provide exceptional strength with low weight, increasing carrying capacity
- Quickly and easily add more teeth to efficiently handle smaller materials

Approved machines: CT CTL MTL SAL SSL TC

Grapple – Add to bucket/forks	32 in. GP	32 in. Utility	55 in. GP	55 in. Utility
Operating Weight	157 lb.	157 lb.	180 lb.	243 lb.
Number of Grapple Tines	3	3	4	4



HYDRATILT SWING ACCESSORY

Save time on grading with added accessory efficiency.

- Mounts between the excavator's bucket and the arm
- Angles the bucket 30 degrees to either side
- Work efficiently when creating slopes, cutting or cleaning drainage ditches, grading, and contouring with reduced repositioning

Approved machines: MX

Hydra-Tilt - MX	
Operating Weight	250 lb.
Side-to-Side Rotation	60°
Output Torque @3000 psi	3210 ft.-lb.

LX = Large Excavator SAL = Small Articulated Loader SSL = Skid-Steer Loader TC = Toolcat Utility Work Machine TL = Telehandler UTV = Utility Vehicle

Scan the QR codes for additional specifications and metric conversions.



HYDRAULIC QUICK COUPLER

Change attachments from the security of the large excavator cab.

- Pin grabber style only releases in a curled position to ensure secure coupling
- No grease points for minimal maintenance

Approved machines: **LX**



NEW PRODUCT



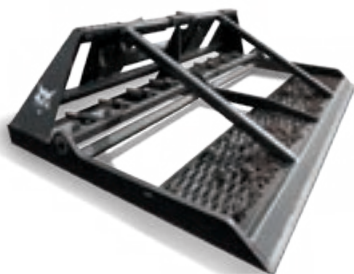
HYDRAULIC TILT COUPLER

Save time and effort on the jobsite.

- Increases operator productivity
- Protected hose routing minimizes snags, damage and downtime
- No exposed cylinders or hydraulics for the ultimate in durability

Approved machines: **MX**

	TC08	TC14
Operating Weight	549 lb.	822 lb.
Side-to-Side Rotation	180°	134°



LANDPLANE

Simplify grading, leveling, aerating, pulverizing and transporting material.

- Use it moving forward for aggressive cutting and sod-peeling
- Travel in reverse for more controlled cutting and finishing work
- Easily loosen stubborn soils with the bi-directional scarifier
- Removable metal grate efficiently breaks clumps

Approved machines: **CTL** **CWL** **MTL** **SAL** **SSL** **TC**

	48 in.	72 in.	78 in.
Operating Weight	390 lb.	680 lb.	700 lb.
Length	46.6 in.	51.5 in.	51.5 in.
Working Depth – Scarifier	3 in.	3.5 in.	3.5 in.



LANDSCAPE RAKE

Get the perfect finish for your jobsite.

- Rake and collect surface debris while smoothing and leveling soil
- Picks up rocks 3/4 inches and larger and most 1/2-inch rocks
- When full, dump the debris for a completely clean finish
- Hardened teeth offer maximum uptime protection
- Side skis provide adjustable depth control

Approved machines: **CTL** **SSL** **TC**

	5B	6B
Operating Weight	1109 lb.	1237 lb.
Working Width	60 in.	72 in.
Number of Tooth Bars	12	12
Number of Teeth (Total)	384	456
Bucket Capacity	12.1 cu. ft.	14.3 cu. ft.



NEW PRODUCT



MOWER DECK, FINISH, AirFX

Get an unparalleled quality of cut with your AT450 articulating tractor.

- Powerful vacuum lifts grass for superior results
- Bolt-on baffle system enables swift replacement and ensures consistent and reliable performance
- Adjust and transport effortlessly with the hydraulic lift

Approved machines: **AT**

	61 in.	72 in.
Operating Weight	540 lb.	600 lb.
Cutting Width	61 in.	72 in.
Overall Width	76.5 in.	86.9 in.
Height of Cut Range	1 in.-5 in. in 0.5 in. increments	1 in.-5 in. in 0.5 in. increments



MOWER, FINISH

Professional results in less time.

- Rear discharge and solid rubber tires are standard
- Three cutting blades
- 1.5- to 4.5-inch cutting height
- Available in 60- and 72-inch cutting widths

Approved machines: **CT**



MOWER – LOADERS

Deliver consistently close, clean cuts.

- Oscillation allows the deck to float, providing a clean cut – even on uneven terrain
- Front-mounted mower eliminates flattened grass before the cut
- Anti-scalping wheel protects blades and mower deck for a longer blade life and consistent cutting height

Approved machines: **CTL** **SSL** **TC**

	72 in.	90 in.
Operating Weight	880 lb.	990 lb.
Cutting Height Range	2 in.-5.5 in. in 0.5 in. increments	2 in.-5.5 in. in 0.5 in. increments
Number of Blades	3	3
Flow Range	15-22 gpm	15-22 gpm
Tip Speed @ 22 gpm	16,502 ft./min.	16,172 ft./min.



MOWER, MID-MOUNT

Turn your compact tractor into a mowing powerhouse.

- Rugged, convenient drive-over deck for easy installation and removal
- Three blades travel at high speeds for a clean, smooth cut without skips
- Standard side discharge and solid rubber tires
- 1- to 4-inch height adjustment

Approved machines: **CT**

	60 in.
Operating Weight	375 lb.
Overall Width	74.1 in.
Blade Tip Speed	256 ft./s
Drive System	PTO



NEW PRODUCT



MOWER, ROUGH CUT

Evenly mow tall grass and thick, woody overgrowth.

- Quickly cuts through tall grass and challenging vegetation
- 72-inch working width allows you to power through fields, farmland and wooded areas with remarkable ease
- Effortlessly mow down woody overgrowth up to 1.5 inches in diameter

Approved machines: **AT**

	Rough Cut Mower
Operating Weight	515 lb.
Cutting Width	72 in.
Overall Width	76 in.
Cutting Capacity Diameter	1.5 in.



PACKER WHEEL

Compact trenches without auxiliary hydraulics.

- Open-rim sheep-foot design compacts the soil from the bottom up
- Equipped with X-Change mounting system for use with excavators
- Approved for use with backhoe attachments for certain loader models

Approved machines: **CTL** **MX** **SSL**

Packer Wheel	
Operating Weight	386 lb.
Width	11 in.
Wheel Assembly	2
Wheel Diameter	30 in.
Sheepfoot (Hollow Tube)	18 (9 per wheel)



PALLET FORK

Save time lifting, carrying and moving materials.

- Integrated, walk-through frame provides easier entry and exit
- Pallet fork meets ISO 2330:2002 standards for yield and fatigue tests
- Teeth available in 42- and 48-inch lengths; bale forks available in 40.8-inch length
- Hydraulic fork positions tines without the need to leave the cab, saving time and effort

Approved machines: **CT** **CTL** **CWL** **SAL** **SSL** **TC** **TL**

	MT Frame	48 in. Hydraulic	4K Heavy-Duty Frame	5.5K Severe-Duty Frame	CWL Frame
Operating Weight	252 lb.	565 lb.	337 lb.	467 lb.	238 lb.
Frame Weight	105 lb.	267 lb.	153 lb.	229 lb.	—
Fork Width	4 in.	4 in.	4 in.	4 in.	—
Number of Teeth	2	2	2	2	—

	TL – 48 in. Floating Pin Carriage	TL – 44 in. Wide Floating	TL – 56 in. Wide Floating	TL w/Back	TL w/Back & Sideshift
Operating Weight	—	933 lb.	683 lb.	717 lb.	893 lb.
Frame Weight	492 lb.	617 lb.	683 lb.	717 lb.	893 lb.
Fork Width	5 in.	4 in.	4 in.	4 in.	4 in.
Number of Teeth	2	2	2	2	2

LX = Large Excavator **SAL** = Small Articulated Loader **SSL** = Skid-Steer Loader **TC** = Toolcat Utility Work Machine **TL** = Telehandler **UTV** = Utility Vehicle

Scan the QR codes for additional specifications and metric conversions.



PLANER

Efficiently cut and mill concrete or asphalt.

- Ideal for street repairs, matching uneven pavement surfaces, cutting drainage in parking lots and cleaning up around larger milling machines
- Multiple drum types and sizes are available for most planers
- High-flow planers increase hydraulic horsepower for higher production
- Standard hydraulic side lifts get you closer to curbs and walls
- Available in standard, high-flow and super-flow configurations

Approved machines: **CTL** **SSL**

	14 in. Std. Flow	18 in. High Flow	24 in. High Flow	40 in. High Flow	24 in. Super Flow	48 in. Super Flow
Operating Weight	1107 lb.	1191 lb.	1254 lb.	2300 lb.	2204 lb.	2660 lb.
Max. Cutting Depth	6 in.	6 in.	6 in.	5 in.	6 in.	5 in.
Sideshift	29.8 in.	29.8 in.	29.8 in.	25.6 in.	25.6 in.	24 in.
Max. Cutting Angle	7°	7°	7°	8°	8°	8°
Flow Range	15-27 gpm	22-40 gpm	22-40 gpm	29-50 gpm	29-50 gpm	29-50 gpm



PLATE COMPACTOR

Compact trenches without leaving the cab.

- Eliminates the need for a worker in the trench
- Easily pack material in hard-to-reach areas
- Shock mounts distribute vibrations for level and efficient compacting

Approved machines: **MX**

	PCF34	PCF64
Operating Weight	478 lb.	856 lb.
Dynamic Force	3400 lb.	6400 lb.
Frequency	2100 vpm	2000 vpm
Flow Range	12-28 gpm	12-28 gpm



NEW PRODUCT



POWER ANGLE BLADE

Power through dirt, gravel or snow.

- Ruggedly built hydraulic cutting blade and reversible cutting edge
- Equipped with trip protection to reduce hang-ups when plowing
- Locking pin prevents folding back when dozing

Approved machines: **AT**

Power Angle Blade	
Operating Weight	195 lb.
Length	32 in.
Height	19 in.
Hydraulic Angling (Right or Left)	30°



POWERTILT SWING ACCESSORY

Expertly dig under and around objects.

- Tilt the bucket instead of moving the entire excavator
- Offers up to 90 degrees of tilting motion to either side
- X-Change mounting system makes easy work of attaching and detaching the PowerTilt swing accessory

PowerTilt® is a registered trademark of the Helac Corporation.

Approved machines: **MX**

	PTX3	PTX4
Operating Weight	170 lb.	285 lb.
Side-to-Side Rotation	178°	180°
Output Torque @3000 psi	2100 ft.-lb.	3250 ft.-lb.



QUICK HITCH

Connect implements in seconds.

- Saves time and makes 3-point implement hookup easier
- Back up your tractor, lift up your quick-hitch-compatible implement and secure the top levers

Approved machines: **CT**



REAR BALLAST BOX

Maximize lifting capacities.

- Easily removed when you plan to use other implements
- Compact size enables convenient storage when not in use

Approved machines: **CT**



REAR STABILIZER

More force to power through any dig.

- Frame-mounted at the rear of the loader
- Transfers the weight of the loader to the attachment, providing more force
- Street pads protect sensitive surfaces from damage
- Grouser bars prevent loader from being pulled toward the work area

Approved machines: **CTL** **SSL**



RIPPER

Effortlessly tear through soil and frozen ground.

- Gussets provide substantial ripping power
- Heavy-duty shank reinforces structure for maximum durability
- Replaceable single-point tooth designed for optimum penetration

Approved machines: **MX**

	X-Change	Pin-On
Operating Weight	255 lb.	255 lb.
Tooth Radius	36 in.	36 in.
Shank Thickness	1.5 in.	1.5 in.



ROCK BUCKET

Collect rocks and debris while leaving soil behind.

- Tines are interconnected for additional strength
- All components are made of high steel strength for durability
- Operates above ground to remove surface vegetation
- Operates below ground to remove submerged objects

Approved machines: **CT** **CTL** **CWL** **SSL** **TC** **TL**

	62 in.	68 in.	74 in.	82 in.
Operating Weight	558 lb.	605 lb.	652 lb.	700 lb.
Number of Tines	17	19	21	23
Tine Thickness	0.4 in.	0.4 in.	0.4 in.	0.4 in.



ROTARY CUTTER, 3-POINT

Clear pastures, ditches and overgrown paths.

- Ideal for clearing undeveloped property, trails and ditches
- 1.5- to 9-inch adjustable cutting height
- Available in 48-, 60- and 72-inch cutting widths

Approved machines: **CT** **TC** **UTV**



SCARIFIER

Dig hard-packed soil and rip up asphalt.

- Mounted on the front of the loader
- Operates when loader is in reverse
- Manual lock holds teeth in position for steady results
- Set the digging depth with adjustable depth skis

Approved machines: **CTL** **SSL**

Front Mount	
Operating Weight	350 lb.
Width	60 in.
Max. Dig Depth	6 in.
Number of Teeth	5



SCRAPER

Eliminate packed-on or built-up materials.

- Easily break packed materials to leave a smooth surface
- Remove mud, snow, ice and even carpet and floor tiles
- Self-sharpening cutting edge easily peels beneath material for removal

Approved machines: **CTL** **SSL** **TC** **TL**

Scraper	
Operating Weight	172 lb.
Length	55 in.
Disk Diameter	22 in.



SEEDER

Precisely place seed at the perfect depth and spacing.

- Covers over 2 acres per hour
- Ground-driven unit seeds directly into soil for better germination and precise coverage
- Front roller firms ground, presses small rocks beneath the surface and plants the seed into the seedbed
- Second roller gently forms soil around seed for optimum seed-to-soil contact

Approved machines: **CT** **CTL** **SSL** **TC**

72 in.	
Operating Weight (Empty)	1300 lb.
Operating Weight (Full)	1425 lb.
Overall Width	88 in.
Working Width	72 in.
Hopper Capacity	4 bushel

LX = Large Excavator **SAL** = Small Articulated Loader **SSL** = Skid-Steer Loader **TC** = Toolcat Utility Work Machine **TL** = Telehandler **UTV** = Utility Vehicle

Scan the QR codes for additional specifications and metric conversions.



SILT FENCE INSTALLER

Place and secure silt fence at an astonishing rate.

- Covers thousands of feet per hour
- Optional side-shift helps you maneuver close to obstacles

Approved machines: **CTL** **SSL**

	Loader or 3-pt.
Operating Weight	775 lb.
Length	72.8 in.
Width	45.5 in.
Height	70 in.



SNOW BLADE

Unrivalled speed for light and moderate snow removal.

- Optional end wing kit converts some models into a snow pusher
- Heavy-duty snow blade offers 5 degrees of oscillation left or right for cutting-edge maneuverability

Approved machines: **CT** **CTL** **CWL** **MTL** **SAL** **SSL** **TC** **TL**

	54 in.	60 in.	72 in.	84 in.	96 in.	86 in. Heavy-Duty	96 in. Heavy-Duty	108 in. Heavy-Duty
Operating Weight	310 lb.	580 lb.	590 lb.	620 lb.	660 lb.	809 lb.	867 lb.	948 lb.
Degree of Angle (Right or Left)	30°	30°	30°	30°	30°	30°	30°	30°
Working Width (Fully Angled)	46.8 in.	52 in.	63 in.	73 in.	83 in.	75 in.	83 in.	93 in.
Cutting Edge (Steel)	0.38 x 4 in.	0.38 x 6 in.	0.38 x 6 in.	0.38 x 6 in.	0.38 x 6 in.	0.5 x 6 in.	0.5 x 6 in.	0.5 x 6 in.
Optional Rubber Cutting Edge	1 x 5 in.	1 x 6 in.	1 x 6 in.	1 x 6 in.	1 x 6 in.	1 x 6 in.	1 x 6 in.	1 x 6 in.



SNOW V-BLADE

Clear deep drifts of snow without leaving the cab.

- Scoop blade collects and holds snow for transportation
- V-blade quickly cuts initial pathways through deep, heavy or hard-packed snow
- Angle blade quickly and easily moves snow left or right
- Straight blade gives maximum width for piling snow and cleaning light snow cover
- **NEW:** Also available for articulating tractor

Approved machines: **AT** **CTL** **SAL** **SSL** **TC** **TL**

	60 in.	72 in.	84 in.	96 in.	108 in.	AT450
Operating Weight	660 lb.	738 lb.	779 lb.	824 lb.	868 lb.	248 lb.
Working Width – Straight Blade	62 in.	74 in.	86 in.	98 in.	110 in.	58 in.
Working Width – V-Blade	54 in.	64.5 in.	75 in.	85.5 in.	96 in.	53 in.
Working Width – Scoop Blade	53 in.	63 in.	74 in.	84 in.	95 in.	49 in.
Working Width – Angled Blade	54 in.	64 in.	75 in.	85 in.	95 in.	58 in.

AT = Articulating Tractor **CT** = Compact Tractor **CTL** = Compact Track Loader **CWL** = Compact Wheel Loader **MTL** = Mini Track Loader **MX** = Excavator



NEW PRODUCT



Pictured: Heavy-Duty V-Blade

HEAVY-DUTY STRAIGHT BLADE

Plow through deep drifts to clear snow from sidewalks, walkways, driveways and more.

- Easy to install and remove
- Hand-held controller easily raises, lowers and angles blade
- 350 pounds of down pressure provides superior backdragging performance
- Direct lift eliminates bouncing during travel

Approved machines: **UTV**

SNOW BLADES – UTILITY VEHICLE

HEAVY-DUTY V-BLADE

Handle a wide variety of snow removal needs with five adjustable configurations.

- In the straight-blade position, operators can clear a swath of snow 72 inches wide
- In the V position, operators can choose between a wide setting (66 inches) and a narrow setting (60 inches)
- Double-acting angle cylinders allow for easy, independent wing adjustment
- Direct lift eliminates bouncing during travel

Approved machines: **UTV**

MID-DUTY STRAIGHT BLADE

Get cost-effective and productive plowing performance.

- Easy to install and remove
- Lighter-weight option that consumes minimal power and excels at light snow clearing
- Sway frame keeps the blade centered for easy maneuverability and great results
- Direct lift eliminates bouncing during travel

Approved machines: **UTV**



SNOWBLOWER, 3-POINT – COMPACT TRACTOR

Powerful, productive and easy to operate.

- Perfect for clearing driveways, sidewalks or parking lots
- Manual chute rotator standard
- Hydraulic chute rotator optional for tractors
- Available in 50-, 60-, 66- and 74-inch widths

Approved machines: **CT**



NEW PRODUCT



SNOWBLOWER – ARTICULATING TRACTOR

Clear a 48-inch path in deep snow with this commercial-grade attachment.

- Opening size of 27 inches by 48 inches allows for quick and effective snow removal
- Serrated auger, 16 inches in diameter, delivers superior performance with its open center design
- Achieve precise snow discharge control with the 7-inch diameter chute and 223 degrees of rotation
- Easily adjust the height of cutting edge with the adjustable skid shoes

Approved machines: **AT**

LX = Large Excavator **SAL** = Small Articulated Loader **SSL** = Skid-Steer Loader **TC** = Toolcat Utility Work Machine **TL** = Telehandler **UTV** = Utility Vehicle

Scan the QR codes for additional specifications and metric conversions.



SNOWBLOWER, FRONT-MOUNT – COMPACT TRACTOR

Powerful, productive and easy to operate.

- Perfect for clearing driveways, sidewalks or parking lots
- Hydraulic chute rotator standard

Approved machines: **CT**

	48 in.	62 in.	72 in.
Operating Weight	353 lb.	385 lb.	620 lb.
Overall Width	51.4 in.	64.4 in.	74.4 in.



SNOWBLOWER – LOADERS

Throw and blow snow to clear a path.

- Increased intake height and bigger auger draw in more snow
- The rounded intake provides a smoother surface to roll the snow into the feed impeller rather than pushing it, minimizing clogging and improving snow flow
- Aggressive auger teeth – painted orange for improved visibility – easily break up and tear through packed snow and ice chunks
- Direct-drive sprocket rotation improves the performance, durability and ease of maintenance of the snowblower chute
- A reversible and replaceable cutting edge bites into hard ice and packed snow, and is designed for long life
- Visibility slots to see the cutting edge
- Adjustable full-length skid shoes to enhance ground contact
- Available in standard, high-flow and super-flow configurations

Approved machines: **CTL** **MTL** **SAL** **SSL** **TC**

	SB26x36	SB26x48	SB26x56	SB32x60	SB32x68
Operating Weight	620 lb.	672 lb.	700 lb.	920 lb.	941 lb.
Intake Height	26.5 in.	26.5 in.	26.5 in.	33 in.	33 in.
Discharge Chute Angle	270°	270°	270°	270°	270°
Throw Distance	Up to 25 ft.	Up to 25 ft.	Up to 25 ft.	Up to 40 ft.	Up to 40 ft.
Flow Required	8-17 gpm	8-17 gpm	8-17 gpm	13-31 gpm	13-31 gpm

	SB32x74	SB32x80	SB32x86	SB36x86	SB36x96
Operating Weight	981 lb.	1016 lb.	1041 lb.	1396 lb.	1457 lb.
Intake Height	33 in.	33 in.	33 in.	37 in.	37 in.
Discharge Chute Angle	270°	270°	270°	270°	270°
Throw Distance	Up to 40 ft.	Up to 40 ft.	Up to 40 ft.	Up to 40 ft.	Up to 40 ft.
Flow Required	13-31 gpm	13-31 gpm	13-31 gpm	36-45 gpm	36-45 gpm



SNOW PUSHER

Achieve maximum snow removal speed and efficiency.

- Easily and efficiently clear big winter jobsites
- Cover larger areas without frequent stops
- Accomplish efficient snow removal on decorative or sensitive surfaces
- Moldboard flotation and oscillation keep snow pusher in contact with the ground without damaging equipment or property

Approved machines: **CTL** **CWL** **SSL** **TC** **TL**

	8 ft.	10 ft.
Operating Weight	1122 lb.	1256 lb.
Width	102 in.	128 in.
Skid Shoes	0.75 x 5 in. AR400	0.75 x 5 in. AR400
Vertical Float	2.3 in.	2.3 in.
Tilt	12°	12°
Oscillation	+/- 4.5°	+/- 4.5°



SNOW PUSHER PRO

Built for the efficiency of a commercial snow remover.

- This attachment is an angle snow blade and snow pusher all in one
- Compatible with the following compact loader models: S740, S770, S850, T595, T650, T740, T770, T870 and the T550
- Optional 200-pound loader counterweight sold separately

Approved machines: **CTL** **CWL** **SAL** **SSL** **TC** **TL**

	Pro – 6 ft.	Pro – 8 ft.	Pro – 9 ft.	Pro – 10 ft.
Operating Weight	1272 lb.	1473 lb.	1529 lb.	1589 lb.
Width	80 in.	104 in.	116 in.	120 in.
Skid Shoes	36 in. x 9.75 x 1.5 poly	36 in. x 9.75 x 1.5 poly	36 in. x 9.75 x 1.5 poly	36 in. x 9.75 x 1.5 poly
Vertical Float	0 in.	0 in.	0 in.	0 in.
Tilt	35°	35°	35°	35°
Oscillation	+/- 6.0°	+/- 6.0°	+/- 6.0°	+/- 6.0°



SOD LAYER

Create smooth, green landscapes.

- Make quick and easy work of laying fresh, green sod
- Carry and lay a roll of sod up to 4 feet wide
- Front-mounted maneuverability offers effective performance even on smaller jobsites

Approved machines: **CTL** **SSL** **TC**

Sod Layer	
Operating Weight	596 lb.
Width	73 in.
Sod Roll Widths	24-48 in.

LX = Large Excavator **SAL** = Small Articulated Loader **SSL** = Skid-Steer Loader **TC** = Toolcat Utility Work Machine **TL** = Telehandler **UTV** = Utility Vehicle

Scan the QR codes for additional specifications and metric conversions.

**SAS 200**

Operating Weight	1488 lb.
Length	64.7 in.
Width	79.1 in.

SOIL AND ASPHALT SPREADER

Spread soil, asphalt and other loose materials.

- Fill trenches, lay sub-base materials, and widen and repair roads or sidewalks
- Hydraulic side wings are easily adjusted for any spread path from 5 inches to 6 feet
- Adjustable blade leaves layer materials up to 4 inches above ground level
- Hydraulic offset can shift the material guide up to 6 feet to the operator's right
- Transverse tilt up to 5 degrees can compensate for slope
- Optional auxiliary control panel is available
- Optional fixed, side-wing kit is available for curb and gutter applications

Approved machines: **CTL** **SSL**

**SOIL CONDITIONER**

Lay a good foundation for growth.

- Rocks and other debris are windrowed to the edge of the jobsite for easy cleanup and removal
- Replaceable carbide-tipped teeth offer maximum ground penetration
- Oscillating bolster on 72- and 84-inch models
- Front bolster offers better grade control and adjusts to create more room for transportation or storage
- Standard and high-flow models available

Approved machines: **CTL** **MTL** **SAL** **SSL** **TC** **TL**

	Manual 48 in.	Manual/Hydraulic 72 in.	High Flow 72 in.	Hydraulic 84 in.	High Flow 84 in.
Operating Weight	636 lb.	1110 lb.	1110 lb.	1268 lb.	1268 lb.
Overall Width	60.6 in.	86.2 in.	86.2 in.	98.2 in.	98.2 in.
Degree of Angle (Right or Left)	25°	25°	25°	25°	25°
Width (Fully Angled)	46 in.	65 in.	65 in.	76 in.	76 in.
Number of Teeth	81	121	121	141	141
Flow Range	10-18 gpm	13-37 gpm	25-37 gpm	18-37 gpm	30-37 gpm

SPREADER – LOADERS

No matter the season, the spreader has it covered.

- Maintain surfaces during winter, or spread seed and fertilizer during spring and summer
- HS8 spreader offers three material flow gates that spread 18-28 feet

Approved machines: **CTL** **SSL** **TC**



HS8 Spreader	
Operating Weight	387 lb.
Hopper Capacity	9.6 cu. ft.
Spreading Pattern	18-28 ft.
Speed Control	Variable, Hydraulic
Motor	Hydraulic
Spinner Wheel	18 in. diameter

AT = Articulating Tractor **CT** = Compact Tractor **CTL** = Compact Track Loader **CWL** = Compact Wheel Loader **MTL** = Mini Track Loader **MX** = Excavator



SPREADER, BOX

Use with your UTV or Toolcat utility work machine.

- Optimized for efficient and cost-effective use of salt
- Also compatible with sand and salt mix, bagged rock salt, bulk salt, and dry free-flowing sand
- Accessories automatically integrate with the hopper control with no additional wiring
- Accessories include: spill guards, vibrator, LED work light, LED strobe light and tarp kit

Approved machines: **TC** **UTV**

	SP13 Sand and Salt Spreader	SP9 Sand and Salt Spreader
Operating Weight	212 lb.	192 lb.
Hopper Capacity	13.45 cu. ft.	9.45 cu. ft.
Spreading Pattern	n/a – 30 ft.	n/a – 30 ft.
Speed Control	Variable Speed Control Dial	Variable Speed Control Dial
Motor	12-Volt 1/2 hp	12-Volt 1/2 hp
Spinner Wheel	12 in. diameter	12 in. diameter
Compatible Carrier	Toolcat Utility Work Machines	Bobcat UTVs



STUMP GRINDER

Easily turn tree stumps into mulch.

- Operates off the carrier's auxiliary hydraulics, eliminating the need to maintain an engine while operating
- 90-degree angle mount offers increased visibility to the cutting area
- Rubber deflecting shields aid in wood chip retention
- Unique valve design reduces cutting wheel stalling while in the cut

Approved machines: **CTL** **MTL** **SAL** **SSL** **TC**

	SG 30	SG 60	SGX 60
Operating Weight	460 lb.	980 lb.	995 lb.
Number of Teeth	16	32	32
Flow Range	10-14 gpm	17-32 gpm	25-40 gpm
Max. Cutting Arc	90°	80°	80°
Grinder Reach at Ground Level	46.2 in.	74 in.	74 in.
Max. Cutting Depth	11 in.	15 in.	15 in.
Max. Cutting Height	11 in.	32 in.	32 in.
Tip Speed	3109-4691 ft./min.	4480-6330 ft./min.	3321-5511 ft./min.



SWEeper

Sweep, collect, and dump dirt and debris.

- Poly bristles sweep and deposit debris in the sweeper bucket
- Simply dump sweeper bucket when full; no need for multiple cleanup attachments
- Cut through materials with the replaceable and reversible bucket cutting edge
- Effectively operate in forward and reverse
- Carrier-mounted water kits and a self-contained, sweeper-mounted water kit available to aid in dust abatement

Approved machines: CTL MTL SAL SSL TC TL

	44 in.	54 in.	60 in.	72 in.	84 in.
Operating Weight	690 lb.	770 lb.	988 lb.	1104 lb.	1221 lb.
Overall Attachment Width	48.3 in.	58.3 in.	66.2 in.	78.2 in.	89.9 in.
Bucket Capacity	6.6 cu. ft.	8.2 cu. ft.	12 cu. ft.	14.4 cu. ft.	18.5 cu. ft.
Broom Diameter	24.0 in.	24.0 in.	26.0 in.	26.0 in.	26.0 in.
Broom RPM @ Hyd. Flow	185 @ 15 gpm	185 @ 15 gpm	215 @ 15 gpm	215 @ 15 gpm	215 @ 15 gpm
Flow Range	9.5-19 gpm	9.5-19 gpm	16-23 gpm	16-23 gpm	16-23 gpm



TILLER, 3-POINT – COMPACT TRACTOR

Easy and efficient soil preparation.

- Break ground, prepare soil for planting, amend soil or remove weeds between tree rows
- Forward or reverse rotation
- Adjustable skid shoes for various working depths up to 7 inches
- Available in 48-, 60- and 72-inch tilling widths

Approved machines: CT



TILLER – LOADERS

Tear through clumps and hardened materials.

- Bi-directional rotation allows top-cutting and under-cutting when operating in either direction
- Offset mounting enables tilling beside sidewalks, curbs and buildings, increasing jobsite capabilities
- Optional adjustable skid shoes deliver depth control at 2-, 4- or 6-inch depths
- Hardened, double-edge tines break through materials to loosen soil

Approved machines: CTL MTL SAL SSL TC TL

	40 in.	62 in.	76 in.
Operating Weight	475 lb.	660 lb.	749 lb.
Max. Working Depth	6 in.	6 in.	6 in.
Drive	Direct Drive	Direct Drive	Direct Drive
Number of Tines	24	36	44
Flow Range	9-18 gpm	17-40 gpm	17-40 gpm

AT = Articulating Tractor CT = Compact Tractor CTL = Compact Track Loader CWL = Compact Wheel Loader MTL = Mini Track Loader MX = Excavator



TILT-TATCH ACCESSORY

Get more work out of your Bobcat attachments.

- Dig drainage ditches, cut a level path on a hillside and more
- Connects as an interface between carrier and non-hydraulic attachments
- Controlled directly from operator's seat

Approved machines: **CTL** **SSL** **TC**

Tilt-Tatch	
Operating Weight	320 lb.
Oscillation	+/- 15°



TINE RAKE

Easily collects debris and levels soil.

- Can be angled or reversed
- High-carbon tines are individually replaceable for easy, low-cost maintenance
- Available in 60-, 72- and 84-inch widths

Approved machines: **CT**



TREE SPADE

Quickly and efficiently dig and transplant trees.

- Turn any loader into an efficient transplanting unit while cutting labor costs
- Adjustable legs allow digging in five different root-ball sizes with one tree spade
- Compact design offers operation in confined areas without damaging the landscape
- Open frame design provides excellent visibility to the base of the tree
- Cone blade configuration – 30 degree tower angle; popular when trees are removed, transported and placed in new location
- Modified blade configuration – 25 degree tower angle; allows tree spade to place the removed tree directly into a basket

Approved machines: **CTL** **SSL**

	32 in. Convertible Cone	32 in. Convertible Modified	36 in. Convertible Cone	36 in. Convertible Modified	44 in. Convertible Cone	44 in. Convertible Modified
Operating Weight	1590 lb.	1525 lb.	1640 lb.	1580 lb.	2150 lb.	2145 lb.
Length	83.3 in.	74.2 in.	87.5 in.	78.4 in.	85.1 in.	78.5 in.
Width	91.8 in.	76 in.	95.6 in.	79.8 in.	85.1 in.	77.7 in.
Height	64.2 in.	58.7 in.	64.2 in.	58.7 in.	64.2 in.	66.6 in.
Tree Diameter*	2-3.25 in.	2-3.25 in.	2-3.75 in.	2-3.75 in.	3-4.5 in.	3-4.5 in.
Max. Hydraulic Flow	25 gpm	25 gpm	25 gpm	25 gpm	25 gpm	25 gpm

*At 6 in. above base of tree

LX = Large Excavator **SAL** = Small Articulated Loader **SSL** = Skid-Steer Loader **TC** = Toolcat Utility Work Machine **TL** = Telehandler **UTV** = Utility Vehicle

Scan the QR codes for additional specifications and metric conversions.



TRENCH COMPACTOR

Done digging? Finish the job.

- Compress the soil for a neatly packed trench
- Large, wheel-type compactor compresses soil in the trench
- Vibratory shaker box offers optimum compaction in any soil type

Approved machines: **CTL** **SSL**

Trench Compactor	
Operating Weight	1400 lb.
Working Depth	27 in.
Working Width – Standard Pad	4.5-6.75 in.
Working Width – Wide Pad	8-10.25 in.
Wheel Diameter	46.5 in.
Dynamic Force	7000 lb.
Vibrations/Min.	2200 @ 18 gpm



TRENCHER

Cut a trench fast – even in demanding conditions.

- Large-diameter auger moves material from the trench's side and limits soil from falling back in
- Grease cylinder for quick and easy chain tensioning
- Side-shift versatility allows you to dig close to jobsite obstacles

Approved machines: **CTL** **MTL** **MX** **SAL** **SSL** **TC**

	MX112	LT112	LT113	LT213	LT313	LT414	LT405
Operating Weight	570 lb.	613 lb.	638 lb.	725 lb.	955-980 lb.	1181-1218 lb.	1520 lb.
Max. Operating Pressure	3000 psi	3000 psi	3000 psi	3300 psi	3300 psi	3300 psi	3300 psi
Flow Range	13-20 gpm	9-15 gpm	9-15 gpm	11-18 gpm	15-24 gpm	26-40 gpm	26-40 gpm
Dig Depth	24 in.	24 in.	36 in.	36 in.	36-48 in.	50-62 in.	48 in.
Widths Available	4-8 in.	4-8 in.	4-8 in.	4-8 in.	4-12 in.	4-12 in.	4-12 in.



TRUSS BOOM

Extend your reach for lifting and placing trusses.

- Precise fingertip controls allow an operator to place trusses exactly where they are needed for accurate jobsite performance
- Bob-Tach attachment mounting system makes hooking up and disconnecting attachments quick, easy and secure

Approved machines: **TL**

12 ft.	
Operating Weight	558 lb.
Length	146 in.
Width	47.5 in.
Height	19.3 in.



NEW PRODUCT



TURBINE BLOWER

Turn up the horsepower for a quick cleanup.

- High-velocity airflow of 114 mph provides efficient and effective debris removal
- 360 degrees of adjustable discharge direction for precise airflow control and targeted debris placement

Approved machines: **AT**



UTILITY FORK

Handle bundled material, loose straw, manure and other hard-to-grab materials.

- Utility fork teeth are replaceable
- For added versatility, pair with the utility grapple

Approved machines: **CT** **MTL** **SAL** **TC**

	36 in.	54 in.	60 in.	66 in.	72 in.	80 in.
Operating Weight	200 lb.	280 lb.	304 lb.	330 lb.	356 lb.	388 lb.
Number of Teeth Shipped	5	7	8	9	10	11
Max. Number of Teeth	9	13	15	17	19	19



VIBRATORY PLOW

Work below the surface with minimal ground disturbance.

- Designed exclusively for MTL and SAL loaders
- Ideal for installing pipe and cable with minimal ground disturbance
- Achieve a knife-like slit that almost disappears as the machine drives over the cut
- Coulter wheel cuts sod ahead of the plow blade while the pressure foot holds down sod and protects surrounding areas

Approved machines: **MTL** **SAL**

	VP12
Operating Weight	520 lb.
Plow Depth	6-18 in.
Max. Chute Blade Wire Diameter	0.5 in.
Max. Pull Blade Pipe Diameter	1.5 in.
Flow Range	10-14 gpm



VIBRATORY ROLLER

Achieve superior compacting action.

- Hard-pack the ground in forward and reverse
- Minimizes vibrations to reduce operator fatigue and achieve more comfortable working conditions
- Padded drum compacts heavy soil, clay and clay-based backfill
- Smooth drum compacts sand, pea rock, gravel and asphalt patching
- Free-drum oscillation keeps more of the drum in contact with uneven terrain

Approved machines: **CTL** **MTL** **SSL** **TL**

	48 in. Padded Drum	48 in. Smooth Drum	73 in. Padded Drum	73 in. Smooth Drum	80 in. Smooth Drum
Operating Weight	1778 lb.	1788 lb.	2189 lb.	2208 lb.	2320 lb.
Overall Width	60.5 in.	60.5 in.	79 in.	79 in.	86 in.
Covers Right Side Tires On	66 in. wide loaders	66 in. wide loaders	73 in. wide loaders	73 in. wide loaders	80 in. wide loaders
Drum Offset	9 in. to right	9 in. to right	Centered	Centered	Centered
Drum Oscillation	+/- 12°	+/- 12°	+/- 7.5°	+/- 7.5°	+/- 7.5°
Dynamic Force	10,519 lb. @ 17 gpm 14,244 lb. @ 20 gpm	10,519 lb. @ 17 gpm 14,244 lb. @ 20 gpm	9905 lb. @ 20 gpm 14,263 lb. @ 24 gpm	9905 lb. @ 20 gpm 14,263 lb. @ 24 gpm	9905 lb. @ 20 gpm 14,263 lb. @ 24 gpm
Frequency	2448 vpm @ 17 gpm 2879 vpm @ 20 gpm	2448 vpm @ 17 gpm 2879 vpm @ 20 gpm	2401 vpm @ 20 gpm 2882 vpm @ 24 gpm	2401 vpm @ 20 gpm 2882 vpm @ 24 gpm	2401 vpm @ 20 gpm 2882 vpm @ 24 gpm
Number of Pads	78	—	102	—	—



SEE IT IN ACTION.

WATER KIT

Dust abatement for dirt and debris.

- High-capacity tank volume minimizes refilling
- Control water pump operation with a switch inside the carrier cab
- Complements the angle broom, sweeper, planer and vibratory roller attachments
- 14-gallon tank capacity

Approved machines: **CTL** **SSL**

	Quick-Tach
Operating Weight	165 lb.
Operating Weight (Full)	474 lb.
Tank Capacity (Each Tank)	14 gal.
Max. Flow Rate per Nozzle	0.28 gpm
Max. Pump Capacity	1.1 gal./min.



WHEEL SAW

Deliver consistent, uniform cutting.

- Smoothly cut through asphalt, concrete, frozen ground, wire mesh and more
- Hydraulic depth adjustment gauge delivers a consistent, uniform cut depth
- Hydraulic side-shift shifts the attachment flush with any nearby object for a close cut

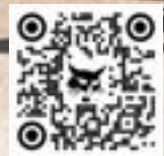
Approved machines: CTL SSL

	WS18	WS24
Operating Weight	2249 lb.	2723 lb.
Trenching Depth	6-18 in.	8-24 in.
Hydraulic Side-Shift	25.6 in.	25.6 in.
Flow Range	25-40 gpm	25-40 gpm



ATTACHMENT EXTENDED WARRANTY

Available on most Bobcat attachments. See your dealer for details.



LX = Large Excavator SAL = Small Articulated Loader SSL = Skid-Steer Loader TC = Toolcat Utility Work Machine TL = Telehandler UTV = Utility Vehicle

Scan the QR codes for additional specifications and metric conversions.

2024 BOBCAT EQUIPMENT SPECIFICATIONS

FOR MORE INFORMATION, SEE YOUR LOCAL BOBCAT DEALER OR GO TO [BOBCAT.COM](https://www.bobcat.com)

SKID-STEER LOADERS

Model	S70	S450	S510	S590	S62	S64	S66	S650	S76	S770	S86
Engine											
Engine Type	Diesel	Turbo Diesel	Turbo Diesel	Turbo Diesel	Turbo Diesel	Turbo Diesel	Turbo Diesel	Turbo Diesel	Turbo Diesel	Turbo Diesel	Turbo Diesel
Horsepower hp (kW)	23.5 (17.5)	49.0 (36.5)	55.0 (41.0)	68.0 (50.7)	68.0 (50.7)	68.0 (50.7)	74.0 (55.2)	74.0 (55.1)	74.0 (55.2)	92.0 (68.6)	105.0 (78.2)
Performance											
Rated Operating Capacity (50% of tipping load) lb. (kg)	760 (344)	1370 (621)	1876 (851)	2000 (907)	2100 (952)	2300 (1043)	2400 (1089)	2690 (1220)	2900 (1315)	3350 (1520)	3400 (1542)
Auxiliary Hydraulic Flow gpm (L/min.)	9.8 (37.1)	16.7 (63.2)	17.1 (64.7)	17.1 (64.7)	17.6 (66.6)	17.6 (66.6)	17.6 (66.6)	23.0 (87.0)	23.3 (88.2)	23.0 (87.1)	23.6 (89.3)
High-Flow Option gpm (L/min.)	—	—	—	—	26.9 (101.8)	26.9 (101.8)	26.9 (101.8)	—	30.3 (114.7)	36.6 (138.5)	36.6 (138.5)
Super-Flow Option gpm (L/min.)	—	—	—	—	—	—	—	—	—	—	42.0 (158.9)
Travel Speed mph (km/hr.)	6.3 (10.1)	7.6 (12.3)	7.6 (12.3)	7.0 (11.2)	7.4 (11.9)	7.4 (11.9)	7.4 (11.9)	7.1 (11.4)	6.8 (10.9)	7.1 (11.4)	6.7 (10.8)
Travel Speed (Two-Speed Option) mph (km/hr.)	—	9.2 (14.8)	11 (17.3)	11.4 (18.4)	11.0 (17.7)	11.0 (17.7)	11.0 (17.7)	12.3 (19.7)	11.8 (18.9)	12.3 (19.8)	12.0 (19.3)
Operating Weight lb. (kg)	2892 (1312)	5370 (2436)	6208 (2816)	6765 (3069)	6884 (3123)	6974 (3163)	7154 (3245)	8061 (3656)	8615 (3908)	9314 (4225)	9728 (4412)
Selectable Joystick Controls	—	Opt	Opt	Opt	Opt	Opt	Opt	Opt	Opt	Opt	Std
Dimensions											
Length With Bucket in. (mm)	97.3 (2472)	124.9 (3172)	133.0 (3378)	133.0 (3378)	134.9 (3426)	134.9 (3426)	134.9 (3426)	136.8 (3474)	147.1 (3737)	141.6 (3597)	153.5 (3899)
Width With Bucket in. (mm)	36.0 (914)	62.0 (1575)	68.0 (1727)	68.0 (1727)	68.0 (1727)	68.0 (1727)	68.0 (1727)	74.0 (1880)	74.0 (1880)	74.0 (1880)	74.0 (1880)
Height With Cab in. (mm)	71.4 (1814)	77.8 (1976)	77.8 (1976)	77.8 (1976)	80.5 (2045)	80.5 (2045)	80.5 (2045)	81.3 (2065)	81.8 (2078)	81.3 (2065)	83.1 (2110)
Height to Bucket Hinge Pin in. (mm)	94.5 (2400)	109.5 (2781)	114.5 (2908)	119.0 (3023)	114.5 (2908)	120.0 (3048)	120.0 (3048)	124.0 (3149)	128.3 (3259)	131.4 (3338)	132.0 (3352)
Reach at Max. Height in. (mm)	15.8 (401)	20.8 (528)	17.0 (432)	32.6 (828)	20.4 (518)	34.2 (869)	34.2 (869)	31.5 (800)	37.4 (950)	33.6 (853)	37.9 (964)
Ground Clearance at Center in. (mm)	5.5 (140)	8.4 (213)	7.3 (185)	7.3 (185)	7.5 (190)	7.5 (190)	7.5 (190)	8.1 (207)	8.8 (224)	8.1 (206)	8.8 (224)
Wheelbase in. (mm)	28.4 (721)	35.4 (899)	42.6 (1082)	42.6 (1082)	44.6 (1133)	44.6 (1133)	44.6 (1133)	45.3 (1150)	48.3 (1227)	48.3 (1227)	51.3 (1304)

S76



T76

COMPACT TRACK LOADERS

Model	T450	T550	T595	T62	T64	T66	T650	T76	T770	T86
Engine										
Engine Type	Turbo Diesel	Turbo Diesel	Turbo Diesel	Turbo Diesel	Turbo Diesel	Turbo Diesel	Turbo Diesel	Turbo Diesel	Turbo Diesel	Turbo Diesel
Horsepower hp (kW)	55.0 (41.0)	68.0 (50.7)	70.0 (52.2)	68.0 (50.7)	68.0 (50.7)	74.0 (55.2)	74.0 (55.1)	74.0 (55.2)	92.0 (68.6)	105.0 (78.2)
Performance										
Rated Operating Capacity (35% of tipping load) lb. (kg)	1490 (676)	1995 (905)	2200 (998)	2150 (975)	2300 (1043)	2450 (1111)	2570 (1165)	2900 (1315)	3475 (1576)	3800 (1723)
Rated Operating Capacity (50% of tipping load) lb. (kg)	2120 (962)	2850 (1293)	3142 (1425)	3071 (1393)	3286 (1491)	3500 (1588)	3670 (1664)	4143 (1879)	4960 (2250)	5429 (2462)
Auxiliary Hydraulic Flow gpm (L/min.)	16.7 (63.2)	17.1 (64.7)	17.1 (64.7)	17.6 (66.6)	17.6 (66.6)	17.6 (66.6)	23.0 (87.0)	23.3 (88.2)	23.0 (87.1)	23.6 (89.3)
High-Flow Option gpm (L/min.)	—	—	—	26.9 (101.8)	26.9 (101.8)	26.9 (101.8)	—	30.3 (114.7)	36.6 (138.5)	36.6 (138.5)
Super-Flow Option gpm (L/min.)	—	—	—	—	—	—	—	—	—	42.0 (158.9)
Travel Speed mph (km/hr.)	6.9 (11.2)	7.1 (11.4)	7.1 (11.4)	6.4 (10.3)	6.4 (10.3)	6.4 (10.3)	6.2 (9.9)	6.8 (10.9)	6.6 (10.6)	5.4 (8.7)
Travel Speed (Two-Speed Option) mph (km/hr.)	—	—	10.4 (16.7)	9.3 (15.0)	9.3 (15.0)	9.3 (15.0)	10.0 (16.0)	9.2 (14.8)	10.7 (17.2)	10.4 (16.7)
Operating Weight lb. (kg)	6424 (2914)	7557 (3428)	8022 (3638)	8612 (3906)	8727 (3958)	8927 (4049)	9113 (4133)	10,250 (4649)	10,515 (4770)	12,393 (5621)
Ground Pressure (standard tracks) psi (bar)	4.8 (0.33)	4.9 (0.34)	5.1 (0.35)	5.6 (0.38)	5.7 (0.39)	5.9 (0.40)	5.7 (0.39)	6.2 (0.42)	4.2 (0.29)	4.8 (0.33)
Ground Pressure (optional tracks) psi (bar)	—	4.0 (0.27)	4.1 (0.28)	4.7 (0.32)	4.7 (0.32)	4.8 (0.33)	4.1 (0.28)	4.6 (0.31)	—	—
Selectable Joystick Controls	Opt	Opt	Opt	Opt	Opt	Opt	Opt	Std	Opt	Std
Roller Suspension™ System	—	—	—	—	—	—	—	—	Opt	—
5-Link Torsion Suspension Undercarriage	—	—	—	—	—	Opt	—	Opt	—	Opt
Dimensions										
Length With Bucket in. (mm)	126.6 (3215)	133.0 (3378)	133.0 (3378)	134.9 (3426)	134.9 (3426)	134.9 (3426)	136.8 (3474)	147.1 (3737)	141.6 (3597)	153.5 (3899)
Width With Bucket in. (mm)	56.0 (1422)	68.0 (1727)	68.0 (1727)	68.0 (1727)	68.0 (1727)	68.0 (1727)	74.0 (1880)	74.0 (1880)	80.0 (2032)	80.0 (2032)
Height With Cab in. (mm)	77.8 (1976)	77.8 (1976)	77.8 (1976)	80.5 (2045)	80.5 (2045)	80.5 (2045)	81.3 (2065)	81.8 (2078)	81.3 (2065)	83.1 (2110)
Height to Bucket Hinge Pin in. (mm)	109.5 (2781)	114.5 (2908)	119.0 (3023)	114.5 (2908)	120.0 (3048)	120.0 (3048)	124.0 (3149)	128.3 (3259)	131.4 (3338)	132.0 (3352)
Reach at Max. Height in. (mm)	23.5 (597)	18.4 (467)	34.9 (887)	23.0 (584)	36.7 (932)	36.7 (932)	36.0 (914)	39.9 (1013)	35.2 (894)	38.4 (976)
Ground Clearance at Center in. (mm)	8.4 (213)	7.4 (188)	7.4 (188)	7.5 (190)	7.5 (190)	7.5 (190)	7.3 (185)	8.8 (224)	9.4 (239)	8.8 (224)
Length of Track on Ground in. (mm)	50.2 (1275)	54.1 (1374)	54.1 (1374)	54.3 (1379)	54.3 (1379)	54.3 (1379)	57.7 (1466)	59.2 (1504)	63.7 (1618)	66.3 (1683)

Certain specification(s) are based on engineering calculations and are not actual measurements. Specification(s) are provided for comparison purposes only and are subject to change without notice. Specification(s) for your individual equipment will vary based on normal variations in design, manufacturing, operating conditions and other factors.

EXCAVATORS

Model	E10	E20	E26	E32	E35	E38	E40 ^{NEW}	E48	E55	E60	E88	E145	E165
Tail Swing													
Tail Swing	Zero	Zero	Minimal	Con.	Zero	Zero	Minimal	Con.	Minimal	Con.	Con.	Reduced	Con.
Engine													
Engine Type	Diesel	Diesel	Diesel	Diesel	Diesel	Turbo Diesel	Turbo Diesel	Turbo Diesel	Turbo Diesel	Turbo Diesel	Turbo Diesel	Turbo Diesel	Turbo Diesel
Horsepower hp (kW)	10.2 (7.6)	15.0 (11.2)	24.8 (18.5)	24.8 (18.5)	24.8 (18.5)	33.2 (24.7)	40.4 (30.2)	42.6 (31.4)	49.7 (36.5)	55.7 (41.6)	65.4 (48.7)	115.0 (85.8)	131.0 (97.9)
Performance													
Operating Weight lb. (kg)	2593 (1176)	4306 (1953)	6489 (2942)	7403 (3358)	7659 (3474)	7893 (3580)	9180 (4164)	9830 (4459)	11,357 (5151)	12,315 (5586)	19,600 (8891)	34,946 (15,851)	38,376 (17,407)
Max. Dig Depth in. (mm)	71.7 (1820)	101.0 (2565)	114.4 (2906)	121.2 (3077)	121.2 (3077)	121.2 (3077)	130.4 (3312)	124.5 (3163)	136.9 (3478)	156.7 (3981)	182.0 (4622)	235.2 (6000)	239.5 (6085)
Max. Reach at Ground Level in. (mm)	121.8 (3093)	167.9 (4264)	191.9 (4876)	194.5 (4940)	204.3 (5190)	204.3 (5190)	215.2 (5465)	207.1 (5261)	231.9 (5889)	246.3 (6256)	282.5 (7176)	334.8 (8500)	346.0 (8790)
Max. Dump Height in. (mm)	71.6 (1818)	109.1 (2772)	128.8 (3272)	137.2 (3484)	137.2 (3484)	137.2 (3484)	146.8 (3729)	150.6 (3826)	156.5 (3975)	171.1 (4347)	198.0 (5029)	278.4 (7100)	255.0 (6477)
Rated Lift Capacity lb. (kg)	965 (438)	1098 (498)	2359 (1070)	2975 (1349)	3318 (1505)	3318 (1505)	3939 (1787)	4921 (2232)	6746 (3060)	6411 (2908)	10,020 (4545)	18,400 (8350)	16,390 (7430)
Arm Digging Force lbf. (N)	1248 (5550)	2086 (9279)	3547 (15,780)	4690 (20,861)	4690 (20,861)	4690 (20,861)	4074 (18,120)	5820 (25,889)	6987 (31,078)	6446 (28,674)	8620 (38,342)	13,228 (58,841)	18,077 (80,410)
Bucket Digging Force lbf. (N)	1865 (8294)	4684 (20,835)	5652 (25,140)	7284 (32,402)	7284 (32,402)	7284 (32,402)	7284 (32,402)	9601 (42,707)	9511 (42,307)	10,261 (45,642)	15,130 (67,300)	24,504 (108,999)	25,794 (114,737)
Travel Speed (high) mph (km/hr.)	1.7 (2.8)	2.6 (4.2)	3.2 (5.2)	2.9 (4.7)	2.9 (4.7)	2.9 (4.7)	3.2 (5.1)	3.3 (5.2)	2.8 (4.5)	2.8 (4.5)	2.7 (4.4)	2.9 (4.7)	3.1 (5.0)
Ground Pressure (rubber) psi (bar)	4.2 (0.29)	4.4 (0.30)	4.1 (0.28)	4.7 (0.33)	4.6 (0.32)	4.7 (0.33)	4.3 (0.29)	4.7 (0.33)	4.2 (0.29)	4.6 (0.32)	5.7 (0.39)	5.6 (0.38)*	6.3 (0.40)*
Auxiliary Hydraulic Flow gpm (L/min.)	5.3 (20.0)	7.9 (30.0)	14.2 (53.8)	16.9 (63.9)	16.9 (63.9)	16.9 (63.9)	16.9 (63.9)	20.0 (75.7)	20.0 (75.7)	20.0 (75.7)	25.1 (95.0)	30.0 (113.5)	80.4 (304.3)
Angle Blade	–	–	–	–	Opt	Opt	Opt	Opt	Opt	Opt	Opt	–	–
Dimensions													
Length at Travel Position in. (mm)	110.0 (2793)	144.4 (3669)	170.4 (4327)	183.7 (4665)	190.0 (4826)	190.0 (4826)	192.3 (4884)	200.5 (5092)	208.7 (5300)	218.3 (5545)	249.6 (6341)	315.0 (8001)	324.8 (8250)
Width in. (mm)	28.0-43.0 (710-1100)	38.6-53.5 (980-1360)	61.0 (1550)	61.8 (1569)	69.7 (1769)	69.7 (1769)	72.8 (1850)	72.8 (1850)	77.2 (1960)	77.2 (1960)	86.6 (2200)	102.0 (2591)	102.0 (2590)
Height in. (mm)	87.0 (2209)	90.4 (2297)	96.0 (2438)	96.2 (2443)	96.2 (2443)	96.2 (2443)	98.7 (2507)	99.1 (2518)	100.2 (2544)	100.1 (2543)	100.0 (2540)	123.0 (3124)	120.5 (3060)
Long-Arm Options													
Long Arm	Std	Std	Std	Opt	Opt	Opt	Std	Opt	Opt	Std	Std	Std	–
Operating Weight lb. (kg)	2593 (1176)	4306 (1953)	6489 (2942)	8269 (3752)	8362 (3794)	8596 (3900)	9180 (4164)	10,425 (4729)	11,876 (5386)	12,315 (5586)	19,600 (8891)	34,946 (15,851)	–
Max. Dig Depth in. (mm)	71.7 (1820)	101.0 (2565)	114.4 (2906)	133.0 (3377)	133.0 (3377)	133.0 (3377)	130.4 (3312)	136.3 (3463)	152.7 (3878)	156.7 (3981)	182.0 (4622)	235.2 (6000)	–
Max. Reach at Ground Level in. (mm)	121.8 (3093)	167.9 (4264)	191.9 (4876)	205.9 (5230)	215.8 (5480)	215.8 (5480)	215.2 (5465)	218.5 (5550)	247.2 (6278)	246.3 (6256)	282.5 (7176)	334.8 (8500)	–
Max. Dump Height in. (mm)	71.6 (1818)	109.1 (2772)	128.8 (3272)	144.3 (3665)	144.3 (3665)	144.3 (3665)	146.8 (3729)	157.8 (4008)	166.5 (4230)	171.1 (4347)	198.0 (5029)	278.4 (7100)	–
Rated Lift Capacity lb. (kg)	965 (438)	1098 (498)	2359 (1070)	2871 (1302)	3206 (1454)	3206 (1454)	3939 (1787)	4797 (2176)	6534 (2964)	6411 (2908)	10,200 (4545)	18,400 (8350)	–
Extendable-Arm Options													
Operating Weight lb. (kg)	–	–	–	8497 (3855)	8590 (3897)	8824 (4003)	–	10,666 (4838)	–	12,646 (5736)	–	–	–
Max. Dig Depth in. (mm)	–	–	–	153.2 (3892)	153.2 (3892)	153.2 (3892)	–	148.4 (3769)	–	177.0 (4496)	–	–	–
Max. Reach at Ground Level in. (mm)	–	–	–	225.3 (5722)	235.1 (5972)	235.1 (5972)	–	229.6 (5831)	–	265.5 (6743)	–	–	–
Max. Dump Height in. (mm)	–	–	–	154.5 (3925)	154.5 (3925)	154.5 (3925)	–	164.0 (4166)	–	182.8 (4643)	–	–	–
Rated Lift Capacity lb. (kg)	–	–	–	2733 (1240)	3058 (1387)	3058 (1387)	–	4638 (2104)	–	6345 (2878)	–	–	–

*Ground pressure for E145 and E165 is listed with 600 mm steel tracks.

COMPACT WHEEL LOADERS

Model	L65	L85	L95 ^{NEW}
Engine			
Engine Type	Turbo Diesel	Turbo Diesel	Turbo Diesel
Horsepower hp (kW)	55.0 (41.0)	68.0 (50.7)	74.4 (55.5)
Performance			
Rated Operating Capacity Straight Bucket lb. (kg)	3133 (1421)	3974 (1802)	3981 (1806)
Rated Operating Capacity Pallet Fork lb. (kg)	3759 (1705)	4786 (2171)	4860 (2205)
Rated Operating Capacity Articulated Bucket lb. (kg)	2618 (1187)	3257 (1478)	3335 (1513)
Rated Operating Capacity Articulated Pallet Forks lb. (kg)	3172 (1439)	3977 (1804)	4127 (1872)
Auxiliary Hydraulic Flow gpm (L/min.)	19.9 (75.4)	19.9 (75.4)	19.9 (75.4)
Auxiliary High Flow gpm (L/min.)	—	27.3 (103.5)	27.3 (103.5)
Travel Speed mph (km/hr.)	15.1 (24.3)	16.3 (26.3)	24.2 (39.1)
Operating Weight lb. (kg)	9944 (4510)	11,164 (5064)	11,768 (5338)
Power Bob-Tach Attachment Mounting System	Std	Std	Std
Dimensions			
Length With Bucket in. (mm)	217.9 (5536)	220.0 (5589)	219.2 (5570)
Length With Pallet Fork in. (mm)	245.1 (6226)	244.4 (6208)	243.6 (6188)
Width Without Attachment in. (mm)	69.6 (1770)	70.9 (1800)	70.9 (1800)
Height With Cab in. (mm)	97.3 (2472)	98.3 (2498)	99.3 (2522)
Wheelbase in. (mm)	82.7 (2100)	82.7 (2100)	82.7 (2100)
Height to Hinge Pin in. (mm)	126.9 (3225)	127.9 (3250)	128.9 (3275)
Reach Fully Raised in. (mm)	29.9 (761)	30.8 (782)	29.8 (757)

SMALL ARTICULATED LOADERS

Model	L23	L28
Engine		
Engine Type	Diesel	Diesel
Horsepower hp (kW)	24.8 (18.5)	24.8 (18.5)
Performance		
Rated Operating Capacity Straight lb. (kg)	1395 (633)	1534 (696)
Rated Operating Capacity Articulated lb. (kg)	1159 (525)	1222 (554)
Auxiliary Hydraulic Flow gpm (L/min.)	12.1 (45.8)	12.1 (45.8)
Travel Speed mph (km/hr.)	8.2 (13.2)	8.3 (13.4)
Operating Weight lb. (kg)	3790 (1719)	4195 (1903)
Bob-Tach Attachment Mounting System	Std	Std
Dimensions		
Length With Bucket in. (mm)	122.4 (3109)	122.4 (3109)
Width in. (mm)	43.2 (1097)	46.5 (1181)
Height With Cab in. (mm)	78.1 (1983)	78.1 (1983)
Wheelbase in. (mm)	47.2 (1199)	47.2 (1199)
Height to Bucket Hinge Pin in. (mm)	85.4 (2169)	(Extended) 104.3 (2650)



L28



E38



L85

TELEHANDLERS

Model	TL519	TL619	TL723	TL923
Engine				
Engine Type	Turbo Diesel	Turbo Diesel	Turbo Diesel	Turbo Diesel
Horsepower hp (kW)	74.0 (54.6)	74.0 (55.3)	100.0 (74.5)	135.0 (100.7)
Displacement cu. in. (L)	146.0 (2.4)	208.0 (3.4)	207.5 (3.4)	207.5 (3.4)
Performance				
Operating Weight lb. (kg)	9936 (4507)	10,428 (4730)	16,471 (7470)	18,158 (8235)
Max. Rated Capacity lb. (kg)	5512 (2500)	5512 (2500)	7718 (3500)	9041 (4100)
Max. Rated Capacity at Full Height lb. (kg)	3968 (1800)	5512 (2500)	7718 (3500)	7056 (3200)
Max. Rated Capacity at Full Reach lb. (kg)	1807 (820)	2205 (1000)	3308 (1500)	3749 (1700)
Lift Height in. (mm)	232.7 (5910)	230.0 (5842)	273.9 (6957)	277.2 (7041)
Max. Reach in. (mm)	134.3 (3410)	123.3 (3132)	161.5 (4102)	162.3 (4122)
Max. Travel Speed (low) mph (km/hr.)	4.3 (6.9)	4.7 (7.5)	3.7 (6.0)	3.7 (6.0)
Max. Travel Speed (high) mph (km/hr.)	17.0 (27.3)	18.3 (29.5)	18.7 (30.0)	24.8 (40.0)
Auxiliary Hydraulic Flow gpm (L/min.)	21.1 (80.0)	21.1 (80.0)	26.4 (100.0)	39.6 (150.0)
Dimensions				
Length Fork Face to Rear in. (mm)	157.0 (3989)	175.3 (4453)	191.7 (4869)	195.9 (4975)
Width in. (mm)	72.1 (1832)	82.7 (2100)	90.6 (2300)	90.6 (2300)
Cab Height in. (mm)	76.0 (1930)	84.3 (2140)	96.7 (2457)	96.7 (2457)
Ground Clearance in. (mm)	9.8 (250)	10.4 (264)	16.9 (430)	16.9 (430)
Wheelbase in. (mm)	92.9 (2360)	111.0 (2820)	113.0 (2870)	113.0 (2870)



TL519



UW56

TOOLCAT UTILITY WORK MACHINES

Model	UW53	UW56
Engine		
Engine Type	Diesel	Diesel
Horsepower hp (kW)	61.0 (45.5)	61.0 (45.5)
Performance		
Operating Weight lb. (kg)	5710 (2590)	5680 (2576)
Machine Rated Capacity lb. (kg)*	2200 (998)	2200 (998)
Total Vehicle Rated Capacity lb. (kg) **	4200 (1905)	4200 (1905)
Towing Capacity lb. (kg)	4000 (1814)	4000 (1814)
Travel Speed (low) mph (km/hr.)	8.0 (12.9)	8.0 (12.9)
Travel Speed (high) mph (km/hr.)	16.5 (26.5)	16.5 (26.5)
Travel Speed (reverse) mph (km/hr.)	8.0 (12.9)	8.0 (12.9)
Dimensions		
Length With Bucket in. (mm)	181.0 (4597)	172.1 (4372)
Width Without Bucket in. (mm)	60.0 (1524)	60.0 (1524)
Cab Height in. (mm)	81.0 (2057)	81.0 (2057)
Turning Radius (AWS) in. (mm)	134.6 (3419)	134.6 (3419)
Attachment Systems		
Rated Operating Capacity (ISO) lb. (kg)	1500 (680)	1500 (680)
Lift Height (pivot pin) in. (mm)	83.3 (2116)	83.3 (2116)
Auxiliary Hydraulic Flow gpm (L/min.)	18.8 (71.0)	18.8 (71.0)
High-Flow Option gpm (L/min.)	27.9 (105.0)	27.9 (105.0)
Capacities (cargo box and machine)		
Cargo Box Volume cu. ft. (m³)	—	18 (0.5)
Cargo Box Dimensions (L x W x H) in. (mm)	—	56.0 x 51.0 x 10.0 (1422 x 1295 x 254)
Box Height (from ground) in. (mm)	—	38.2 (970)
Cargo Box Max. Load lb. (kg)	—	2000 (907)
3-Point Hitch		
3-Point Hitch Capacity lb. (kg)	1775 (806)	—
PTO Horsepower hp (kW)	25.0 (18.6)	—
Storage Bin Capacity (each) lb. (kg)	50 (22)	—

*Machine rated capacity: combined weight of load on lift arm, cargo box load, operator and passenger.

**Total vehicle rated capacity: combined weight of load on lift arm, cargo box load, operator, passenger and tow weight if equipped with a hitch.



RP22.40

FP15.50

R60P

TR75

LIGHT COMPACTION EQUIPMENT

REVERSIBLE PLATES	RP22.40	RP30.50	RP49.20D
Dimensions			
Machine Weight lb. (kg)	220 (100)	439 (199)	1049 (476)
Base Plate Length in. (mm)	10.0 (254)	13.0 (330)	17.7 (450)
Machine Length With Handle in. (mm)	44.9 (1140)	44.9 (1140)	58.5 (1485)
Machine Height in. (mm)	24.6 (625)	30.1 (765)	32.2 (817)
Handle Height (work) in. (mm)	39.4 (1000)	39.4 (1000)	39.4 (1000)
Machine Width in. (mm)	15.7 (400)	19.7 (500)	17.7 (450)
Engine			
Make & Model	Honda GX 160	Honda GX 270	Hatz 1B50 E
Fuel	Gas	Gas	Diesel
Engine Output @3600 rpm hp (kW)	4.8 (3.6)	8.0 (6.0)	8.8 (6.6)
Fuel Consumption gal./hr. (L/hr.)	0.36 (1.4)	0.55 (2.1)	0.40 (1.6)
Compaction Forces			
Max. Vibration Frequency	98 Hz	90 Hz	65 Hz
Max. Centrifugal Force lbf. (kN)	5171 (23)	7194 (32)	11,016 (49)
Surface Capacity ft. ² /hr. (m ² /hr.)	5683 (528.0)	8396 (780.0)	16,953 (1575.0)
Surface Pressure psi (bar)	32.8 (2.26)	28.1 (1.93)	35.1 (2.42)

FORWARD PLATES	FP10.33	FP15.40	FP15.50
Dimensions			
Machine Weight lb. (kg)	119 (54)	176 (80)	185 (84)
Machine Weight With Sprinkler & Optional Wheels lb. (kg)	119 (54)	196 (89)	205 (93)
Machine Length With Handle in. (mm)	44.5 (1130)	40.2 (1020)	40.2 (1020)
Base Plate Length in. (mm)	19.5 (495)	22.0 (559)	22.0 (559)
Ground Contact Length in. (mm)	13.4 (341)	13.9 (352)	13.9 (352)
Machine Height in. (mm)	20.0 (507)	26.3 (667)	26.3 (667)
Handle Height (work) in. (mm)	36.7 (932)	38.4 (976)	38.4 (976)
Machine Width in. (mm)	13.0 (330)	15.7 (400)	19.7 (500)
Engine			
Make & Model	Honda GX 120	Honda GX 120	Honda GX 120
Fuel Type	Gas	Gas	Gas
Fuel Consumption gal./hr. (L/hr.)	0.26 (1.0)	0.26 (1.0)	0.26 (1.0)
Engine Output @3600 rpm hp (kW)	3.5 (2.6)	3.5 (2.6)	3.5 (2.6)
Compaction Forces			
Max. Vibration Frequency	100 Hz	100 Hz	100 Hz
Max. Centrifugal Force lbf. (kN)	2360 (10.5)	3372 (15)	3372 (15)
Surface Capacity ft. ² /hr. (m ² /hr.)	4689 (435.6)	6975 (648)	7750 (720)
Surface Pressure psi (bar)	13.5 (0.93)	15.5 (1.06)	12.4 (0.85)

TRENCH ROLLERS	TR75
Dimensions	
Wheelbase in. (mm)	39.4 (1000)
Drum Width in. (mm)	25.2 / 33.5 (640 / 850)
Machine Length With Bumper in. (mm)	87.7 (2227)
Drum Diameter in. (mm)	20.7 (525)
Machine Weight With Accessories lb. (kg)	3197 (1450)
Oscillation Angle	± 7°
Inside Turning Radius in. (mm)	56.7 (1440)
Engine	
Make & Model	Yanmar 3TNV80F
Fuel Type	Diesel
Engine Output hp (kW)	20.0 (14.6)
Max. Torque	68.4 Nm @ 1800 rpm
Drive System	Hydrostatic
No. of Cylinders (water cooling)	3
Engine Complies With Emission Regulations	EPA Tier 4 Final
Compaction Forces	
Max. Vibration Frequency	40 Hz
Amplitude	(1.1 / 0.6 mm)
Max. Centrifugal Force lbf. (kN)	16,860 / 8093 (75 / 36)

RAMMERS	R60P	R68P
Dimensions		
Machine Weight lb. (kg)	137 (62)	150 (68)
Foot Length in. (mm)	13.4 (340)	13.4 (340)
Foot Width in. (mm)	11.0 (280)	11.0 (280)
Handle Length in. (mm)	28.0 (710)	28.0 (710)
Machine Height in. (mm)	40.2 (1020)	40.2 (1020)
Handle Width in. (mm)	14.0 (355)	14.0 (355)
Engine		
Make & Model	Honda GXR 120	Honda GXR 120
Fuel	Gas	Gas
Engine Output @4300 rpm hp (kW)	3.6 (2.7)	3.6 (2.7)
Fuel Consumption gal./hr. (L/hr.)	0.26 (1.0)	0.26 (1.0)
Compaction Forces		
Percussion Rate	11.3 Hz	11.3 Hz
Stroke Height in. (mm)	2.6 (65)	2.6 (65)
Centrifugal Force lbf. (kN)	2585 (11.5)	2923 (13.0)
Surface Capacity ft. ² /hr. (m ² /hr.)	2441 (226.8)	2441 (226.8)
Max. Compaction Performance* in. (mm)	17.7 (450)	19.7 (500)

*Depending on ground conditions

ELECTRIC EQUIPMENT

COMPACT TRACK LOADER T7X	
Performance	
Rated Operating Capacity (35% of tipping load) lb. (kg)	2900 (1315)
Tipping Load lb. (kg)	8429 (3823)
Lift Arm Path	Vertical
Operating Weight lb. (kg)	11,970 (5430)
Breakout Force – Lift lb. (kg)	7500 (3401)
Breakout Force – Lift Machine Limitation (hyd/tip)	Tip
Breakout Force – Tilt lb. (kg)	8108 (3678)
Travel Speed mph (km/hr.)	5.0 (8.9)
Travel Speed (Two-Speed) mph (km/hr.)	7.8 (12.6)
Ground Pressure (standard tracks) psi (bar)	5.2 (0.36)
Power	
Battery Type	Lithium Ion
System Voltage VDC	465
Peak Power hp (kW)	~107.0 (80.0)
Motor Type	Permanent Magnet (Brushless)
Emissions	
CO2 Emissions	None
Sounds & Vibration	
Bystander Noise Level per ISO 6396/ISO 4871 dB	92.7
Operator Position Noise Level per ISO 6396/ISO 4871 dB	65.4
Fluid Capacities	
Cooling Fluids gal. (qt)	1.7 (6.4)
Drive Motor Brake Cavity (each) Fluids gal. (qt)	0.2 (1.0)
Air Conditioning Refrigerant (R-134a) Fluids lb. (kg)	1.6 (0.7)

MOWER ZT6000e ^{NEW}	
Power	
Battery Type	Lithium Ion
System Voltage V	58
Gross Battery Capacity kWh	20.4
Estimated Run Time hr.	4-6+*
Power System	
Deck Motors kW	(3) 3x
Wheel Drive Motors kW	(3) 2x
Drive Description	HD Planetary Gearbox, Integrated Parking Brake
Forward Speed mph (km/hr.)	10.9 (17.5)
Reverse Speed mph (km/hr.)	4.1 (6.5)
Deck	
Mower Deck	AirFX Cutting System
Available Widths** in.	52, 61
Cutting Height in. (mm)	1.0-5.5 (25-139)
Blade Tip Speed fpm	18,500
Discharge Chute	Flexible Molded Polymer
Frame	
Front and Rear	1.5- x 2.5-inch Steel Tubing; Welded Steel Reinforced Frame
Machine Length in. (mm)	83.2 (2114)
Machine Weight lb. (kg)	1449 (657)
Wheels	
Rear	24 x 10.5-12
Front	15 x 6-6
Operator Platform	
Seat	High Back, Full Mechanical Suspension Seat
Fore-Aft Adjust	Seat Slide Lever
Warranty	
Machine	3-year/2,000-hour
Charging	
On-Board 120V hr.	12.6
On-Board 240V hr.	6.3

*Times will vary depending on conditions.
 **All other specifications are shown for largest available deck width.

EXCAVATOR E10e E19e		
Power		
Battery Type	Lithium Ion	Lithium Ion
System Voltage VDC	51.8	51.8
Gross Battery Capacity kWh	11.5	17.3
Motor Type	Asynchronous	Asynchronous
Motor Power hp (kW)	10.5 (7.5)	13.4 (10.0)
Estimated Continuous Runtime hr.	4	4
Performance		
Operating Weight lb. (kg)	2648 (1201)	4225 (1916)
Ground Pressure psi (kPa)	4.18 (28.8)	4.77 (32.9)
Digging Force, Arm lbf. (N)	1248 (5550)	2086 (9279)
Digging Force, Bucket lbf. (N)	1865 (8294)	4584 (20,835)
Drawbar Pull lbf. (N)	2227 (9905)	5299 (23,550)
Travel Speed (low) mph (km/hr.)	1.1 (1.8)	1.0 (1.7)
Travel Speed (high) mph (km/hr.)	1.8 (2.9)	2.2 (3.6)
Hydraulic System		
Pump Type	Triple Gear Pump	Triple Gear Pump
Pump Capacity gpm (L/min.)	6.6 (25.0)	9.2 (35.1)
Auxiliary Flow gpm (L/min.)	5.2 (20.0)	6.4 (24.3)
Auxiliary Relief psi (bar)	2766 (191)	2610 (180)
Swing System		
Boom Swing (left)	67°	80°
Boom Swing (right)	64°	60°
Swing Speed rpm	10.2	7.9
Charging		
On-Board 110V hr.	10-12	10-12
On-Board 240V hr.	10-12	10-12
Off-Board 240V hr.	1-2	1-2
Standard On-Board Charging Cable	NEMA 5-15	NEMA 5-15



T7X

MINI TRACK LOADERS

Model	MT100
Engine	
Engine Type	Diesel
Horsepower hp (kW)	24.8 (18.5)
Displacement cu. in. (L)	55.0 (0.9)
Performance	
Rated Operating Capacity lb. (kg)	1000 (453)
Auxiliary Hydraulic Flow gpm (L/min.)	12.0 (45.4)
Travel Speed mph (km/hr.)	4.1 (6.6)
Operating Weight With Bucket lb. (kg)	3390 (1537)
Ground Pressure With Narrow Rubber Tracks psi (bar)	5.2 (0.36)
Dimensions	
Length With Bucket in. (mm)	106.2 (2697)
Width With Bucket in. (mm)	36.0 (914)
Height in. (mm)	54.6 (1387)
Height to Bucket Hinge Pin in. (mm)	81.0 (2056)
Reach at Max. Height in. (mm)	18.7 (472)
Ground Clearance in. (mm)	8.1 (205)
Length of Track on Ground in. (mm)	41.4 (1052)

*Counterweights located in the undercarriage.



MT100



UV34XL

UTILITY VEHICLES

Model	UV34 Gas	UV34XL Gas	UV34 Diesel	UV34XL Diesel
Engine				
Horsepower hp (kW)	39.9 (29.7)	39.9 (29.7)	24.5 (18.2)	24.5 (18.2)
Displacement cu. in. (cc)	61.0 (999)	61.0 (999)	55.0 (899)	55.0 (899)
Performance				
Total Vehicle Rated Capacity lb. (kg)**	1900 (862)	2075 (941)	1900 (862)	2075 (941)
Towing Capacity lb. (kg)	2500 (1134)	2500 (1134)	2500 (1134)	2500 (1134)
Cargo Box Load Capacity lb. (kg)	1250 (567)	1250 (567)	1250 (567)	1250 (567)
Travel Speed (high)* mph (km/hr.)	35.0 (56.3)	35.0 (56.3)	35.0 (56.3)	35.0 (56.3)
Turn Radius in. (mm)	110.0 (2794)	154.0 (3911)	110.0 (2794)	154.0 (3911)
Dimensions				
Length in. (mm)	123.0 (3124)	155.0 (3937)	123.0 (3124)	155.0 (3937)
Width in. (mm)	62.0 (1575)	62.0 (1575)	62.0 (1575)	62.0 (1575)
Height in. (mm)	76.0 (1930)	76.0 (1930)	76.0 (1930)	76.0 (1930)
Cargo Box Height in. (mm)	11.5 (292)	11.5 (292)	11.5 (292)	11.5 (292)
Cargo Box Width in. (mm)	54.0 (1372)	54.0 (1372)	54.0 (1372)	54.0 (1372)
Ground Clearance in. (mm)	11.7 (296)	11.7 (296)	11.7 (296)	11.7 (296)
Wheelbase in. (mm)	85.0 (2159)	117.0 (2972)	85.0 (2159)	117.0 (2972)
Operating Weight lb. (kg)	1855 (841)	2085 (945)	1935 (878)	2165 (982)

*Change the top speed of any gas vehicle in increments of 5 mph from 15 mph through 35 mph. 40 mph speed kit available through aftermarket parts. Diesel vehicles can be limited to 25 mph or 15 mph with a speed-limiting kit.

**Total vehicle rated capacity: combined weight of cargo box load, operator, passenger and tow weight if equipped with hitch.



UV34

COMPACT TRACTORS

Model	CT1021 HST	CT1025 HST	CT2025 HST	CT2035 HST	CT2535 HST	CT2040 HST	CT2540 HST	CT4045 HST	CT4050 HST	CT4055 SST	CT4058 HST	CT 5545 E-HST	CT5550 E-HST	CT5555 E-HST	CT5558 E-HST
Engine															
Engine Type	Diesel	Diesel	Diesel	Diesel	Diesel	Diesel	Diesel	Diesel	Diesel	Diesel	Diesel	Diesel	Diesel	Diesel	Diesel
Horsepower hp (kW)	21.0 (15.7)	24.5 (18.3)	24.5 (18.2)	34.9 (26.0)	34.9 (26.0)	39.6 (29.5)	37.6 (28.0)	44.9 (33.5)	50.3 (37.3)	50.3 (37.3)	57.7 (43.0)	45.0 (33.5)	50.0 (37.5)	55.0 (41.0)	57.7 (43.0)
Displacement cu. in. (L)	61.4 (1.0)	61.4 (1.0)	100 (1.6)	111.4 (1.8)	111.4 (1.8)	111.4 (1.8)	111.4 (1.8)	111.4 (1.8)	111.4 (1.8)	111.4 (1.8)	111.4 (1.8)	111.4 (1.8)	111.4 (1.8)	111.4 (1.8)	111.4 (1.8)
Fuel Tank gal. (L)	6.7 (25.5)	6.7 (25.5)	9.0 (34.1)	9.0 (34.1)	9.0 (34.1)	9.0 (34.1)	9.0 (34.1)	12.7 (48.0)	12.7 (48.0)	11.9 (45.0)	12.7 (48.0)	14.8 (56.0)	14.8 (56.0)	14.8 (56.0)	14.8 (56.0)
Performance															
PTO Horsepower hp (kW)	16.3 (12.1)	18.8 (14.0)	21.8 (16.3)	29.4 (21.9)	29.4 (21.9)	31.9 (23.8)	31.9 (23.8)	32.8 (24.5)	39.3 (29.3)	49.6 (37.0)	45.1 (33.7)	33.9 (25.3)	38.9 (29.0)	43.1 (32.1)	48.3 (36.0)
Travel Speed (forward) mph (km/hr.)	11.1 (17.8)	11.1 (17.8)	9.7 (15.6)	14.4 (23.1)	14.4 (23.1)	14.4 (23.1)	14.4 (23.1)	18.5 (29.7)	18.5 (29.7)	17.5 (28.2)	18.5 (29.7)	17.5 (28.2)	17.5 (28.2)	17.5 (28.2)	17.5 (28.2)
3-Point Lift Capacity lb. (kg)	700 (318)	700 (318)	1631 (740)	1631 (740)	1631 (740)	1631 (740)	1631 (740)	2716 (1232)	2716 (1232)	2716 (1232)	2716 (1232)	3177 (1441)	3177 (1441)	3177 (1441)	3177 (1441)
Rear PTO rpm	540	540	540	540	540	540	540	540	540	540	540	540	540	540	540
Rear PTO System	Indep.	Indep.	Live	Live	Indep.	Live	Indep.	Indep.	Indep.	Indep.	Indep.	Indep.	Indep.	Indep.	Indep.
Enclosed Cab With Heat/AC	—	—	—	—	Std	—	Std	—	—	—	—	Std	Std	Std	Std
Drive System (transmission type)															
Infinite, 2-Range Hydrostatic	Std	Std	—	—	—	—	—	—	—	—	—	—	—	—	—
Infinite, 3-Range Hydrostatic	—	—	Std	Std	Std	Std	Std	Std	Std	—	Std	Std	Std	Std	Std
Synchro (8x8)	—	—	—	—	—	—	—	Opt	Opt	Std	—	—	—	—	—
Manual (9x3)	—	—	Opt	Opt	—	Opt	—	—	—	—	—	—	—	—	—
Dimensions															
Overall Length (with 3-point) in. (mm)	99.3 (2522)	99.3 (2522)	120.9 (3070)	120.9 (3070)	120.9 (3070)	120.9 (3070)	120.9 (3070)	125.5 (3189)	125.5 (3189)	125.5 (3189)	125.5 (3189)	139.6 (3547)	139.6 (3547)	139.6 (3547)	139.6 (3547)
Overall Width (with industrial tires) in. (mm)	46.0 (1161)	46.0 (1161)	63.4 (1610)	63.4 (1610)	63.0 (1600)	63.4 (1610)	63.0 (1600)	69.8 (1722)	69.8 (1722)	69.8 (1722)	69.8 (1722)	74.2 (1885)	74.2 (1885)	74.2 (1885)	74.2 (1885)
Overall Height in. (mm)	87.6 (2225)	87.6 (2225)	91.5 (2324)	91.5 (2324)	91.0 (2311)	91.5 (2324)	91.0 (2311)	97.4 (2473)	97.4 (2473)	97.4 (2473)	97.4 (2473)	94.2 (2393)	94.2 (2393)	94.2 (2393)	94.2 (2393)
Inside Turning Radius in. (mm)	100.0 (2540)	100.0 (2540)	96.5 (2450)	96.5 (2450)	106.2 (2700)	96.5 (2450)	106.2 (2700)	103.5 (2630)	103.5 (2630)	103.5 (2630)	103.5 (2630)	117.6 (2990)	117.6 (2990)	117.6 (2990)	117.6 (2990)
Wheelbase in. (mm)	55.1 (1400)	55.1 (1400)	65.7 (1670)	65.7 (1670)	65.7 (1670)	65.7 (1670)	65.7 (1670)	71.2 (1810)	71.2 (1810)	71.2 (1810)	71.2 (1810)	75.6 (1920)	75.6 (1920)	75.6 (1920)	75.6 (1920)
Ground Clearance in. (mm)	6.3 (160)	6.3 (160)	11.5 (292)	11.5 (292)	12.3 (311)	11.5 (292)	12.3 (311)	15.3 (387)	15.3 (387)	15.3 (387)	15.3 (387)	13.0 (330)	13.0 (330)	13.0 (330)	13.0 (330)
Weight lb. (kg)	1521 (690)	1521 (690)	2634 (1195)	3005 (1363)	3585 (1626)	3005 (1363)	3585 (1626)	3745 (1698)	3745 (1698)	3745 (1698)	3745 (1698)	4685 (2125)	4685 (2125)	4685 (2125)	4685 (2125)

Additional models are available in the 2000 and 4000 platforms. Visit Bobcat.com for details.



CT2025



CT5558

MOWERS

Model	ZT2000	ZT3000	ZT3500	WB700	ZS4000	ZT5000 ^{NEW}	ZT6000	ZT6100	ZT7000
Engine									
Engine Type	Kaw FR691V	Kaw FT730V	Kaw FX730V	Kaw FS600	Kaw FT730V EFI	Kaw FX730	Kaw FX801V	Kaw FX850V EFI	Kaw FX1000V EFI
Displacement cu. in. (cc)	44.3 (726)	44.3 (726)	44.3 (726)	36.8 (603)	44.3 (726)	44.3 (726)	52.0 (852)	52.0 (852)	61.0 (999)
Fuel Tank gal. (L)	3.8 (14.3)	3.8 (14.3)	7.8 (29.5)	5.0 (18.9)	6.5 (24.6)	7.8 (29.5)	15.0 (56.7)	15.0 (56.7)	15.0 (56.7)
Deck									
Mower Deck	TufDeck Cutting System	TufDeck Pro Cutting System	TufDeck Pro Cutting System	TufDeck Cutting System	AirFX Cutting System	AirFX Cutting System	AirFX Cutting System	AirFX Cutting System	AirFX Cutting System
Available Widths* in.	42, 48, 52	48, 52, 61	48, 52, 61	36, 48, 52	36, 48, 52, 61	52, 61	52, 61	61	61, 72
Cutting Height in. (mm)	1.5-4.8 (38-121)	1.5-4.8 (38-121)	1.5-4.8 (38-121)	1.5-4.5 (38-114)	1.5-4.5 (38-114)	1.5-4.8 (38-121)	1.0-5.5 (25-139)	1.0-5.5 (25-139)	1.0-5.5 (25-139)
Clutch ft.-lb. (N)	105 (556)	125 (556)	125 (556)	105 (467)	200 (889)	125 (556)	225 (1000)	225 (1000)	250 (1112)
Blade Tip Speed fpm @ 3550 Engine rpm	18,142	18,809	18,809	18,645	18,500	18,809	18,500	18,500	18,152
Frame									
Machine Length in. (mm)	76.0 (1930)	76.0 (1930)	79.0 (2006)	78.0 (1981)	64.0 (1625)	81.7 (2076)	83.0 (2108)	83.0 (2108)	87.0 (2209)
Machine Weight (wet) lb. (kg)	752 (341)	817 (370)	832 (377)	690 (312)	1028 (466)	1043 (473)	1421 (644)	1464 (664)	1541 (698)
Transmission									
Type – HG Hydrostatic Transaxles	ZT-2800	ZT-3100	ZT-3400	ZT-2800 With Charge Pumps	ZT-3400	ZT-3800	ZT-4400	ZT-4400	ZT-5400 2-Speed
Oil Capacity gal. (qt)	1.0 (4.0)	1.0 (4.0)	1.0 (4.0)	1.0 (4.0)	1.0 (4.0)	1.0 (4.0)	1.1 (4.5)	1.1 (4.5)	1.4 (5.9)
Forward Speed mph (km/hr.)	7.0 (11.2)	8.0 (12.8)	10.0 (16.0)	6.5 (10.5)	10.5 (16.8)	11.0 (17.7)	12.0 (19.3)	12.0 (19.3)	19.0 (30.5)**
Reverse Speed mph (km/hr.)	3.0 (4.8)	3.5 (5.6)	3.5 (5.6)	3.0 (4.8)	3.5 (5.6)	3.5 (5.6)	4.0 (6.4)	4.0 (6.4)	7.5 (12.0)***
Wheels									
Rear	20 x 10-10	22 x 11-10	23 x 10.5-12	20 x 8	23 x 10.5-12	24 x 10.5-12	24 x 10.5-12	24 x 12-12	26 x 12-12
Front	11 x 6-5	13 x 6.5-6	13 x 6.5-6	11 x 6 Semi-pneumatic	13 x 6.5-6	13 x 6.5-6	13 x 6.5-6	13 x 6.5-6	15 x 6.5-6 Semi-Pneumatic
Operator Platform									
Seat	High Back, Spring Suspension Seat	High Back, EVC and Spring Suspension Seat	High Back, Full Mechanical Suspension Seat	Optional Ride-On Platform	Wide Anti-Vibration and Flip-Up Operator Platform	High Back, Full Mechanical Suspension Seat	High Back, Full Mechanical Suspension Seat	High Back, Full Mechanical Suspension Seat	Extra-High Back, Full Mechanical Suspension Seat
Fore-Aft Adjust	Seat Slide Lever	Seat Slide Lever	Seat Slide Lever	–	Pad Removable for Service	Seat Slide Lever	Seat Slide Lever	Seat Slide Lever	Seat Slide Lever
Warranty									
	3-year/500-hour	3-year/1,000-hour	3-year/1,000-hour	3-year/2,000-hour	3-year/2,000-hour	3-year/2,000-hour	3-year/2,000-hour	3-year/2,000-hour	3-year/2,000-hour

*All other specifications are shown for largest available deck width for each platform. Visit Bobcat.com for full specs on all mower models.

**0-13.0 mph cutting, 13.0-19.0 mph transport

***5.0-7.5 mph transport





BOBCATALOG
6845 WINNETKA CIR
BROOKLYN PARK, MN 55428



Certain specification(s) are based on engineering calculations and are not actual measurements. Specification(s) are provided for comparison purposes only and are subject to change without notice. Specification(s) for your individual Bobcat equipment will vary based on normal variations in design, manufacturing, operating conditions, and other factors.

Bobcat Company is a member of the Doosan Group. Doosan is a global leader in construction, grounds maintenance and material handling equipment, power and water solutions, and engineering that has proudly served customers and communities for more than a century. Bobcat®, the Bobcat logo and the colors of the Bobcat machine are registered trademarks of Bobcat Company in the United States and various other countries. ©2023 Bobcat Company. All rights reserved.

BC-2024 (11/23)
EP-357M-1123-6537-F